



## XRCC1 (Phospho-Thr284) rabbit pAb

<b>Catalog No</b>	YP-Ab-10515
<b>Isotype</b>	IgG
<b>Reactivity</b>	Human; Mouse;Rat
<b>Applications</b>	WB
<b>Gene Name</b>	XRCC1
<b>Protein Name</b>	XRCC1 (Phospho-Thr284)
<b>Immunogen</b>	Synthesized peptide derived from human XRCC1 (Phospho-Thr284)
<b>Specificity</b>	This antibody detects endogenous levels of XRCC1 (Phospho-Thr284) at Human, Mouse,Rat
<b>Formulation</b>	Liquid in PBS containing 50% glycerol, and 0.171% sodium azide.
<b>Source</b>	Polyclonal, Rabbit,IgG
<b>Purification</b>	The antibody was affinity-purified from rabbit serum by affinity-chromatography using specific immunogen.
<b>Dilution</b>	WB 1:500-2000
<b>Concentration</b>	1 mg/ml
<b>Purity</b>	≥90%
<b>Storage Stability</b>	-20°C/1 year
<b>Synonyms</b>	DNA repair protein XRCC1 (X-ray repair cross-complementing protein 1)
<b>Observed Band</b>	70kD
<b>Cell Pathway</b>	Nucleus . Moves from the nucleoli to the global nuclear chromatin upon DNA damage. .
<b>Tissue Specificity</b>	Expressed in fibroblasts, retinal pigmented epithelial cells and lymphoblastoid cells (at protein level).
<b>Function</b>	function:Corrects defective DNA strand-break repair and sister chromatid exchange following treatment with ionizing radiation and alkylating agents.,polymorphism:Carriers of the polymorphic Gln-399 allele may be at greater risk for tobacco- and age-related DNA damage.,PTM:Phosphorylation of Ser-371 causes dimer dissociation. Phosphorylation by CK2 promotes interaction with APTX and APLF.,PTM:Sumoylated.,similarity:Contains 2 BRCT domains.,subcellular location:Accumulates at sites of DNA damage.,subunit:Homodimer. Interacts with polynucleotide kinase (PNK), DNA polymerase-beta (POLB) and DNA ligase III (LIG3). Interacts with APTX and APLF.,
<b>Background</b>	The protein encoded by this gene is involved in the efficient repair of DNA single-strand breaks formed by exposure to ionizing radiation and alkylating agents. This protein interacts with DNA ligase III, polymerase beta and poly (ADP-ribose) polymerase to participate in the base excision repair pathway. It may play a role in DNA processing during meogenesis and recombination in germ



cells. A rare microsatellite polymorphism in this gene is associated with cancer in patients of varying radiosensitivity. [provided by RefSeq, Jul 2008],

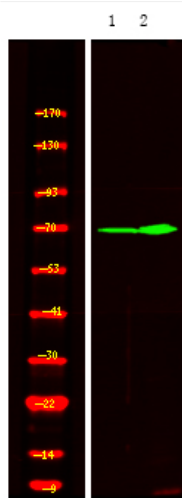
**matters needing attention**

Avoid repeated freezing and thawing!

**Usage suggestions**

This product can be used in immunological reaction related experiments. For more information, please consult technical personnel.

**Products Images**



Western Blot analysis of 1 HeLa cell, 2 LPS 100ng/mL 30min treated ,using primary antibody at 1:1000 dilution. Secondary antibody(catalog#:RS23920) was diluted at 1:10000