



## IGF2-BP2 Rabbit mAb

<b>Catalog No</b>	YP-rAb-16904
<b>Isotype</b>	IgG
<b>Reactivity</b>	Human,Mouse,Rat
<b>Applications</b>	WB,IHC,IF,ELISA
<b>Gene Name</b>	IGF2BP2
<b>Protein Name</b>	Insulin-like growth factor 2 mRNA-binding protein 2
<b>Purification Process</b>	Protein A
<b>Specificity</b>	Endogenous
<b>Formulation</b>	PBS, 50% glycerol, 0.05% Proclin 300, 0.05%BSA
<b>Source</b>	Monoclonal, Rabbit,IgG
<b>Dilution</b>	IHC 1:200-1:1000; WB 1:2000-1:10000; IF 1:200-1:1000; ELISA 1:5000-1:20000; Note: For IHC, we suggest antigen retrieval with TE buffer pH 9.0
<b>Concentration</b>	0.5 mg/ml
<b>Purity</b>	≥90%
<b>Storage Stability</b>	-15 ° C to -25 ° C/1 year(Do not lower than -25 ° C)
<b>Synonyms</b>	IGF2-BP2;Insulin-like growth factor 2 mRNA-binding protein 2;IGF2BP2 ; IMP2 ; VICKZ2 ; Insulin-like growth factor 2 mRNA-binding protein 2 ; IGF2 mRNA-binding protein 2 ; IMP-2 ; Hepatocellular carcinoma autoantigen p62 ; IGF-II mRNA-binding protein 2 ; VICKZ family member 2;IGF2BP2
<b>Observed Band</b>	66kD
<b>Calculated Molecular Weight</b>	66kD
<b>Cell Pathway</b>	Nucleus. Cytoplasm. Cytoplasm, P-body . Cytoplasm, Stress granule . Localized in cytoplasmic mRNP granules containing untranslated mRNAs. Localizes at the connecting piece and the tail of the spermatozoa. In response to cellular stress, such as oxidative stress, recruited to stress granules.
<b>Tissue Specificity</b>	Expressed in oocytes, granulosa cells of small and growing follicles, Leydig cells, spermatogonia and semen (at protein level). Expressed in testicular cancer (at protein level). Expressed weakly in heart, placenta, skeletal muscle, bone marrow, colon, kidney, salivary glands, testis and pancreas. Detected in fetal liver, fetal ovary, gonocytes and interstitial cells of the testis.
<b>Function</b>	Disease:Autoantibodies against IGF2BP2 are detected in sera from some patients with hepatocellular carcinoma.,Function:Binds to the 5'-UTR of the insulin-like growth factor 2 (IGF2) mRNAs. Binding is isoform-specific. May regulate translation of target mRNAs.,similarity:Belongs to the RRM IMP/VICKZ family.,similarity:Contains 2 RRM (RNA recognition motif)



## 杭州臻优品生物科技有限公司

### 热销产品:

蛋白、一抗、抗体对、ELISA试剂盒、生化试剂盒  
CCK8试剂盒、QPCR检测试剂盒

### 检测服务:

ELISA检测及定制服务 | 生化检测 | PCR、QPCR检测 | WB检测  
ICO-IP检测 | 切片 | 染色 | 免疫组化 | 免疫荧光 | 透射电镜全套  
| 宏基因组、转录组、基因组、蛋白组、代谢组测序



关注官网



关注客服



domains.,similarity:Contains 4 KH domains.,subcellular location:Localizes at the connecting piece and the tail of the spermatozoa.,subunit:Interacts with HNRPD.,tissue specificity:Expressed in oocytes, granulosa cells of small and growing follicles, Leydig cells, spermatogonia and semen (at protein level). Expressed in testicular cancer (at protein level). Expressed weakly in heart, placenta, skeletal muscle, bone marrow, colon, kidney, salivary glands, testis and pancreas. Detected in fetal liver, fetal ovary, gonocytes and interstitial cells of the testis.,

### Background

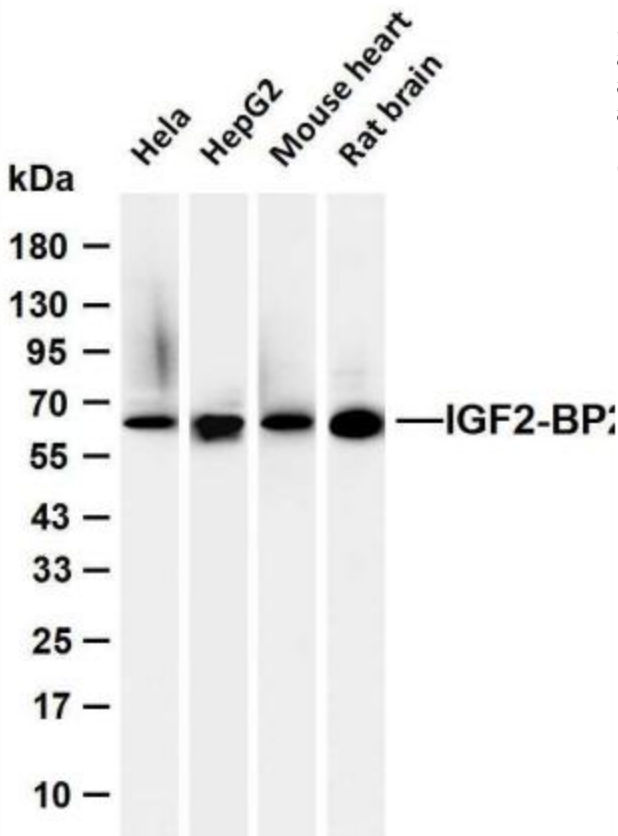
This gene encodes a protein that binds the 5' UTR of insulin-like growth factor 2 (IGF2) mRNA and regulates its translation. It plays an important role in metabolism and variation in this gene is associated with susceptibility to diabetes. Alternative splicing and promoter usage results in multiple transcript variants. Related pseudogenes are found on several chromosomes. [provided by RefSeq, Sep 2016],

### matters needing attention

Avoid repeated freezing and thawing!

### Usage suggestions

This product can be used in immunological reaction related experiments. For more information, please consult technical personnel.



Various whole cell lysates were separated by 4-20% SDS-PAGE, and the membrane was blotted with anti-IGF2-BP2 antibody. The HRP-conjugated Goat anti-Rabbit IgG (H + L) antibody was used to detect the antibody. Lane 1: HeLa Lane 2: HepG2 Lane 3: Mouse heart Lane 4: Rat brain Predicted band size: 66kDa Observed band size: 66kDa

