



M-CSF Rabbit mAb

Catalog No	YP-rAb-16892
Isotype	IgG
Reactivity	Human,Mouse,Rat
Applications	WB,IHC,IF,ELISA
Gene Name	CSF1
Protein Name	Macrophage colony-stimulating factor 1
Purification Process	Protein A
Specificity	Endogenous
Formulation	PBS, 50% glycerol, 0.05% Proclin 300, 0.05%BSA
Source	Monoclonal, Rabbit,IgG
Dilution	IHC 1:200-1:1000; WB 1:2000-1:10000; IF 1:200-1:1000; ELISA 1:5000-1:20000; Note: For IHC, we suggest antigen retrieval with TE buffer pH 9.0
Concentration	0.5 mg/ml
Purity	≥90%
Storage Stability	-15° C to -25° C/1 year(Do not lower than -25° C)
Synonyms	M-CSF;Macrophage colony-stimulating factor 1;CSF1 ; Macrophage colony-stimulating factor 1 ; CSF-1 ; M-CSF ; MCSF ; Lanimostim;CSF1
Observed Band	44kD
Calculated Molecular Weight	60kD
Cell Pathway	Cell membrane ; Single-pass type I membrane protein .; [Processed macrophage colony-stimulating factor 1]: Secreted, extracellular space.
Tissue Specificity	Endometrium,Kidney,Pancreatic carcinoma,T lymphoblast,Trophoblast,Urine,
Function	Granulocyte/macrophage colony-stimulating factors are cytokines that act in hematopoiesis by controlling the production, differentiation, and function of 2 related white cell populations of the blood, the granulocytes and the monocytes-macrophages. CSF-1 induces cells of the monocyte/macrophage lineage. It plays a role in immunological defenses, bone metabolism, lipoproteins clearance, fertility and pregnancy.,PTM:Glycosylation and proteolytic cleavage yield different soluble forms. A high molecular weight soluble form is a proteoglycan containing chondroitin sulfate.,PTM:Isoform 1 is N- and O-glycosylated. Isoform 3 is N-glycosylated.,subunit:Homodimer or heterodimer; disulfide-linked.,





Background

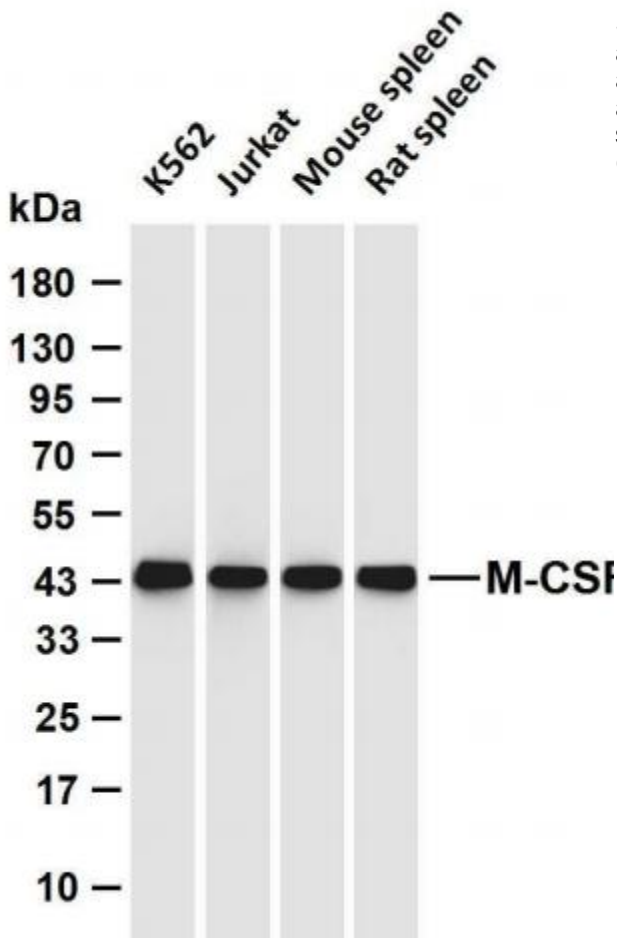
The protein encoded by this gene is a cytokine that controls the production, differentiation, and function of macrophages. The active form of the protein is found extracellularly as a disulfide-linked homodimer, and is thought to be produced by proteolytic cleavage of membrane-bound precursors. The encoded protein may be involved in development of the placenta. Alternate splicing results in multiple transcript variants. [provided by RefSeq, Sep 2011],

matters needing attention

Avoid repeated freezing and thawing!

Usage suggestions

This product can be used in immunological reaction related experiments. For more information, please consult technical personnel.



Various whole cell lysates were separated by 4-20% SDS-PAGE, and the membrane was blotted with anti-M-CSF antibody. The HRP-conjugated Goat anti-Rabbit IgG (H + L) antibody was used to detect the antibody. Lane 1: K562 Lane 2: Jurkat Lane 3: Mouse spleen Lane 4: Rat spleen Predicted band size: 60kDa Observed band size: 44kDa

