



## AF-10 Rabbit mAb

<b>Catalog No</b>	YP-rAb-16890
<b>Isotype</b>	IgG
<b>Reactivity</b>	Human,Mouse,Rat
<b>Applications</b>	WB,IHC,IF,ELISA
<b>Gene Name</b>	MLLT10
<b>Protein Name</b>	Protein AF-10
<b>Purification Process</b>	Protein A
<b>Specificity</b>	Endogenous
<b>Formulation</b>	PBS, 50% glycerol, 0.05% Proclin 300, 0.05%BSA
<b>Source</b>	Monoclonal, Rabbit,IgG
<b>Dilution</b>	IHC 1:200-1:1000; WB 1:2000-1:10000; IF 1:200-1:1000; ELISA 1:5000-1:20000; Note: For IHC, we suggest antigen retrieval with TE buffer pH 9.0
<b>Concentration</b>	0.5 mg/ml
<b>Purity</b>	≥90%
<b>Storage Stability</b>	-15 ° C to -25 ° C/1 year(Do not lower than -25 ° C)
<b>Synonyms</b>	AF-10;Protein AF-10;MLLT10 ; AF10 ; Protein AF-10 ; ALL1-fused gene from chromosome 10 protein;MLLT10
<b>Observed Band</b>	130kD
<b>Calculated Molecular Weight</b>	113kD
<b>Cell Pathway</b>	Nucleus .
<b>Tissue Specificity</b>	Expressed abundantly in testis.
<b>Function</b>	Disease:A chromosomal aberration involving MLLT10 is associated with acute leukemias. Translocation t(10;11)(p12;q23) with MLL/HRX. The result is a rogue activator protein.,Disease:A chromosomal aberration involving MLLT10 is associated with diffuse histiocytic lymphomas. Translocation t(10;11)(p13;q14) with PICALM.,PTM:Phosphorylated upon DNA damage, probably by ATM or ATR.,similarity:Contains 2 PHD-type zinc fingers.,tissue specificity:Expressed abundantly in testis.,
<b>Background</b>	myeloid/lymphoid or mixed-lineage leukemia; translocated to, 10(MLLT10) Homo sapiens This gene encodes a transcription factor and has been identified as a partner gene involved in several chromosomal rearrangements resulting in various leukemias. Multiple transcript variants encoding different isoforms have been found for this gene. [provided by RefSeq, Sep 2010],

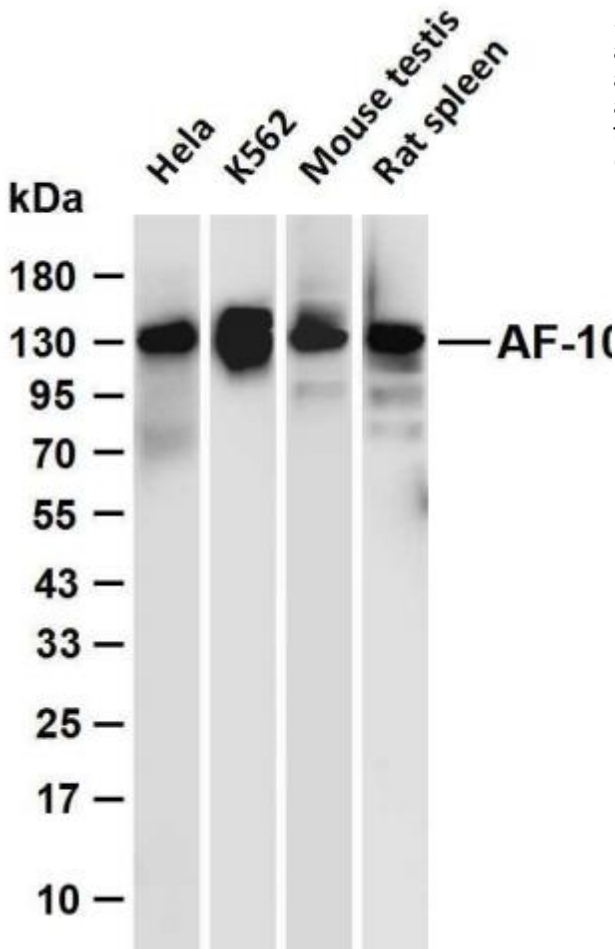


**matters needing attention**

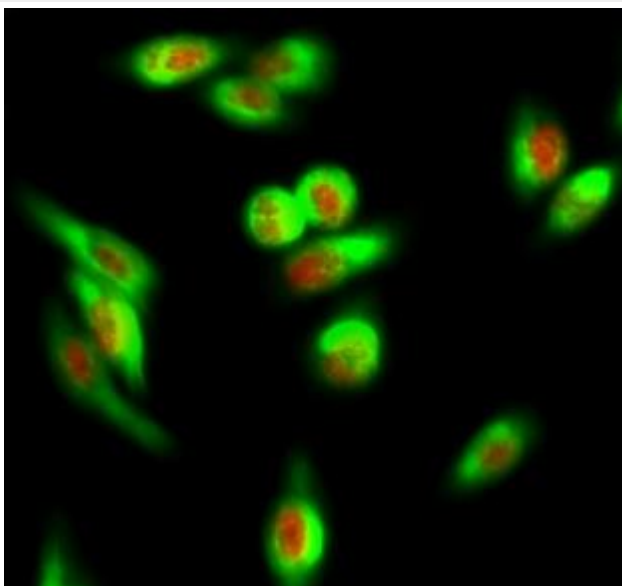
Avoid repeated freezing and thawing!

**Usage suggestions**

This product can be used in immunological reaction related experiments. For more information, please consult technical personnel.



Various whole cell lysates were separated by 4-20% SDS-PAGE, and the membrane was blotted with anti-AF-10 antibody. The HRP-conjugated Goat anti-Rabbit IgG (H + L) antibody was used to detect the antibody. Lane 1: HeLa Lane 2: K562 Lane 3: Mouse testis Lane 4: Rat spleen Predicted band size: 113kDa Observed band size: 130kDa



Immunofluorescence analysis of HeLa cell. 1, AF-10 Antibody (red) was diluted at 1:200 (4 ° overnight). COX IV Monoclonal Antibody (6C8) (green) was diluted at 1:200 (4 ° overnight). 2, Goat Anti Rabbit Alexa Fluor 594 Catalog:

杭州臻优品生物科技有限公司

热销产品:

蛋白、一抗、抗体对、ELISA试剂盒、生化试剂盒  
CCK8试剂盒、QPCR检测试剂盒

检测服务:

ELISA检测及定制服务 | 生化检测 | PCR、QPCR检测 | WB检测  
ICO-IP检测 | 切片 | 染色 | 免疫组化 | 免疫荧光 | 透射电镜全套  
| 宏基因组、转录组、基因组、蛋白质组、代谢组测序



关注官网



关注客服



## 杭州臻优品生物科技有限公司

### 热销产品:

蛋白、一抗、抗体对、ELISA试剂盒、生化试剂盒  
CCK8试剂盒、QPCR检测试剂盒

### 检测服务:

ELISA检测及定制服务 | 生化检测 | PCR、QPCR检测 | WB检测  
ICO-IP检测 | 切片 | 染色 | 免疫组化 | 免疫荧光 | 透射电镜全套  
| 宏基因组、转录组、基因组、蛋白组、代谢组测序



关注官网



关注客服