



## BTF Rabbit mAb

<b>Catalog No</b>	YP-rAb-16885
<b>Isotype</b>	IgG
<b>Reactivity</b>	Human,Mouse,Rat
<b>Applications</b>	WB,IHC,IF,ELISA
<b>Gene Name</b>	BCLAF1 BTF KIAA0164
<b>Protein Name</b>	Bcl-2-associated transcription factor 1
<b>Purification Process</b>	Protein A
<b>Specificity</b>	Endogenous
<b>Formulation</b>	PBS, 50% glycerol, 0.05% Proclin 300, 0.05%BSA
<b>Source</b>	Monoclonal, Rabbit,IgG
<b>Dilution</b>	IHC 1:200-1:1000; WB 1:2000-1:10000; IF 1:200-1:1000; ELISA 1:5000-1:20000; Note: For IHC, we suggest antigen retrieval with TE buffer pH 9.0
<b>Concentration</b>	0.5 mg/ml
<b>Purity</b>	≥90%
<b>Storage Stability</b>	-15 ° C to -25 ° C/1 year(Do not lower than -25 ° C)
<b>Synonyms</b>	BTF;Bcl-2-associated transcription factor 1;BCLAF1 ; BTF ; KIAA0164 ; Bcl-2-associated transcription factor 1 ; Btf;BCLAF1 BTF KIAA0164
<b>Observed Band</b>	150kD
<b>Calculated Molecular Weight</b>	106kD
<b>Cell Pathway</b>	Cytoplasm. Nucleus. Nucleus speckle . Nucleus, nucleoplasm .
<b>Tissue Specificity</b>	Ubiquitous.
<b>Function</b>	Death-promoting transcriptional repressor.,sequence Caution:Contaminating sequence. Potential poly-A sequence.,subunit:Interacts with Bcl-2 related proteins, EMD, with the adenovirus E1B 19 kDa protein and with DNA.,tissue specificity:Ubiquitous.,
<b>Background</b>	This gene encodes a transcriptional repressor that interacts with several members of the BCL2 family of proteins. Overexpression of this protein induces apoptosis, which can be suppressed by co-expression of BCL2 proteins. The protein localizes to dot-like structures throughout the nucleus, and redistributes to a zone near the nuclear envelope in cells undergoing apoptosis. Multiple transcript variants encoding different isoforms have been found for this gene. [provided by RefSeq, Jul 2008],

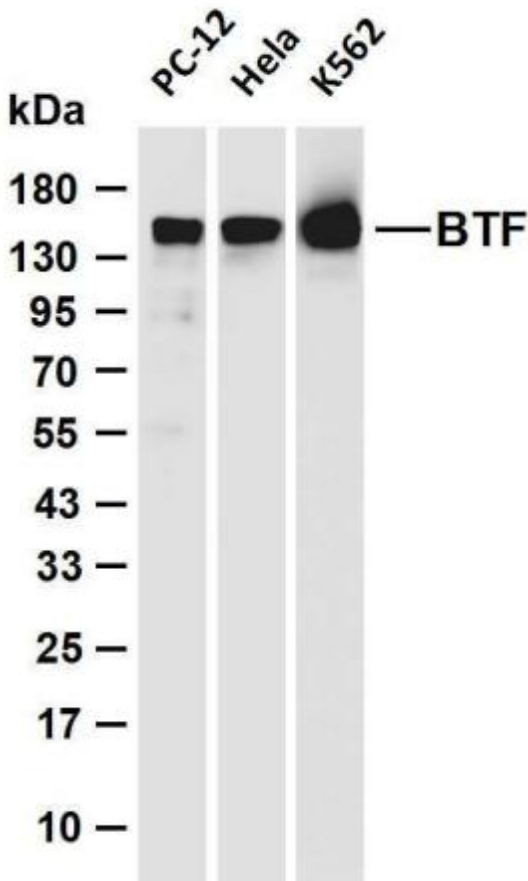


matters needing attention

Avoid repeated freezing and thawing!

Usage suggestions

This product can be used in immunological reaction related experiments. For more information, please consult technical personnel.



Various whole cell lysates were separated by 4-20% SDS-PAGE, and the membrane was blotted with anti-BTF antibody. The HRP-conjugated Goat anti-Rabbit IgG (H + L) antibody was used to detect the antibody. Lane 1: PC-12 Lane 2: HeLa Lane 3: K562 Predicted band size: 106kDa Observed band size: 150kDa

杭州臻优品生物科技有限公司

热销产品:

蛋白、一抗、抗体对、ELISA试剂盒、生化试剂盒  
CCK8试剂盒、QPCR检测试剂盒

检测服务:

ELISA检测及定制服务 | 生化检测 | PCR、QPCR检测 | WB检测  
ICO-IP检测 | 切片 | 染色 | 免疫组化 | 免疫荧光 | 透射电镜全套  
| 宏基因组、转录组、基因组、蛋白质组、代谢组测序



关注官网



关注客服