



Rab 11 Rabbit mAb

Catalog No	YP-rAb-16880
Isotype	IgG
Reactivity	Human,Mouse,Rat
Applications	WB,IHC,IF,IP,ELISA
Gene Name	RAB11A,RAB11B
Protein Name	Ras-related protein Rab-11A,Rab-11,YL8,Ras-related protein Rab-11B
Purification Process	Protein A
Specificity	Endogenous
Formulation	PBS, 50% glycerol, 0.05% Proclin 300, 0.05%BSA
Source	Monoclonal, Rabbit,IgG
Dilution	IHC 1:1000-1:5000; WB 1:2000-1:10000; IF 1:200-1:1000; ELISA 1:5000-1:20000; IP 1:50-1:200; Note: For IHC, we suggest antigen retrieval with TE buffer pH 9.0
Concentration	0.5 mg/ml
Purity	≥90%
Storage Stability	-15° C to -25° C/1 year(Do not lower than -25° C)
Synonyms	RB11A;Rab11B;Ras-related protein Rab-11A,Rab-11,YL8,Ras-related protein Rab-11B;RAB11A ; Ras-related protein Rab-11A ; RAB11B ; YPT3 ; Ras-related protein Rab-11B ; GTP-binding protein YPT3 ;RAB11A
Observed Band	24kD
Calculated Molecular Weight	24kD
Cell Pathway	Cell membrane ; Lipid-anchor . Recycling endosome membrane ; Lipid-anchor . Cleavage furrow . Cytoplasmic vesicle, phagosome . Cytoplasmic vesicle membrane . Translocates with RAB11FIP2 from the vesicles of the endocytic recycling compartment (ERC) to the plasma membrane (PubMed:11994279) . Localizes to the cleavage furrow (PubMed:15601896). Colocalizes with PARD 3, PRKCI, EXOC5, OCLN, PODXL and RAB8A in apical membrane initiation sites (AMIS) during the generation of apical surface and lumenogenesis (PubMed:20890297). Recruited to phagosomes containing S.aureus or M.tuberculosis (PubMed:21255211). Recycling endosome membrane ; Lipid-anchor ; Cytoplasmic side . Cytoplasmic vesicle, secretory vesicle, synaptic vesicle membrane ; Lipid-anchor ; Cytoplasmic side . Cytoplasmic vesicle, phagosome membrane ; Lipid-anchor ; Cytoplasmic side . Recruited to phagosomes containing S.aureus.
Tissue Specificity	Expressed in esophagus squamous epithelium and 208 other cell types or tissues;B-cell lymphoma,Brain,Cerebellum,Muscle,


Function

Regulates endocytic recycling. May exert its functions by interacting with multiple effector proteins in different complexes. Acts as a major regulator of membrane delivery during cytokinesis. Together with MYO5B and RAB8A participates in epithelial cell polarization. Together with RAB3IP, RAB8A, the exocyst complex, PARD3, PRKCI, ANXA2, CDC42 and DNMBP promotes transcytosis of PODXL to the apical membrane initiation sites (AMIS), apical surface formation and lumenogenesis (By similarity). Together with MYO5B participates in CFTR trafficking to the plasma membrane and TF (Transferrin) recycling in nonpolarized cells. Required in a complex with MYO5B and RAB11FIP2 for the transport of NPC1L1 to the plasma membrane. Participates in the sorting and basolateral transport of CDH1 from the Golgi apparatus to the plasma membrane. Regulates the recycling of FCGRT (receptor of Fc region of monomeric Ig G) to basolateral membranes.

Background

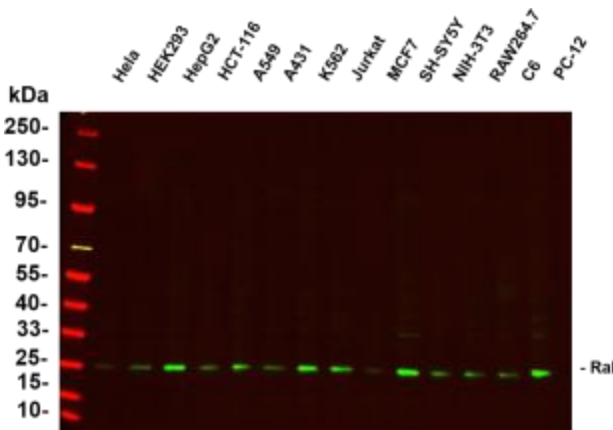
The protein encoded by this gene belongs to the Rab family of the small GTPase superfamily. It is associated with both constitutive and regulated secretory pathways, and may be involved in protein transport. Two transcript variants encoding different isoforms have been found for this gene. [provided by RefSeq, May 2011]

matters needing attention

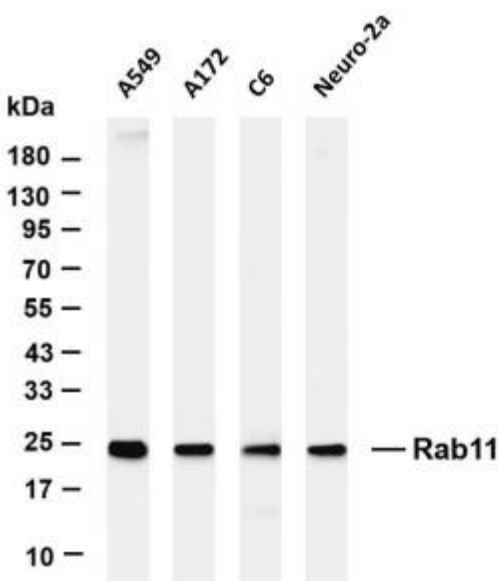
Avoid repeated freezing and thawing!

Usage suggestions

This product can be used in immunological reaction related experiments. For more information, please consult technical personnel.

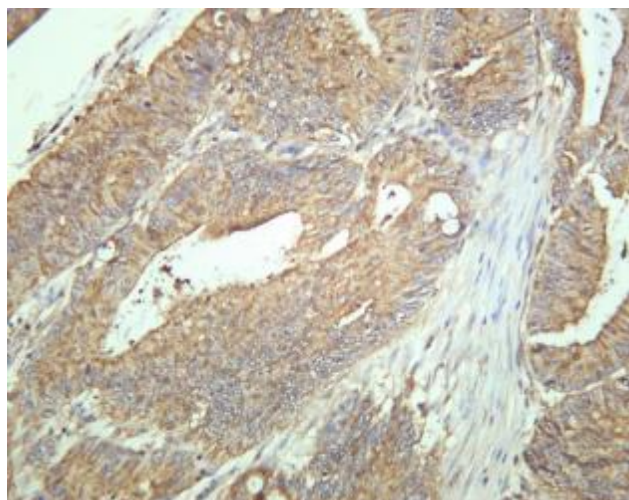


Various whole cell lysates were separated by 4-20% SDS-PAGE, and the primary antibody was used at 4~C, over night with a 1:5000 dilution. The Dylight 800-conjugated Goat anti-Rabbit antibody



Various whole cell lysates were separated by 4-20% SDS-PAGE, and the membrane was blotted with anti-Rab11 antibody. The HRP-conjugated Goat anti-Rabbit IgG(H + L) antibody was used to detect the antibody. Lane 1: A549 Lane 2: A172 Lane 3: C6 Lane 4: Neuro-2a Predicted band size: 24kDa Observed band size: 24kDa





Human colon carcinoma was stained with anti-Rab11 rabbit antibody

杭州臻优品生物科技有限公司

热销产品:

蛋白、一抗、抗体对、ELISA试剂盒、生化试剂盒
CCK8试剂盒、QPCR检测试剂盒

检测服务:

ELISA检测及定制服务 | 生化检测 | PCR、QPCR检测 | WB检测
ICO-IP检测 | 切片 | 染色 | 免疫组化 | 免疫荧光 | 透射电镜全套
| 宏基因组、转录组、基因组、蛋白组、代谢组测序



关注官网



关注客服