



SC6A9 rabbit pAb

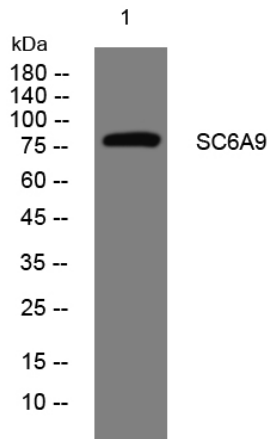
Catalog No	YP-Ab-11549
Isotype	IgG
Reactivity	Human; Mouse;Rat
Applications	WB;ELISA;IHC
Gene Name	SLC6A9
Protein Name	SC6A9
Immunogen	Synthesized peptide derived from human SC6A9 AA range: 101-151
Specificity	This antibody detects endogenous levels of SC6A9 at Human/Mouse/Rat
Formulation	Liquid in PBS containing 50% glycerol, 0.5% BSA and 0.02% sodium azide.
Source	Polyclonal, Rabbit,IgG
Purification	The antibody was affinity-purified from rabbit serum by affinity-chromatography using specific immunogen.
Dilution	WB 1:500-2000;IHC-p 1:50-300; ELISA 2000-20000
Concentration	1 mg/ml
Purity	≥90%
Storage Stability	-20°C/1 year
Synonyms	
Observed Band	78kD
Cell Pathway	Membrane; Multi-pass membrane protein.
Tissue Specificity	Isoform GlyT-1A and isoform GlyT-1B can be found in brain, kidney, pancreas, lung, placenta and liver but isoform GlyT-1C is only found in brain.
Function	function:Terminates the action of glycine by its high affinity sodium-dependent reuptake into presynaptic terminals. May play a role in regulation of glycine levels in NMDA receptor-mediated neurotransmission.,similarity:Belongs to the sodium:neurotransmitter symporter (SNF) family.,tissue specificity:All GLYT-1 subtypes can be found in brain, kidney, pancreas, lung, placenta, liver. But GLYT-1C subtype is only found in the brain.,
Background	The amino acid glycine acts as an inhibitory neurotransmitter in the central nervous system. The protein encoded by this gene is one of two transporters that stop glycine signaling by removing it from the synaptic cleft. [provided by RefSeq, Jun 2016],
matters needing attention	Avoid repeated freezing and thawing!



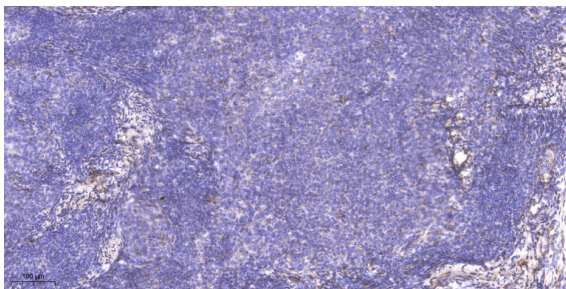
Usage suggestions

This product can be used in immunological reaction related experiments. For more information, please consult technical personnel.

Products Images



Western blot analysis of lysates from SH-SY5Y cells, primary antibody was diluted at 1:1000, 4° over night



Immunohistochemical analysis of paraffin-embedded human cervical carcinoma. 1, Antibody was diluted at 1:200(4° overnight). 2, Tris-EDTA, pH9.0 was used for antigen retrieval. 3, Secondary antibody was diluted at 1:200(room temperature, 45min).