

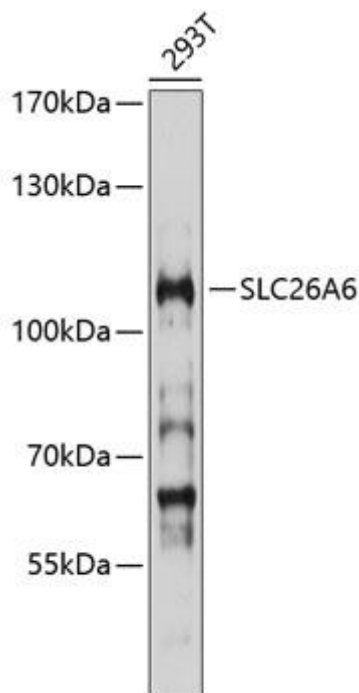


SLC26A6 mouse mAb

Catalog No	YP-mAb-19424
Isotype	IgG
Reactivity	Human,Mouse,Rat
Applications	WB
Gene Name	
Immunogen	Recombinant protein (or fragment).This information is considered to be commercially sensitive.
Specificity	
Formulation	
Source	Monoclonal,Mouse,IgG
Purification	Affinity purification
Dilution	WB 1:500-2000
Concentration	1 mg/ml
Purity	≥90%
Storage Stability	-20°C/1 year
Synonyms	SLC26A6
Observed Band	110kDa
Calculated Molecular Weight	83kDa
Cell Pathway	
Tissue Specificity	
Function	
Background	This gene belongs to the solute carrier 26 family, whose members encode anion transporter proteins.This particular family member encodes a protein involved in transporting chloride, oxalate, sulfate and bicarbonate. Alternatively spliced transcript variants encoding distinct isoforms have been described.
matters needing attention	Avoid repeated freezing and thawing!
Usage suggestions	This product can be used in immunological reaction related experiments. For more information, please consult technical personnel.



Products Images



Western blot analysis of lysates from 293T cells, using SLC26A6 Mouse mAb (A10323) at 1:1000 dilution.

Secondary antibody: HRP-conjugated Goat anti-Mouse IgG (H+L) (AS014) at 1:10000 dilution.

Lysates/proteins: 25 μ g per lane.

Blocking buffer: 3% nonfat dry milk in TBST.

Detection: ECL Basic Kit (RM00020).

Exposure time: 90s.