

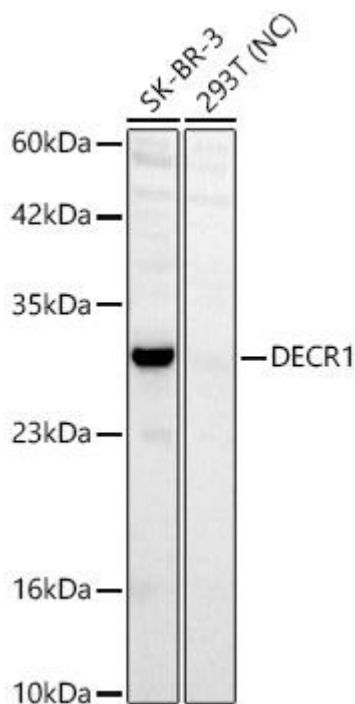


DECR1 mouse mAb

Catalog No	YP-mAb-19421
Isotype	IgG
Reactivity	Human,Mouse,Rat
Applications	WB
Gene Name	
Immunogen	Recombinant protein (or fragment).This information is considered to be commercially sensitive.
Specificity	
Formulation	
Source	Monoclonal,Mouse,IgG
Purification	Affinity purification
Dilution	WB 1:500-2000
Concentration	1 mg/ml
Purity	≥90%
Storage Stability	-20°C/1 year
Synonyms	DECR; NADPH; SDR18C1; DECR1
Observed Band	33kDa
Calculated Molecular Weight	36kDa
Cell Pathway	
Tissue Specificity	
Function	
Background	Enables 2,4-dienoyl-CoA reductase (NADPH) activity; NADPH binding activity; and identical protein binding activity. Involved in fatty acid beta-oxidation. Located in cytosol;mitochondrion; and nucleoplasm. Part of catalytic complex.
matters needing attention	Avoid repeated freezing and thawing!
Usage suggestions	This product can be used in immunological reaction related experiments. For more information, please consult technical personnel.



Products Images



Western blot analysis of various lysates using DECR1 Mouse mAb (A13014) at 1:2000 dilution.

Secondary antibody: HRP-conjugated Goat anti-Mouse IgG (H+L) (AS014) at 1:10000 dilution.

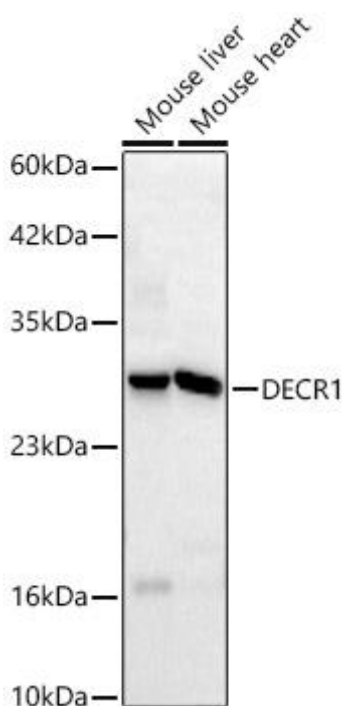
Lysates/proteins: 25 μ g per lane.

Blocking buffer: 3% nonfat dry milk in TBST.

Detection: ECL Basic Kit (RM00020).

Negative control (NC): 293T.

Exposure time: 30s.



Western blot analysis of various lysates using DECR1 Mouse mAb (A13014) at 1:2000 dilution.

Secondary antibody: HRP-conjugated Goat anti-Mouse IgG (H+L) (AS014) at 1:10000 dilution.

Lysates / proteins: 25 μ g per lane.

Blocking buffer: 3 % nonfat dry milk in TBST.

Detection: ECL Basic Kit (RM00020).

Exposure time: 30s.