



TEF-4 Polyclonal Antibody

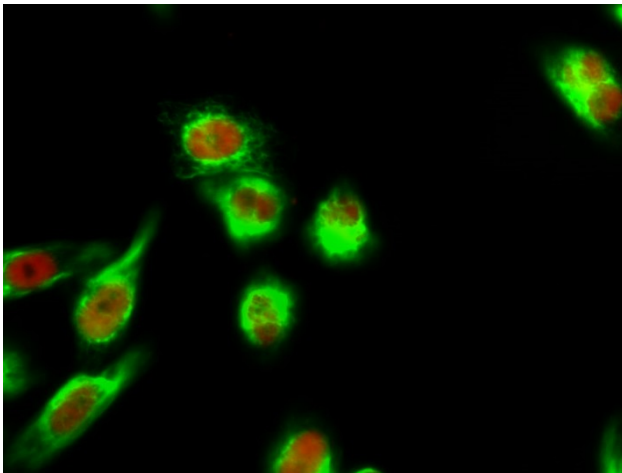
Catalog No	YP-Ab-02096
Isotype	IgG
Reactivity	Human;Mouse
Applications	WB;IHC;IF;ELISA
Gene Name	TEAD2
Protein Name	Transcriptional enhancer factor TEF-4
Immunogen	The antiserum was produced against synthesized peptide derived from human TEAD2. AA range:71-120
Specificity	TEF-4 Polyclonal Antibody detects endogenous levels of TEF-4 protein.
Formulation	Liquid in PBS containing 50% glycerol, 0.5% BSA and 0.02% sodium azide.
Source	Polyclonal, Rabbit,IgG
Purification	The antibody was affinity-purified from rabbit antiserum by affinity-chromatography using epitope-specific immunogen.
Dilution	Immunohistochemistry: 1/100 - 1/300. Immunofluorescence: 1/200 - 1/1000. ELISA: 1/20000. Not yet tested in other applications.
Concentration	1 mg/ml
Purity	≥90%
Storage Stability	-20°C/1 year
Synonyms	TEAD2; TEF4; Transcriptional enhancer factor TEF-4; TEA domain family member 2; TEAD-2
Observed Band	49kD
Cell Pathway	Nucleus.
Tissue Specificity	Brain, Eye, Skin, Testis,
Function	function:Putative transcription factor that binds to the SPH and GT-IIC "enhansons" (5'-GTGGAATGT-3'). May be involved in the gene regulation of neural development. Binds to the M-CAT motif.,similarity:Contains 1 TEA DNA-binding domain.,
Background	function:Putative transcription factor that binds to the SPH and GT-IIC "enhansons" (5'-GTGGAATGT-3'). May be involved in the gene regulation of neural development. Binds to the M-CAT motif.,similarity:Contains 1 TEA DNA-binding domain.,
matters needing attention	Avoid repeated freezing and thawing!



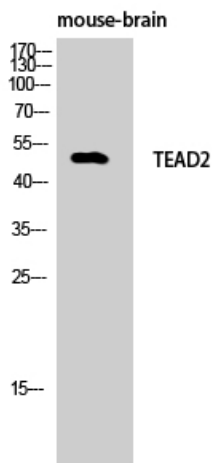
Usage suggestions

This product can be used in immunological reaction related experiments. For more information, please consult technical personnel.

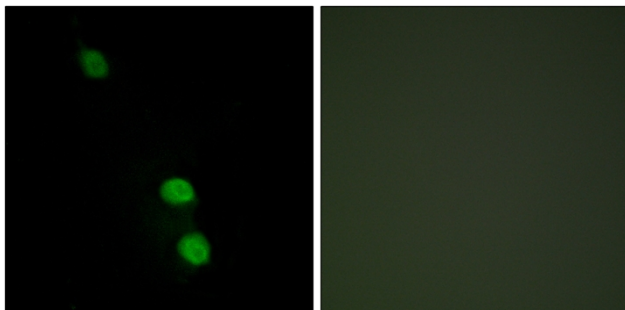
Products Images



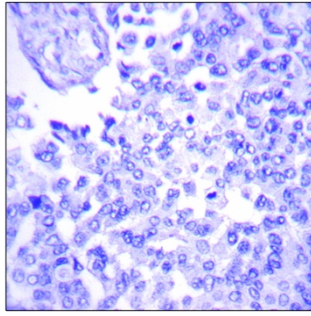
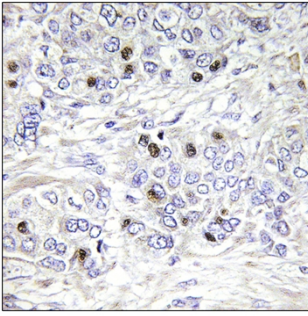
Immunofluorescence analysis of HeLa cell. 1,TEF-4 Polyclonal Antibody(red) was diluted at 1:200(4° overnight). β -actin Monoclonal Antibody(5B7)(green) was diluted at 1:200(4° overnight). 2, Goat Anti Rabbit Alexa Fluor 594 Catalog:RS3611 was diluted at 1:1000(room temperature, 50min). Goat Anti Mouse Alexa Fluor 488 Catalog:RS3208 was diluted at 1:1000(room temperature, 50min).



Western Blot analysis of mouse-brain cells using TEF-4 Polyclonal Antibody cells nucleus extracted by Minute TM Cytoplasmic and Nuclear Fractionation kit (SC-003, Inventbiotech, MN, USA).



Immunofluorescence analysis of HepG2 cells, using TEAD2 Antibody. The picture on the right is blocked with the synthesized peptide.



Immunohistochemistry analysis of paraffin-embedded human breast carcinoma tissue, using TEAD2 Antibody. The picture on the right is blocked with the synthesized peptide.