

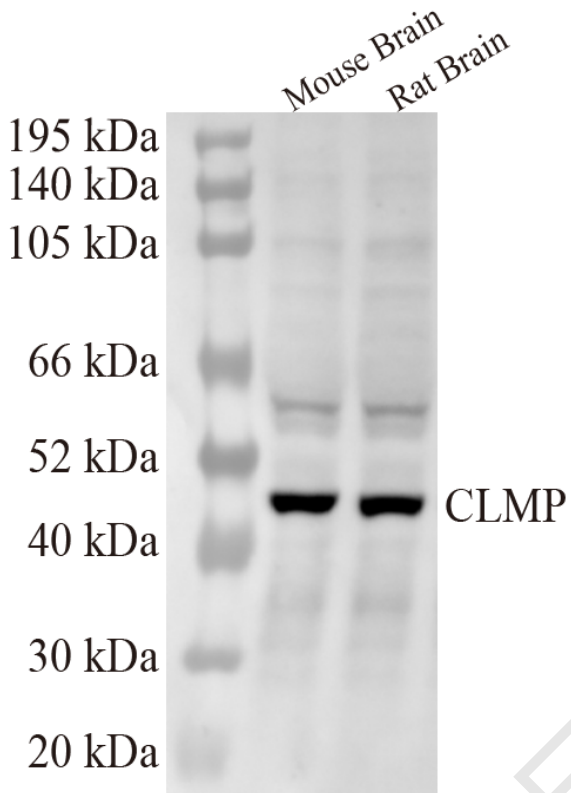


## CLMP rabbit pAb

货号	YP-Ab-18276
同位型	IgG
应用	WB
种属	Human;Mouse;Rat
靶点	CLMP
基因名称	CLMP ACAM ASAM UNQ318/PRO363
蛋白名称	CXADR-like membrane protein (Adipocyte adhesion molecule) (Coxsackie- and adenovirus receptor-like membrane protein) (CAR-like membrane protein)
免疫原	Synthesized peptide derived from human CLMP
特异性	This antibody detects endogenous levels of CLMP at Human, Mouse,Rat
组成	Liquid in PBS containing 50% glycerol, 0.5% BSA and 0.02% sodium azide.
来源	Polyclonal, Rabbit,IgG
稀释	WB 1:500-2000
纯化工艺	The antibody was affinity-purified from rabbit antiserum by affinity-chromatography using epitope-specific immunogen.
分子量	41kD
功能	May be involved in the cell-cell adhesion. May play a role in adipocyte differentiation and development of obesity. Is required for normal small intestine development.
细胞定位	Cell junction, tight junction . Cell membrane ; Single-pass type I membrane protein .
组织表达	Predominantly expressed in epithelial cells within different tissues and in the white adipose tissue. Expressed at high levels in small intestine and placenta, at intermediate levels in the heart, skeletal muscle, colon, spleen, kidney and lung and at low levels in the liver and peripheral blood leukocytes. Highly abundant in the intestine during embryo and fetal development (at protein level).
浓度	1 mg/ml
储存	-15°C to -25°C/1 year(Do not lower than -25°C)
有关注意事项	Avoid repeated freezing and thawing!
使用建议	This product can be used in immunological reaction related experiments. For more information, please consult technical personnel.



## Products Images



优品生物