



HAVR2 Monoclonal Antibody

Catalog No	YP-mAb-07102
Isotype	IgG
Reactivity	Human;Mouse;Rat
Applications	WB
Gene Name	HAVCR2 TIM3 TIMD3
Protein Name	Hepatitis A virus cellular receptor 2 (HAVcr-2) (T-cell immunoglobulin and mucin domain-containing protein 3) (TIMD-3) (T-cell membrane protein 3) (TIM-3)
Immunogen	Synthesized peptide derived from human protein . at AA range: 10-90
Specificity	HAVR2 Monoclonal Antibody detects endogenous levels of protein.
Formulation	Liquid in PBS containing 50% glycerol, and 0.02% sodium azide.
Source	Monoclonal, Mouse,IgG
Purification	The antibody was affinity-purified from mouse antiserum by affinity-chromatography using epitope-specific immunogen.
Dilution	WB 1:500-1:2000
Concentration	1 mg/ml
Purity	≥90%
Storage Stability	-20°C/1 year
Synonyms	
Observed Band	33kD
Cell Pathway	Membrane ; Single-pass type I membrane protein . Cell junction . Cell membrane . Localizes to the immunological synapse between CD8+ T-cells and target cells. .
Tissue Specificity	Expressed in T-helper type 1 (Th1) lymphocytes. Expressed on regulatory T (Treg) cells after TCR stimulation. Expressed in dendritic cells and natural killer (NK) cells. Expressed in epithelial tissues. Expression is increased on CD4+ and CD8+ T-cells in chronic hepatitis C virus (HCV) infection. In progressive HIV-1 infection, expression is up-regulated on HIV-1-specific CD8 T-cells.
Function	disease:Genetic variation in HAVCR2 may influence susceptibility to rheumatoid arthritis (RA) [MIM:180300]. RA is an inflammatory disease, primarily of the joints, with autoimmune features and a complex genetic component. It is characterized by inflammation of synovial tissues and the formation of rheumatoid pannus, which is caMABLE of eroding adjacent cartilage and bone, causing subsequent joint destruction.,function:Regulates macrophage activation. Inhibits T-helper type 1 lymphocyte (Th1)-mediated auto- and alloimmune responses and promotes immunological tolerance. May be also involved in T-cell homing. Receptor for LGALS9.,similarity:Belongs to the immunoglobulin superfamily. TIM family.,similarity:Contains 1 Ig-like V-type (immunoglobulin-like) domain.,tissue specificity:T-helper type 1 lymphocyte (Th1)-specific.,

**Background**

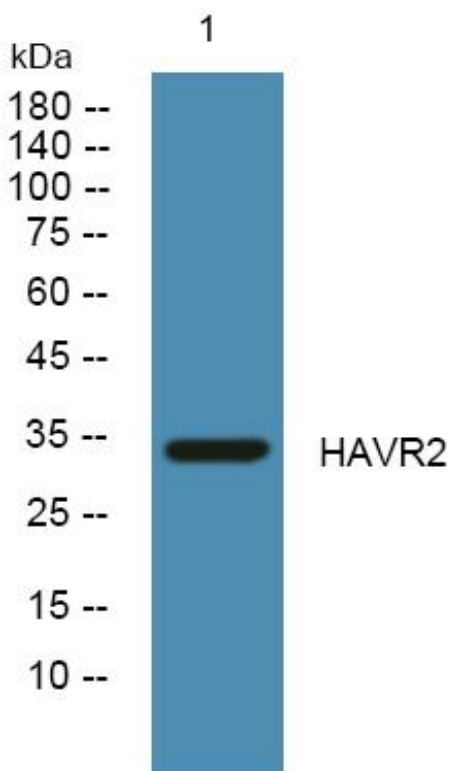
The protein encoded by this gene belongs to the immunoglobulin superfamily, and TIM family of proteins. CD4-positive T helper lymphocytes can be divided into types 1 (Th1) and 2 (Th2) on the basis of their cytokine secretion patterns. Th1 cells are involved in cell-mediated immunity to intracellular pathogens and delayed-type hypersensitivity reactions, whereas, Th2 cells are involved in the control of extracellular helminthic infections and the promotion of atopic and allergic diseases. This protein is a Th1-specific cell surface protein that regulates macrophage activation, and inhibits Th1-mediated auto- and alloimmune responses, and promotes immunological tolerance. [provided by RefSeq, Sep 2011],

matters needing attention

Avoid repeated freezing and thawing!

Usage suggestions

This product can be used in immunological reaction related experiments. For more information, please consult technical personnel.

Products Images

Western Blot analysis of various cells using HAVR2 Monoclonal Antibody