



ESPB1 rabbit pAb

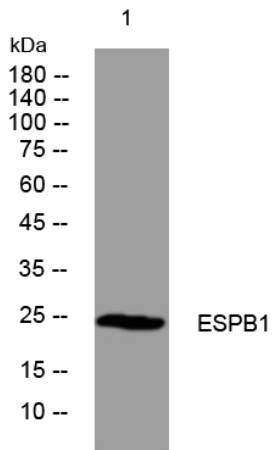
Catalog No	YP-Ab-11121
Isotype	IgG
Reactivity	Human
Applications	WB
Gene Name	ELSPBP1 E12
Protein Name	ESPB1
Immunogen	Synthesized peptide derived from human ESPB1 AA range: 67-117
Specificity	This antibody detects endogenous levels of ESPB1 at Human
Formulation	Liquid in PBS containing 50% glycerol, 0.5% BSA and 0.02% sodium azide.
Source	Polyclonal, Rabbit,IgG
Purification	The antibody was affinity-purified from rabbit serum by affinity-chromatography using specific immunogen.
Dilution	WB 1: 500-2000
Concentration	1 mg/ml
Purity	≥90%
Storage Stability	-20°C/1 year
Synonyms	
Observed Band	25kD
Cell Pathway	Secreted .
Tissue Specificity	Detected in cauda epididymidal fluid and on sperm membrane (at protein level).
Function	function: Binds to spermatozoa upon ejaculation and may play a role in sperm capacitation. Has phosphorylcholine-binding activity.,PTM: N-glycosylated.,similarity: Belongs to the seminal plasma protein family.,similarity: Contains 4 fibronectin type-II domains.,tissue specificity: Detected in cauda epididymidal fluid and on sperm membrane (at protein level).
Background	The protein encoded by this gene belongs to the sperm-coating protein family of epididymal origin. This protein and its canine homolog are the first known examples of proteins with four tandemly arranged fibronectin type 2 (Fn2) domains in the Fn2-module protein family. [provided by RefSeq, Jul 2008],
matters needing attention	Avoid repeated freezing and thawing!



Usage suggestions

This product can be used in immunological reaction related experiments. For more information, please consult technical personnel.

Products Images



Western blot analysis of lysates from MCF-7 cells, primary antibody was diluted at 1:1000, 4° over night