



CLPP (PT1941R) Rabbit mAb

Catalog No	YP-rAb-18534
Isotype	IgG
Reactivity	Human,Mouse,Rat
Applications	WB、IHC、IF、IP、ELISA
Gene Name	CLPP
Protein Name	Putative ATP-dependent Clp protease proteolytic subunit, mitochondrial (Endopeptidase Clp)
Immunogen	The specific immunogen used to produce this antibody is proprietary information.
Specificity	Endogenous
Formulation	PBS, 50% glycerol, 0.05% Proclin 300, 0.05%BSA
Source	Monoclonal, Rabbit,IgG
Purification	Recombinant Antibody expressed in animal component-free (ACF) media, purified via Protein A affinity chromatography.
Dilution	IHC 1:200-1:1000; WB 1:2000-1:10000; IF 1:200-1:1000; ELISA 1:5000-1:20000; IP 1:50-1:200 Note: For IHC, we suggest antigen retrieval with TE buffer pH 9.0 (Cat#YS0004)
Concentration	0.2 mg/ml
Purity	≥90%
Storage Stability	-20°C/1 year
Synonyms	
Observed Band	23kD
Calculated Molecular Weight	30kD
Cell Pathway	Mitochondrion matrix .
Tissue Specificity	Detected in liver (at protein level) . Predominantly expressed in skeletal muscle. Intermediate levels in heart , liver and pancreas. Low in brain , placenta , lung and kidney.
Function	Protease component of the Clp complex that cleaves peptides and various proteins in an ATP-dependent process. Has low peptidase activity in the absence of CLPX. The Clp complex can degrade CSN1S1 , CSN2 and CSN3 , as well as synthetic peptides (in vitro) and may be responsible for a fairly general and central housekeeping function rather than for the degradation of specific substrates . Cleaves PINK1 in the mitochondrion .
Background	



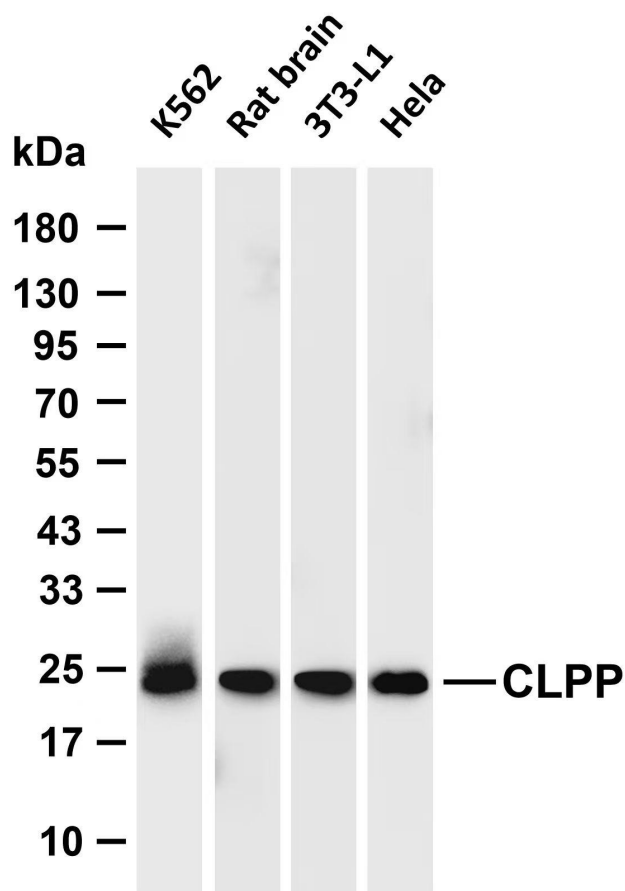
matters needing attention

Avoid repeated freezing and thawing!

Usage suggestions

This product can be used in immunological reaction related experiments. For more information, please consult technical personnel.

Products Images



Various whole cell lysates were separated by 4-20% SDS-PAGE, and the membrane was blotted with anti-CLPP (PT1941R) antibody. The HRP-conjugated Goat anti-Rabbit IgG (H + L) antibody was used to detect the antibody.

Lane 1: K562

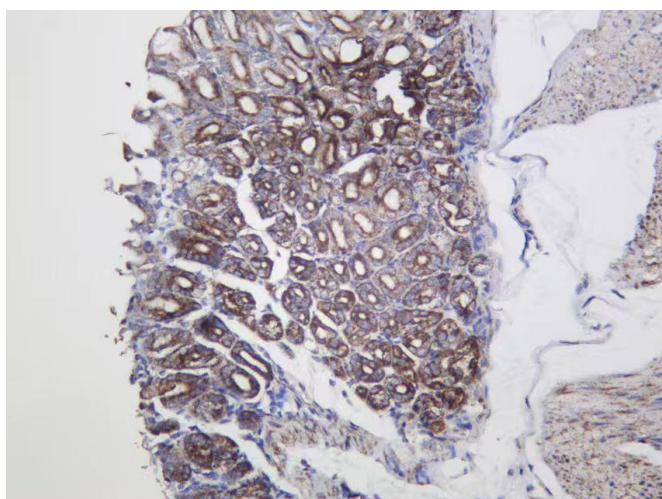
Lane 2: Rat brain

Lane 3: 3T3-L1

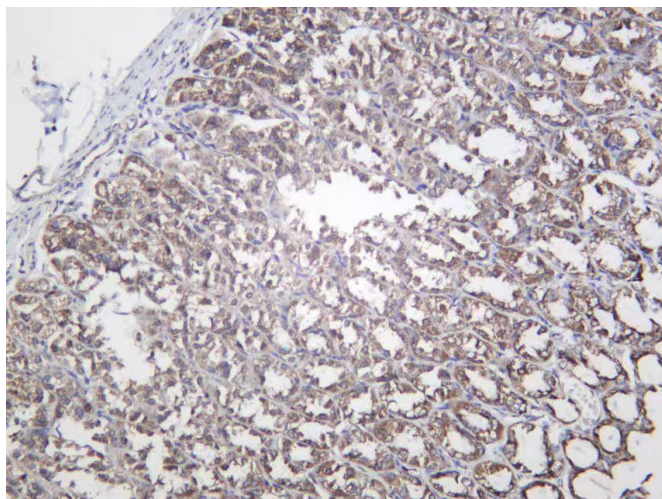
Lane 4: HeLa

Predicted band size: 30kDa

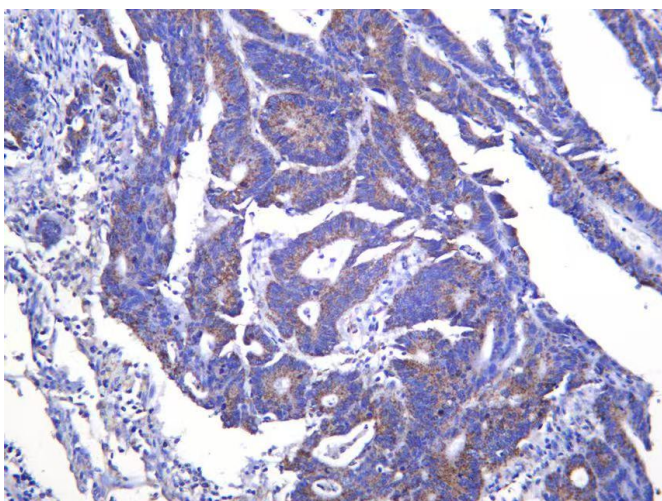
Observed band size: 23kDa



Mouse stomach was stained with anti-CLPP (PT1941R) Rabbit antibody



Rat stomach was stained with anti-CLPP (PT1941R) Rabbit antibody



Human colon cancer was stained with anti-CLPP (PT1941R) Rabbit antibody