



Sec24c mouse mAb

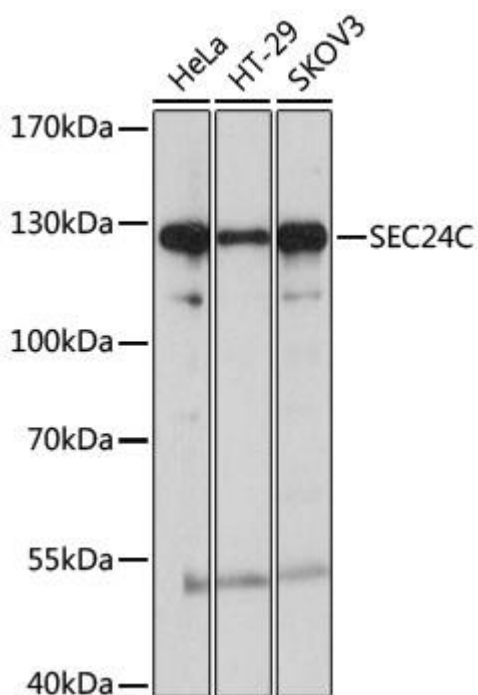
Catalog No	YP-mAb-19406
Isotype	IgG
Reactivity	Human, Mouse, Rat
Applications	WB
Gene Name	
Protein Name	
Immunogen	Recombinant protein (or fragment). This information is considered to be commercially sensitive.
Specificity	
Formulation	
Source	Monoclonal, Mouse, IgG
Purification	Affinity purification
Dilution	WB 1:500-2000
Concentration	1 mg/ml
Purity	≥90%
Storage Stability	-20°C/1 year
Synonyms	SEC24C
Observed Band	118kDa
Calculated Molecular Weight	118kDa
Cell Pathway	
Tissue Specificity	
Function	
Background	The protein encoded by this gene is a member of the SEC24 subfamily of the SEC23/SEC24 family, which is involved in vesicle trafficking. The encoded protein has similarity to yeast Sec24p component of COPII. COPII is the coat protein complex responsible for vesicle budding from the ER. The product of this gene may play a role in shaping the vesicle, as well as in cargo selection and concentration. Alternatively spliced transcript variants encoding the same protein have been identified.
matters needing attention	Avoid repeated freezing and thawing!



Usage suggestions

This product can be used in immunological reaction related experiments. For more information, please consult technical personnel.

Products Images



Western blot analysis of various lysates using SEC24C Mouse mAb (A10797) at 1:1000 dilution. Secondary antibody: HRP-conjugated Goat anti-Mouse IgG (H+L) (AS014) at 1:10000 dilution. Lysates/proteins: 25 μ g per lane. Blocking buffer: 3% nonfat dry milk in TBST. Detection: ECL Basic Kit (RM00020). Exposure time: 30s.