



GPT rabbit pAb

Catalog No	YP-Ab-09050
Isotype	IgG
Reactivity	Human; Mouse
Applications	WB
Gene Name	DPAGT1 DPAGT2
Protein Name	GPT
Immunogen	Synthesized peptide derived from human GPT AA range: 209-259
Specificity	This antibody detects endogenous levels of GPT at Human/Mouse
Formulation	Liquid in PBS containing 50% glycerol, 0.5% BSA and 0.02% sodium azide.
Source	Polyclonal, Rabbit,IgG
Purification	The antibody was affinity-purified from rabbit serum by affinity-chromatography using specific immunogen.
Dilution	WB 1: 500-2000
Concentration	1 mg/ml
Purity	≥90%
Storage Stability	-20°C/1 year
Synonyms	
Observed Band	45kD
Cell Pathway	Endoplasmic reticulum membrane; Multi-pass membrane protein .
Tissue Specificity	
Function	catalytic activity:UDP-N-acetyl-D-glucosamine + dolichyl phosphate = UMP + N-acetyl-D-glucosaminyl-diphosphodolichol.,disease:Defects in DPAGT1 are the cause of congenital disorder of glycosylation type 1J (CDG1J) [MIM:608093]. CDGs are a family of severe inherited diseases caused by a defect in protein N-glycosylation. They are characterized by under-glycosylated serum proteins. These multisystem disorders present with a wide variety of clinical features, such as disorders of the nervous system development, psychomotor retardation, dysmorphic features, hypotonia, coagulation disorders, and immunodeficiency. The broad spectrum of features reflects the critical role of N-glycoproteins during embryonic development, differentiation, and maintenance of cell functions.,function:Catalyzes the initial step in the synthesis of dolichol-P-P-oligosaccharides.,online information:GlycoGene database,
Background	The protein encoded by this gene is an enzyme that catalyzes the first step in the dolichol-linked oligosaccharide pathway for glycoprotein biosynthesis. This enzyme belongs to the glycosyltransferase family 4. This protein is an integral



membrane protein of the endoplasmic reticulum. The congenital disorder of glycosylation type Ij is caused by mutation in the gene encoding this enzyme. [provided by RefSeq, Jul 2008],

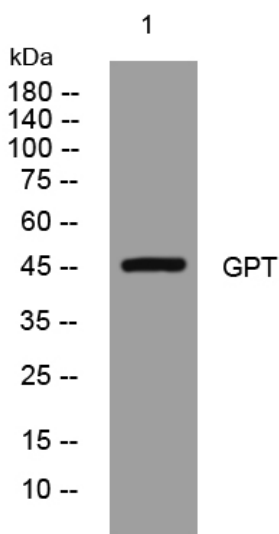
matters needing attention

Avoid repeated freezing and thawing!

Usage suggestions

This product can be used in immunological reaction related experiments. For more information, please consult technical personnel.

Products Images



Western blot analysis of lysates from HuvEc cells, primary antibody was diluted at 1:1000, 4° over night