



I-TAC rabbit pAb

Catalog No	YP-Ab-12436
Isotype	IgG
Reactivity	Human;Rat;Mouse;
Applications	WB;IHC
Gene Name	CXCL11 ITAC SCYB11 SCYB9B
Protein Name	I-TAC
Immunogen	Synthesized peptide derived from human I-TAC AA range: 45-94
Specificity	This antibody detects endogenous levels of Human I-TAC
Formulation	Liquid in PBS containing 50% glycerol, 0.5% BSA and 0.02% sodium azide.
Source	Polyclonal, Rabbit,IgG
Purification	The antibody was affinity-purified from rabbit serum by affinity-chromatography using specific immunogen.
Dilution	WB 1:500-2000;IHC-p 1:50-300
Concentration	1 mg/ml
Purity	≥90%
Storage Stability	-20°C/1 year
Synonyms	C-X-C motif chemokine 11 (Beta-R1;H174;Interferon gamma-inducible protein 9;IP-9;Interferon-inducible T-cell alpha chemoattractant;I-TAC;Small-inducible cytokine B11)
Observed Band	10kD
Cell Pathway	Secreted.
Tissue Specificity	High levels in peripheral blood leukocytes, pancreas and liver astrocytes. Moderate levels in thymus, spleen and lung. Low levels in placenta, prostate and small intestine. Also found in epidermal basal layer keratinocytes in skin disorders.
Function	chemotaxis, defense response, inflammatory response, immune response, cell surface receptor linked signal transduction, G-protein coupled receptor protein signaling pathway, cell-cell signaling, behavior, locomotory behavior,response to wounding, taxis,
Background	disease:Expressed in a variety of skin disorders, including allergic contact dermatitis, lichen planus and mycosis fungoides.,function:Chemotactic for interleukin-activated T-cells but not unstimulated T-cells, neutrophils or monocytes. Induces calcium release in activated T-cells. Binds to CXCR3. May play an important role in CNS diseases which involve T-cell recruitment. May play a role in skin immune responses.,induction:By interferon gamma and interferon beta. Induction by IFN-gamma is enhanced by TNF-alpha in monocytes, dermal



fibroblasts and endothelial cells, and by IL-1 in astrocytes.,mass spectrometry: PubMed:10233762,online information: CXCL11 entry,similarity:Belongs to the intercrine alpha (chemokine CxC) family.,tissue specificity:High levels in peripheral blood leukocytes, pancreas and liver astrocytes. Moderate levels in thymus, spleen and lung. Low levels in placenta, prostate and small intestine. Also found in epidermal basal layer keratinocytes in skin disorders.,

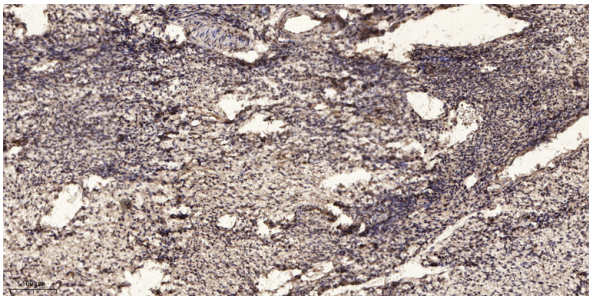
matters needing attention

Avoid repeated freezing and thawing!

Usage suggestions

This product can be used in immunological reaction related experiments. For more information, please consult technical personnel.

Products Images



Immunohistochemical analysis of paraffin-embedded human oophoroma. 1, Antibody was diluted at 1:200(4° overnight). 2, Tris-EDTA,pH9.0 was used for antigen retrieval. 3,Secondary antibody was diluted at 1:200(room temperature, 45min).