



ULA1 (PT1976R) Rabbit mAb

Catalog No	YP-rAb-18529
Isotype	IgG
Reactivity	Human,Rat
Applications	WB、IHC、IF、IP、ELISA
Gene Name	NAE1 APPBP1 HPP1
Protein Name	NEDD8-activating enzyme E1 regulatory subunit (Amyloid beta precursor protein-binding protein 1, 59 kDa) (APP-BP1) (Amyloid protein-binding protein 1) (Proto-oncogene protein 1)
Immunogen	
Specificity	Endogenous
Formulation	PBS, 50% glycerol, 0.05% Proclin 300, 0.05%BSA
Source	Monoclonal, Rabbit,IgG
Purification	Recombinant Antibody expressed in animal component-free (ACF) media, purified via Protein A affinity chromatography.
Dilution	IHC 1:200-1:1000; WB 1:2000-1:10000; IF 1:200-1:1000; ELISA 1:5000-1:20000; IP 1:50-1:200; Note: For IHC, we suggest antigen retrieval with TE buffer pH 9.0 (Cat#YS0004)
Concentration	1 mg/ml
Purity	≥90%
Storage Stability	-20°C/1 year
Synonyms	
Observed Band	60kD
Calculated Molecular Weight	60kD
Cell Pathway	Cell membrane . Colocalizes with APP in lipid rafts.
Tissue Specificity	Ubiquitous in fetal tissues. Expressed throughout the adult brain.
Function	Caution:The sequence shown here is derived from an Ensembl automatic analysis pipeline and should be considered as preliminary data.,enzyme regulation:Binding of TP53BP2 to the regulatory subunit NAE1 decreases neddylation activity.,Function:Regulatory subunit of the dimeric UBA3-NAE1 E1 enzyme. E1 activates NEDD8 by first adenylating its C-terminal glycine residue with ATP, thereafter linking this residue to the side chain of the catalytic cysteine, yielding a NEDD8-UBA3 thioester and free AMP. E1 finally transfers NEDD8 to the catalytic cysteine of UBE2M. Necessary for cell cycle progression through the S-M checkpoint. Overexpression of NAE1 causes apoptosis through deregulation of NEDD8 conjugation.,miscellaneous:NAE1 and UBA3 correspond to the N-terminal and the C-terminal part of yeast UBA3. In yeast the two subunits form



a single polypeptide chain.,pathway:Protein modification; protein neddylation.,similarity:Belongs to the ubiquitin-activating E1 family. ULA1 subfamily.,subcellular location:Colocalizes with APP in lipid rafts.,subunit:Heterodimer of UBA3 and NAE1. The complex binds NEDD8 and UBE2M. Binds APP and TP53BP2.,tissue specificity:Ubiquitous in fetal tissues. Expressed throughout the adult brain.,

Background

The protein encoded by this gene binds to the beta-amyloid precursor protein. Beta-amyloid precursor protein is a cell surface protein with signal-transducing properties, and it is thought to play a role in the pathogenesis of Alzheimer's disease. In addition, the encoded protein can form a heterodimer with UBE1C and bind and activate NEDD8, a ubiquitin-like protein. This protein is required for cell cycle progression through the S/M checkpoint. Three transcript variants encoding different isoforms have been found for this gene. [provided by RefSeq, Jul 2008],

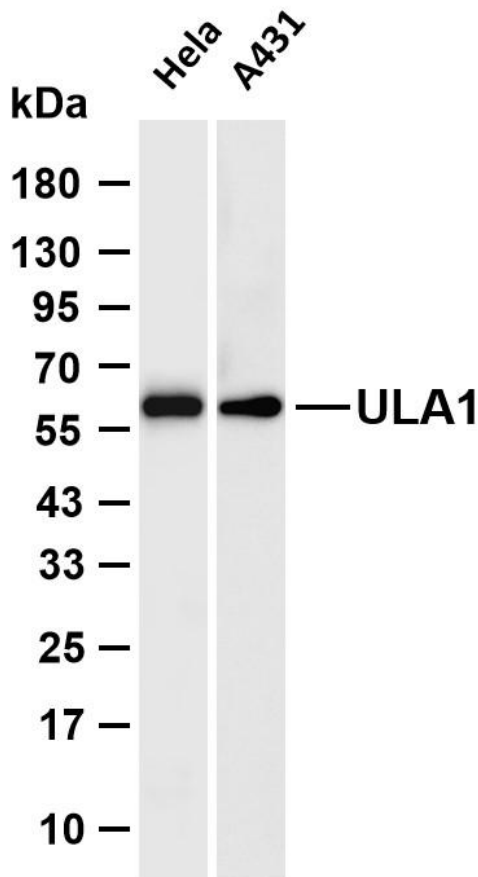
matters needing attention

Avoid repeated freezing and thawing!

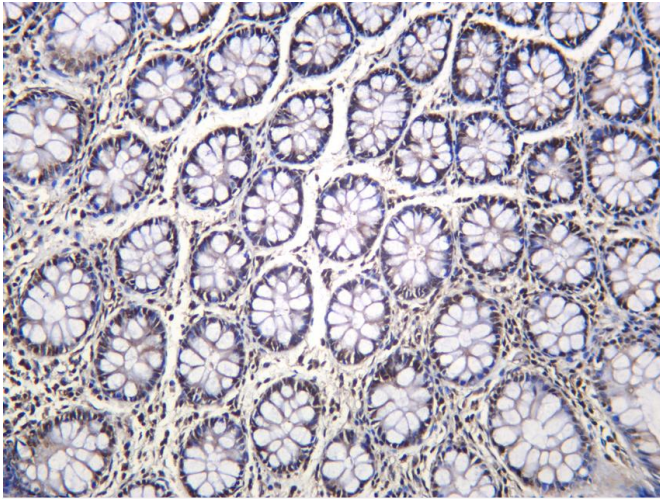
Usage suggestions

This product can be used in immunological reaction related experiments. For more information, please consult technical personnel.

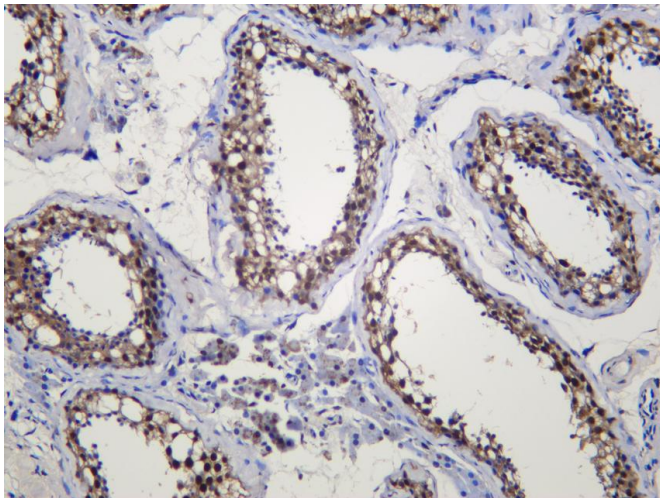
Products Images



Various whole cell lysates were separated by 4-20% SDS-PAGE, and the membrane was blotted with anti-ULA1 (PT1976R) antibody. The HRP-conjugated Goat anti-Rabbit IgG (H + L) antibody was used to detect the antibody. Lane 1: HeLa Lane 2: A431 Predicted band size: 60kDa Observed band size: 60kDa



Human colon was stained with anti-ULA1 (PT1976R)
Rabbit antibody



Human testis was stained with anti-ULA1 (PT1976R)
Rabbit antibody