



OSM (PT1815R) Rabbit mAb

Catalog No	YP-rAb-18525
Isotype	IgG
Reactivity	Human,Mouse
Applications	IHC;WB;IF;ELISA
Gene Name	OSM
Protein Name	Oncostatin-M (OSM)
Immunogen	
Specificity	Endogenous
Formulation	PBS, 50% glycerol, 0.05% Proclin 300, 0.05%BSA
Source	Monoclonal,Rabbit,IgG
Purification	Protein A
Dilution	IHC 1:200-1:1000; WB 1:2000-1:10000; IF 1:200-1:1000; ELISA 1:5000-1:20000; Note: For IHC, we suggest antigen retrieval with TE buffer pH 9.0
Concentration	0.5 mg/ml
Purity	≥90%
Storage Stability	-20°C/1 year
Synonyms	Oncostatin-M ;OSM ;
Observed Band	22kD
Calculated Molecular Weight	28kD
Cell Pathway	Secreted.
Tissue Specificity	Lung,T-cell,
Function	Growth regulator. Inhibits the proliferation of a number of tumor cell lines. Stimulates proliferation of AIDS-KS cells. It regulates cytokine production, including IL-6, G-CSF and GM-CSF from endothelial cells. Uses both type I OSM receptor (heterodimers composed of LIPR and IL6ST) and type II OSM receptor (heterodimers composed of OSMR and IL6ST).,similarity:Belongs to the LIF/OSM family.,
Background	This gene encodes a member of the leukemia inhibitory factor/oncostatin-M (LIF/OSM) family of proteins. The encoded preproprotein is proteolytically processed to generate the mature protein. This protein is a secreted cytokine and growth regulator that inhibits the proliferation of a number of tumor cell lines. This protein also regulates the production of other cytokines, including interleukin 6, granulocyte-colony stimulating factor and granulocyte-macrophage colony stimulating factor in endothelial cells. This gene and the related gene, leukemia



inhibitory factor, also present on chromosome 22, may have resulted from the duplication of a common ancestral gene. Alternative splicing results in multiple transcript variants, at least one of which encodes an isoform that is proteolytically processed. [provided by RefSeq, Jan 2016],

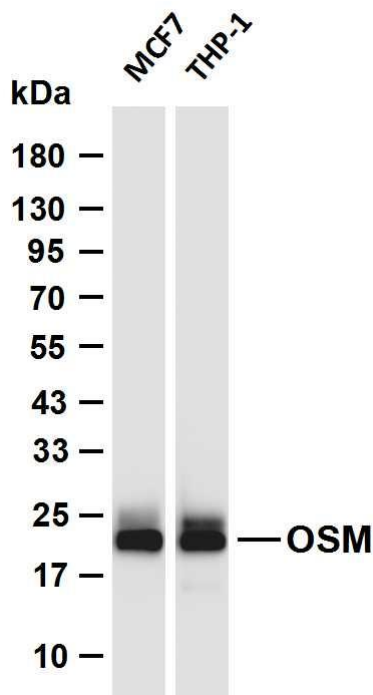
matters needing attention

Avoid repeated freezing and thawing!

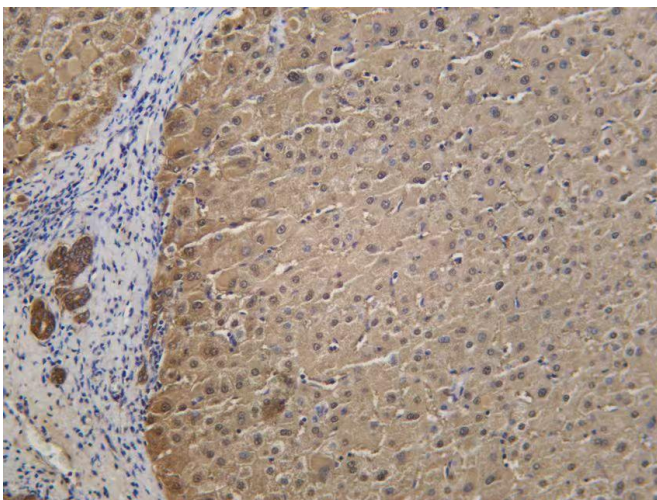
Usage suggestions

This product can be used in immunological reaction related experiments. For more information, please consult technical personnel.

Products Images



Various whole cell lysates were separated by 4-20% SDS-PAGE, and the membrane was blotted with anti-OSM (PT1815R) antibody. The HRP-conjugated Goat anti-Rabbit IgG (H + L) antibody was used to detect the antibody. Lane 1: MCF7 Lane 2: THP-1 Predicted band size: 28kDa Observed band size: 22kDa



human liver was stained with anti-OSM (PT1815R) Rabbit antibody