



MSR1 Rabbit mAb

Catalog No	YP-rAb-18524
Isotype	IgG
Reactivity	Human,Mouse,Rat
Applications	WB,ELISA
Gene Name	
Protein Name	
Immunogen	Synthetic peptide. This information is considered to be commercially sensitive.
Specificity	
Formulation	
Source	Monoclonal, Rabbit,IgG
Purification	Affinity purification
Dilution	WB 1:1000 - 1:6000 ELISA Recommended starting concentration is 1 µg/mL. Please optimize the concentration based on your specific assay requirements.
Concentration	0.5 mg/ml
Purity	≥90%
Storage Stability	-20°C/1 year
Synonyms	SRA; SR-A; CD204; SR-AI; phSR1; phSR2; SCARA1; SR-AII; SR-AIII; MSR1
Observed Band	70kDa
Calculated Molecular Weight	50kDa
Cell Pathway	
Tissue Specificity	
Function	
Background	This gene encodes the class A macrophage scavenger receptors, which include three different types (1, 2, 3) generated by alternative splicing of this gene. These receptors or isoforms are macrophage-specific trimeric integral membrane glycoproteins and have been implicated in many macrophage-associated physiological and pathological processes including atherosclerosis, Alzheimer's disease, and host defense. The isoforms type 1 and type 2 are functional receptors and are able to mediate the endocytosis of modified low density lipoproteins (LDLs). The isoform type 3 does not internalize modified LDL (acetylLDL) despite having the domain shown to mediate this function in the types 1 and 2 isoforms. It has an altered intracellular processing and is trapped within the endoplasmic reticulum, making it unable to perform endocytosis. The isoform



type 3 can inhibit the function of isoforms type 1 and type 2 when co-expressed, indicating a dominant negative effect and suggesting a mechanism for regulation of scavenger receptor activity in macrophages.

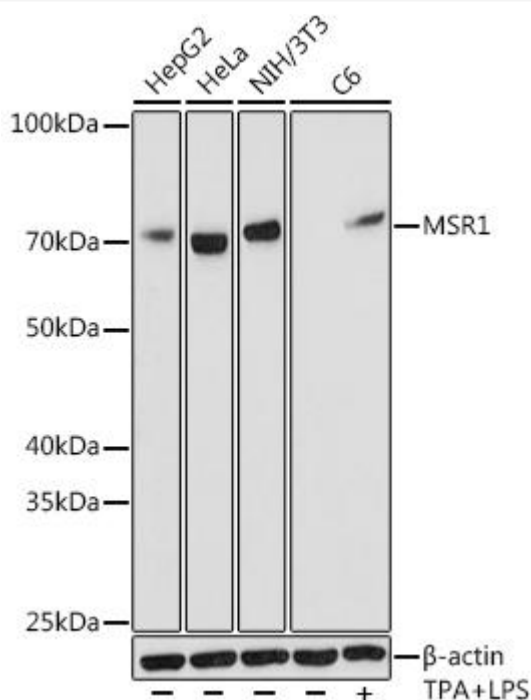
matters needing attention

Avoid repeated freezing and thawing!

Usage suggestions

This product can be used in immunological reaction related experiments. For more information, please consult technical personnel.

Products Images



Western blot analysis of various lysates using MSR1 Rabbit mAb (A2401) at 1:1000 dilution. C6 cells were treated with TPA for 3 hours and LPS for 6 hours of stimulation. Secondary antibody: HRP-conjugated Goat anti-Rabbit IgG (H+L) (AS014) at 1:10000 dilution. Lysates/proteins: 25 μ g per lane. Blocking buffer: 3% nonfat dry milk in TBST. Detection: ECL Basic Kit (RM00020). Exposure time: 10s.