



IGF-IIR (Phospho Ser2484) Rabbit pAb

Catalog No	YP-Ab-19386
Isotype	IgG
Reactivity	Human,Mouse,Rat
Applications	IHC、IF、WB
Gene Name	IGF2R MPRI
Protein Name	IGF2R (Phospho-Ser2484)
Immunogen	Synthesized peptide derived from human IGF2R (Phospho-Ser2484)
Specificity	This antibody detects endogenous phospho levels of IGF2R (Phospho-Ser2484) at Human:S2484, Mouse:S2476, Rat:S2472. The name of modified sites may be influenced by many factors, such as species (the modified site was not originally found in human samples) and the change of protein sequence (the previous protein sequence is incomplete, and the protein sequence may be prolonged with the development of protein sequencing technology). When naming, we will use the "numbers" in historical reference to keep the sites consistent with the reports. The antibody binds to the following modification sequence (lowercase letters are modification sites):DDsDE
Formulation	Liquid in PBS containing 50% glycerol, 0.5% BSA and 0.02% sodium azide.
Source	Polyclonal, Rabbit,IgG
Purification	The antibody was affinity-purified from rabbit serum by affinity-chromatography using specific immunogen.
Dilution	IHC 1:50-200; WB 1:500-2000; IF 1:50-200 Note: For IHC, we suggest antigen retrieval with TE buffer pH 9.0 (Cat#YS0004)
Concentration	1 mg/ml
Purity	≥90%
Storage Stability	-20°C/1 year
Synonyms	IGF2R ;MPRI ;Cation-independent mannose-6-phosphate receptor ;CI Man-6-P receptor ;CI-MPR ;M6PR ;300 kDa mannose 6-phosphate receptor ;MPR 300 ;Insulin-like growth factor 2 receptor ;Insulin-like growth factor II receptor ;IGF-II receptor ;M6P/IGF2 receptor ;M6P/IGF2R ;CD222
Observed Band	300kD
Calculated Molecular Weight	
Cell Pathway	Golgi apparatus membrane ; Single-pass type I membrane protein . Endosome membrane ; Single-pass type I membrane protein . Mainly localized in the Golgi at steady state and not detectable in lysosome (PubMed:18817523) . Colocalized with DPP4 in internalized cytoplasmic vesicles adjacent to the cell surface (PubMed:10900005) . .



Tissue Specificity

Brain ,Epithelium ,Liver ,

Function

Domain:Contains 15 repeating units of approximately 147 AA. The most highly conserved region within the repeat consists of a stretch of 13 AA that contains cysteines at both ends. ,Function:Transport of phosphorylated lysosomal enzymes from the Golgi complex and the cell surface to lysosomes. Lysosomal enzymes bearing phosphomannosyl residues bind specifically to mannose-6-phosphate receptors in the Golgi apparatus and the resulting receptor-ligand complex is transported to an acidic prelysosomal compartment where the low pH mediates the dissociation of the complex. This receptor also binds IGF2. ,similarity:Belongs to the MRL1/IGF2R family. ,similarity:Contains 1 fibronectin type-II domain. ,subunit:Binds GGA1 , GGA2 and GGA3. ,

Background

This gene encodes a receptor for both insulin-like growth factor 2 and mannose 6-phosphate. The binding sites for each ligand are located on different segments of the protein. This receptor has various functions , including in the intracellular trafficking of lysosomal enzymes , the activation of transforming growth factor beta , and the degradation of insulin-like growth factor 2. Mutation or loss of heterozygosity of this gene has been association with risk of hepatocellular carcinoma. The orthologous mouse gene is imprinted and shows exclusive expression from the maternal allele; however , imprinting of the human gene may be polymorphic , as only a minority of individuals showed biased expression from the maternal allele (PMID:8267611) . [provided by RefSeq , Nov 2015] ,

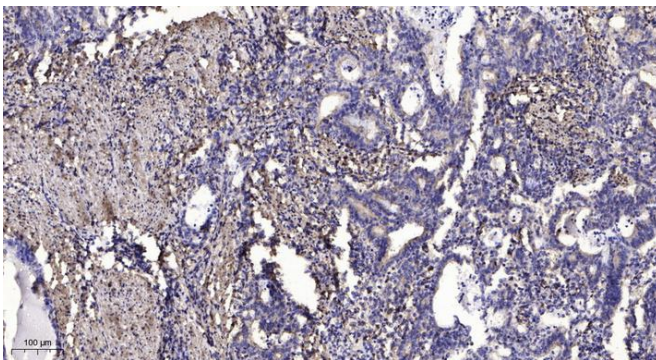
matters needing attention

Avoid repeated freezing and thawing!

Usage suggestions

This product can be used in immunological reaction related experiments. For more information, please consult technical personnel.

Products Images



Immunohistochemical analysis of paraffin-embedded human Gastric adenocarcinoma. 1, Antibody was diluted at 1:200 (4°C overnight). 2, Tris-EDTA,pH9.0 was used for antigen retrieval. 3,Secondary antibody was diluted at 1:200 (room temperature, 45min).