



ALP Rabbit pAb

Catalog No	YP-Ab-19379
Isotype	IgG
Reactivity	Human,Mouse,Rat
Applications	WB、IHC
Gene Name	ALP
Protein Name	PDLI3
Immunogen	Synthesized peptide derived from human ALP AA range: 251-301
Specificity	This antibody detects endogenous levels of ALP at Human/Mouse/Rat
Formulation	Liquid in PBS containing 50% glycerol, 0.5% BSA and 0.02% sodium azide.
Source	Polyclonal, Rabbit,IgG
Purification	The antibody was affinity-purified from rabbit antiserum by affinity-chromatography using epitope-specific immunogen.
Dilution	WB 1:500-2000; IHC 1:50-300 Note: For IHC, we suggest antigen retrieval with TE buffer pH 9.0 (Cat#YS0004)
Concentration	1 mg/ml
Purity	≥90%
Storage Stability	-20°C/1 year
Synonyms	PDLIM3
Observed Band	
Calculated Molecular Weight	40kD
Cell Pathway	Cytoplasm , myofibril , sarcomere , Z line . Localizes to myofiber Z-lines.
Tissue Specificity	Isoform 1 is highly expressed in differentiated skeletal muscle. Isoform 2 is heart-specific.
Function	Disease:Quantitative or qualitative alterations of expression have not been detected in facioscapulohumeral muscular dystrophy (FSHD) . ,Function:May play a role in the organization of actin filament arrays within muscle cells. ,similarity:Contains 1 LIM zinc-binding domain. ,similarity:Contains 1 PDZ (DHR) domain. ,subcellular location:Localizes to myofiber Z-lines. ,subunit:Interacts with ACTN2. ,tissue specificity:Isoform 1 is highly expressed in differentiated skeletal muscle. Isoform 2 is heart-specific. ,
Background	The protein encoded by this gene contains a PDZ domain and a LIM domain , indicating that it may be involved in cytoskeletal assembly. In support of this , the encoded protein has been shown to bind the spectrin-like repeats of alpha-actinin-2 and to colocalize with alpha-actinin-2 at the Z lines of skeletal muscle. Alternatively spliced transcript variants encoding multiple isoforms have



been observed for this gene. Aberrant alternative splicing of this gene may play a role in myotonic dystrophy. [provided by RefSeq , Apr 2012] ,

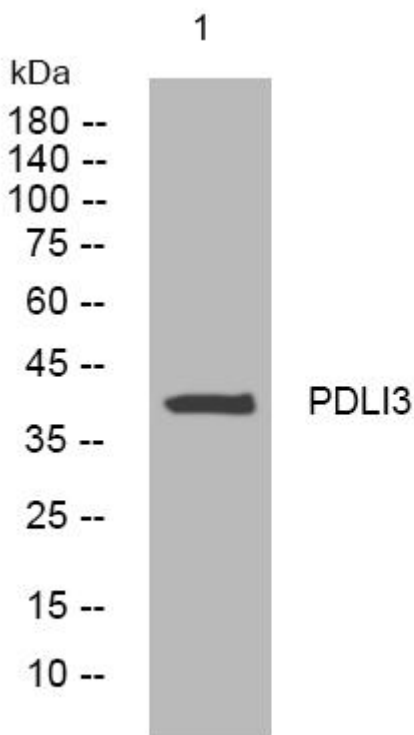
matters needing attention

Avoid repeated freezing and thawing!

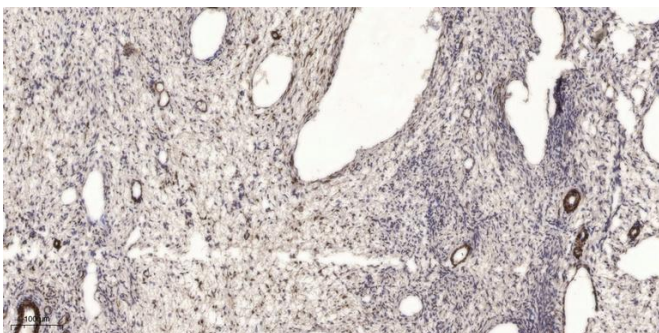
Usage suggestions

This product can be used in immunological reaction related experiments. For more information, please consult technical personnel.

Products Images



Western blot analysis of lysates from HEK293 cells, primary antibody was diluted at 1:1000, 4°C over night



Immunohistochemical analysis of paraffin-embedded human oophoroma. 1, Antibody was diluted at 1:200 (4°C overnight). 2, Tris-EDTA, pH9.0 was used for antigen retrieval. 3, Secondary antibody was diluted at 1:200 (room temperature, 45min).