



GLTL4 rabbit pAb

Catalog No	YP-Ab-08298
Isotype	IgG
Reactivity	Human; Mouse
Applications	WB
Gene Name	GALNTL4
Protein Name	GLTL4
Immunogen	Synthesized peptide derived from human GLTL4 AA range: 144-194
Specificity	This antibody detects endogenous levels of GLTL4 at Human/Mouse
Formulation	Liquid in PBS containing 50% glycerol, 0.5% BSA and 0.02% sodium azide.
Source	Polyclonal, Rabbit,IgG
Purification	The antibody was affinity-purified from rabbit serum by affinity-chromatography using specific immunogen.
Dilution	WB 1: 500-2000
Concentration	1 mg/ml
Purity	≥90%
Storage Stability	-20°C/1 year
Synonyms	
Observed Band	67kD
Cell Pathway	Golgi apparatus membrane ; Single-pass type II membrane protein .
Tissue Specificity	
Function	catalytic activity:UDP-N-acetyl-D-galactosamine + polypeptide = UDP + N-acetyl-D-galactosaminy-polypeptide.,cofactor:Calcium.,cofactor:Manganese.,domain:The ricin B-type lectin domain binds to GalNAc and contributes to the glycopeptide specificity.,domain:There are two conserved domains in the glycosyltransferase region: the N-terminal domain (domain A, also called GT1 motif), which is probably involved in manganese coordination and substrate binding and the C-terminal domain (domain B, also called Gal/GalNAc-T motif), which is probably involved in catalytic reaction and UDP-Gal binding.,function:May catalyze the initial reaction in O-linked oligosaccharide biosynthesis, the transfer of an N-acetyl-D-galactosamine residue to a serine or threonine residue on the protein receptor.,online information:GlycoGene database,pathway:Protein modification; protein glycosylation.,similarity:Belongs
Background	



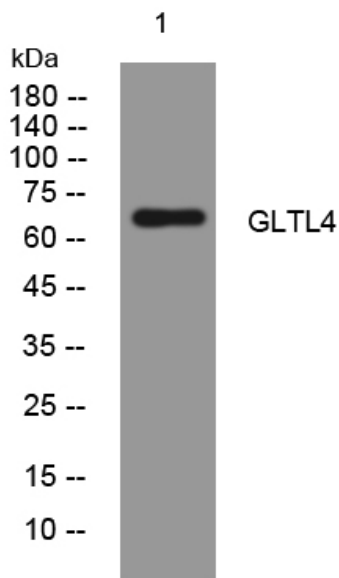
matters needing attention

Avoid repeated freezing and thawing!

Usage suggestions

This product can be used in immunological reaction related experiments. For more information, please consult technical personnel.

Products Images



Western blot analysis of lysates from U2OS cells, primary antibody was diluted at 1:1000, 4° over night