



CDA Mouse mAb

Catalog No	YP-mAb-19373
Isotype	IgG
Reactivity	Human,Mouse,Rat
Applications	WB
Gene Name	
Protein Name	
Immunogen	Recombinant protein (or fragment).This information is considered to be commercially sensitive.
Specificity	
Formulation	
Source	Monoclonal,Mouse,IgG
Purification	Affinity purification
Dilution	WB 1:500-2000
Concentration	1 mg/ml
Purity	≥90%
Storage Stability	-20°C/1 year
Synonyms	CDD; CDA
Observed Band	16 kDa
Calculated Molecular Weight	16 kDa
Cell Pathway	[Isoform 1]: Cell membrane ; Peripheral membrane protein. Endoplasmic reticulum membrane ; Peripheral membrane protein. Microsome membrane ; Peripheral membrane protein. Mitochondrion membrane ; Peripheral membrane protein. Cell projection, neuron projection . Predominantly associates with endoplasmic reticulum membranes. Only a small fraction associates with mitochondrial and plasma membranes. . ; [Isoform 2]: Mitochondrion inner membrane ; Peripheral membrane protein. Mitochondrion outer membrane ; Peripheral membrane protein. Lysosome lumen . According to PubMed:15213228, isoform 2 is soluble, N-glycosylated and found in the lumen of lysosomes. However, no signal sequence nor N-glycosylation site is predicted from the sequence.
Tissue Specificity	[Isoform 1]: Predominant form in liver. Also expressed in brain, kidney and colon. ; [Isoform 2]: Highly expressed in brain and at lower levels in kidney and liver.
Function	Exo-alpha-sialidase that catalyzes the hydrolytic cleavage of the terminal sialic acid (N-acetylneuraminic acid, Neu5Ac) of a glycan moiety in the catabolism of glycolipids, glycoproteins and oligosaccharides. Efficiently hydrolyzes gangliosides including alpha-(2->3)-sialylated GD1a and GM3 and alpha-(2->8)-sialylated GD3



. Hydrolyzes poly-alpha-(2->8)-sialylated neural cell adhesion molecule NCAM1 likely at growth cones, suppressing neurite outgrowth in hippocampal neurons (By similarity). May desialylate sialyl Lewis A and X antigens at the cell surface, down-regulating these glycan epitopes recognized by SELE/E selectin in the initiation of cell adhesion and extravasation . Has sialidase activity toward mucin, fetuin and sialyllactose .

Background

This gene encodes an enzyme involved in pyrimidine salvaging. The encoded protein forms a homotetramer that catalyzes the irreversible hydrolytic deamination of cytidine and deoxycytidine to uridine and deoxyuridine, respectively. It is one of several deaminases responsible for maintaining the cellular pyrimidine pool. Mutations in this gene are associated with decreased sensitivity to the cytosine nucleoside analogue cytosine arabinoside used in the treatment of certain childhood leukemias.

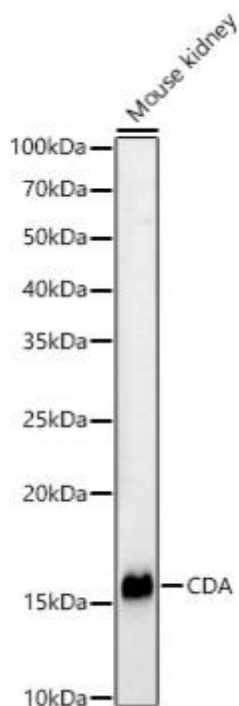
matters needing attention

Avoid repeated freezing and thawing!

Usage suggestions

This product can be used in immunological reaction related experiments. For more information, please consult technical personnel.

Products Images



Western blot analysis of lysates from Mouse kidney, using CDA Mouse mAb (A2006) at 1:400 dilution. Secondary antibody: HRP-conjugated Goat anti-Mouse IgG (H+L) (AS014) at 1:10000 dilution. Lysates/proteins: 25μ g per lane. Blocking buffer: 3% nonfat dry milk in TBST. Detection: ECL Basic Kit (RM00020). Exposure time: 180s.