



GH1 Mouse mAb

Catalog No	YP-mAb-19372
Isotype	IgG
Reactivity	Human,Mouse,Rat
Applications	WB
Gene Name	
Protein Name	
Immunogen	Synthetic peptide. This information is considered to be commercially sensitive.
Specificity	
Formulation	
Source	Monoclonal,Mouse,IgG
Purification	Affinity purification
Dilution	WB 1:500-2000
Concentration	1 mg/ml
Purity	≥90%
Storage Stability	-20°C/1 year
Synonyms	GH; GHN; GH-N; GHB5; IGHD2; hGH-N; IGHD1A; IGHD1B; GH1
Observed Band	23kDa
Calculated Molecular Weight	25kDa
Cell Pathway	[Isoform 1]: Cell membrane ; Peripheral membrane protein. Endoplasmic reticulum membrane ; Peripheral membrane protein. Microsome membrane ; Peripheral membrane protein. Mitochondrion membrane ; Peripheral membrane protein. Cell projection, neuron projection . Predominantly associates with endoplasmic reticulum membranes. Only a small fraction associates with mitochondrial and plasma membranes. . ; [Isoform 2]: Mitochondrion inner membrane ; Peripheral membrane protein. Mitochondrion outer membrane ; Peripheral membrane protein. Lysosome lumen . According to PubMed:15213228, isoform 2 is soluble, N-glycosylated and found in the lumen of lysosomes. However, no signal sequence nor N-glycosylation site is predicted from the sequence.
Tissue Specificity	[Isoform 1]: Predominant form in liver. Also expressed in brain, kidney and colon. ; [Isoform 2]: Highly expressed in brain and at lower levels in kidney and liver.
Function	Exo-alpha-sialidase that catalyzes the hydrolytic cleavage of the terminal sialic acid (N-acetylneuraminic acid, Neu5Ac) of a glycan moiety in the catabolism of glycolipids, glycoproteins and oligosaccharides. Efficiently hydrolyzes gangliosides including alpha-(2->3)-sialylated GD1a and GM3 and alpha-(2->8)-sialylated GD3 . Hydrolyzes poly-alpha-(2->8)-sialylated neural cell adhesion molecule NCAM1



likely at growth cones, suppressing neurite outgrowth in hippocampal neurons (By similarity). May desialylate sialyl Lewis A and X antigens at the cell surface, down-regulating these glycan epitopes recognized by SELE/E selectin in the initiation of cell adhesion and extravasation . Has sialidase activity toward mucin, fetuin and sialyllactose .

Background

The protein encoded by this gene is a member of the somatotropin/prolactin family of hormones which play an important role in growth control. The gene, along with four other related genes, is located at the growth hormone locus on chromosome 17 where they are interspersed in the same transcriptional orientation; an arrangement which is thought to have evolved by a series of gene duplications. The five genes share a remarkably high degree of sequence identity. Alternative splicing generates additional isoforms of each of the five growth hormones, leading to further diversity and potential for specialization. This particular family member is expressed in the pituitary but not in placental tissue as is the case for the other four genes in the growth hormone locus. Mutations in or deletions of the gene lead to growth hormone deficiency and short stature.

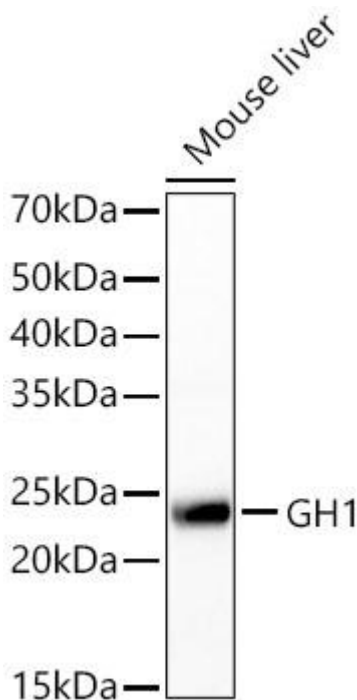
matters needing attention

Avoid repeated freezing and thawing!

Usage suggestions

This product can be used in immunological reaction related experiments. For more information, please consult technical personnel.

Products Images



Western blot analysis of lysates from Mouse liver using GH1 Mouse mAb (A7675) at 1:700 dilution. Secondary antibody: HRP-conjugated Goat anti-Mouse IgG (H+L) (AS014) at 1:10000 dilution. Lysates/proteins: 25 μ g per lane. Blocking buffer: 3% nonfat dry milk in TBST. Detection: ECL Basic Kit (RM00020). Exposure time:10s