



## Hsp60 mouse mAb

<b>Catalog No</b>	YP-mAb-03474
<b>Isotype</b>	IgG
<b>Reactivity</b>	Human;Mouse;Rat
<b>Applications</b>	WB
<b>Gene Name</b>	hsp60
<b>Protein Name</b>	
<b>Immunogen</b>	Purified recombinant human Hsp60 protein fragments expressed in E.coli.
<b>Specificity</b>	This antibody detects endogenous levels of Hsp60 and does not cross-react with related proteins.
<b>Formulation</b>	Liquid in PBS containing 50% glycerol, 0.5% BSA and 0.02% sodium azide.
<b>Source</b>	Monoclonal, Mouse
<b>Purification</b>	The antibody was affinity-purified from mouse ascites by affinity-chromatography using epitope-specific immunogen.
<b>Dilution</b>	wb dilution 1:1000
<b>Concentration</b>	1 mg/ml
<b>Purity</b>	≥90%
<b>Storage Stability</b>	-20°C/1 year
<b>Synonyms</b>	60 kDa chaperonin;60 kDa heat shock protein mitochondrial;60 kDa heat shock protein, mitochondrial;CH60_HUMAN;Chaperonin 60;Chaperonin;Chaperonin, 60-KD;CPN 60;CPN60;fa04a05;GROEL;GroEL Homolog;Heat shock 60kD protein 1 chaperonin;Heat shock 60kDa protein 1;Heat shock protein 1 (chaperonin);Heat Shock Protein 60;Heat shock protein 65;HLD4;Hsp 60;HSP 65;HSP-60;HSP60;HSP65;HSPD 1;HSPD1;HuCHA60;Mitochondrial matrix protein P1;P60 lymphocyte protein;Short heat shock protein 60 Hsp60s1;Spastic paraplegia 13;SPG 13;SPG13.
<b>Observed Band</b>	60kD
<b>Cell Pathway</b>	Mitochondrion matrix.
<b>Tissue Specificity</b>	Adipocyte,Adrenal gland,B-cell lymphoma,Brain,Cajal-Retzius
<b>Function</b>	disease:Defects in HSPD1 are a cause of spastic paraplegia autosomal dominant type 13 (SPG13) [MIM:605280]. Spastic paraplegia is a degenerative spinal cord disorder characterized by a slow, gradual, progressive weakness and spasticity of the lower limbs.,disease:Defects in HSPD1 are the cause of leukodystrophy hypomyelinating type 4 (HLD4) [MIM:612233]; also called mitochondrial HSP60 chaperonopathy or MitCHAP-60 disease. HLD4 is a severe autosomal recessive



hypomyelinating leukodystrophy. Clinically characterized by infantile-onset rotary nystagmus, progressive spastic paraplegia, neurologic regression, motor impairment, profound mental retardation. Death usually occurs within the first 2 decades of life. function: Implicated in mitochondrial protein import and macromolecular assembly. May facilitate the correct folding of imported proteins. May also prevent misfolding and promote the

### Background

This gene encodes a member of the chaperonin family. The encoded mitochondrial protein may function as a signaling molecule in the innate immune system. This protein is essential for the folding and assembly of newly imported proteins in the mitochondria. This gene is adjacent to a related family member and the region between the 2 genes functions as a bidirectional promoter. Several pseudogenes have been associated with this gene. Two transcript variants encoding the same protein have been identified for this gene. Mutations associated with this gene cause autosomal recessive spastic paraplegia 13. [provided by RefSeq, Jun 2010],

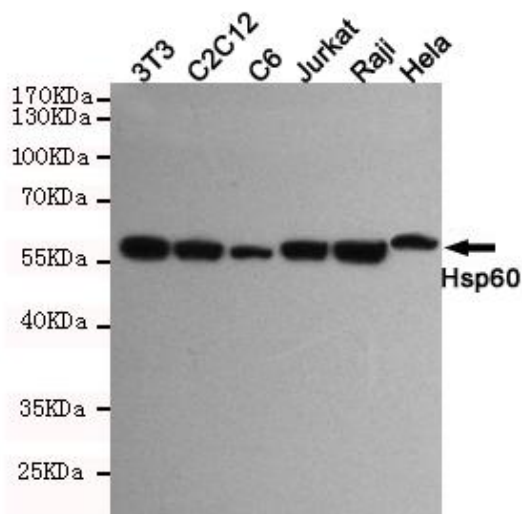
### matters needing attention

Avoid repeated freezing and thawing!

### Usage suggestions

This product can be used in immunological reaction related experiments. For more information, please consult technical personnel.

## Products Images



Western blot detection of Hsp60 in HeLa, Raji, Jurkat, C6, C2C12 and 3T3 cell lysates using Hsp60 mouse mAb (1:1000 diluted). Predicted band size: 60KDa. Observed band size: 60KDa.