



CSAD rabbit pAb

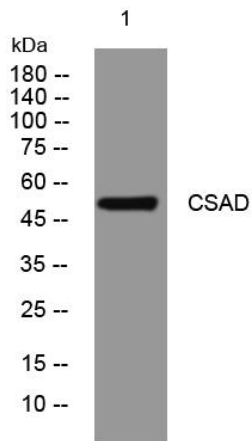
Catalog No	YP-Ab-12334
Isotype	IgG
Reactivity	Human; Mouse;Rat
Applications	WB
Gene Name	CSAD CSD
Protein Name	CSAD
Immunogen	Synthesized peptide derived from human CSAD AA range: 195-245
Specificity	This antibody detects endogenous levels of CSAD at Human/Mouse/Rat
Formulation	Liquid in PBS containing 50% glycerol, 0.5% BSA and 0.02% sodium azide.
Source	Polyclonal, Rabbit,IgG
Purification	The antibody was affinity-purified from rabbit serum by affinity-chromatography using specific immunogen.
Dilution	WB 1: 500-2000
Concentration	1 mg/ml
Purity	≥90%
Storage Stability	-20°C/1 year
Synonyms	
Observed Band	54kD
Cell Pathway	
Tissue Specificity	Expressed in liver and brain. Also expressed in both astrocytes and neurons, but lower levels are expressed in astrocytes.
Function	catalytic activity:3-sulfino-L-alanine = hypotaurine + CO(2).,cofactor:Pyridoxal phosphate.,pathway:Organosulfur biosynthesis; taurine biosynthesis; hypotaurine from L-cysteine: step 2/2.,similarity:Belongs to the group II decarboxylase family.,subunit:Homodimer.,
Background	This gene encodes a member of the group 2 decarboxylase family. A similar protein in rodents plays a role in multiple biological processes as the rate-limiting enzyme in taurine biosynthesis, catalyzing the decarboxylation of cysteinesulfinate to hypotaurine. Alternatively spliced transcript variants encoding multiple isoforms have been observed for this gene. [provided by RefSeq, Sep 2011],
matters needing attention	Avoid repeated freezing and thawing!



Usage suggestions

This product can be used in immunological reaction related experiments. For more information, please consult technical personnel.

Products Images



Western blot analysis of lysates from HeLa cells,
primary antibody was diluted at 1:1000, 4° over night