



# FTMT rabbit pAb

<b>Catalog No</b>	YP-Ab-09067
<b>Isotype</b>	IgG
<b>Reactivity</b>	Human; Mouse
<b>Applications</b>	WB
<b>Gene Name</b>	FTMT
<b>Protein Name</b>	FTMT
<b>Immunogen</b>	Synthesized peptide derived from human FTMT AA range: 129-179
<b>Specificity</b>	This antibody detects endogenous levels of FTMT at Human/Mouse
<b>Formulation</b>	Liquid in PBS containing 50% glycerol, 0.5% BSA and 0.02% sodium azide.
<b>Source</b>	Polyclonal, Rabbit,IgG
<b>Purification</b>	The antibody was affinity-purified from rabbit serum by affinity-chromatography using specific immunogen.
<b>Dilution</b>	WB 1: 500-2000
<b>Concentration</b>	1 mg/ml
<b>Purity</b>	≥90%
<b>Storage Stability</b>	-20°C/1 year
<b>Synonyms</b>	
<b>Observed Band</b>	27kD
<b>Cell Pathway</b>	Mitochondrion .
<b>Tissue Specificity</b>	Detected in testis and erythroleukemia. Expression is very low or not detectable in brain, colon, heart, kidney, liver, lung, muscle, placental, spleen and small intestine.
<b>Function</b>	catalytic activity:4 Fe(2+) + 4 H(+) + O(2) = 4 Fe(3+) + 2 H(2)O.,function:Stores iron in a soluble, non-toxic, readily available form. Important for iron homeostasis. Has ferroxidase activity. Iron is taken up in the ferrous form and deposited as ferric hydroxides after oxidation.,online information:Ferritin entry,similarity:Belongs to the ferritin family.,similarity:Contains 1 ferritin-like diiron domain.,subunit:Homo-oligomer of 24 subunits. The functional molecule is roughly spherical and contains a central cavity into which the polymeric mineral iron core is deposited.,tissue specificity:Detected in testis and erythroleukemia. Expression is very low or not detectable in brain, colon, heart, kidney, liver, lung, muscle, placental, spleen and small intestine.,
<b>Background</b>	



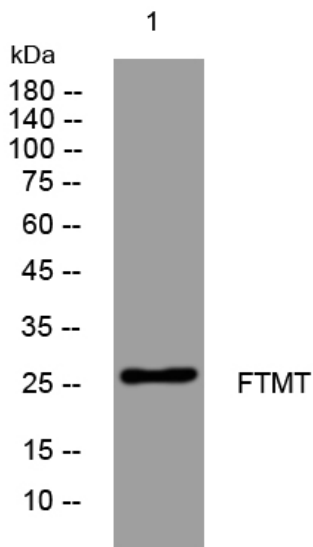
**matters needing attention**

Avoid repeated freezing and thawing!

**Usage suggestions**

This product can be used in immunological reaction related experiments. For more information, please consult technical personnel.

## Products Images



Western blot analysis of lysates from VEC cells, primary antibody was diluted at 1:1000, 4° over night