



# Integrin $\alpha$ 5 Monoclonal Antibody

<b>Catalog No</b>	YP-Ab-16836
<b>Isotype</b>	IgG
<b>Reactivity</b>	Human
<b>Applications</b>	WB;IHC;IF;FCM;ELISA
<b>Gene Name</b>	ITGA5
<b>Protein Name</b>	Integrin alpha-5
<b>Immunogen</b>	Purified recombinant fragment of human Integrin $\alpha$ 5 expressed in E. Coli.
<b>Specificity</b>	Integrin $\alpha$ 5 Monoclonal Antibody detects endogenous levels of Integrin $\alpha$ 5 protein.
<b>Formulation</b>	Ascitic fluid containing 0.03% sodium azide,0.5% BSA, 50%glycerol.
<b>Source</b>	Monoclonal, Mouse
<b>Purification</b>	Affinity purification
<b>Dilution</b>	WB: 1/500 - 1/2000. IHC: 1/200 - 1/1000. Flow cytometry: 1/200 - 1/400. ELISA: 1/10000.. IF 1:50-200
<b>Concentration</b>	1 mg/ml
<b>Purity</b>	$\geq$ 90%
<b>Storage Stability</b>	-20°C/1 year
<b>Synonyms</b>	ITGA5; FNRA; Integrin alpha-5; CD49 antigen-like family member E; Fibronectin receptor subunit alpha; Integrin alpha-F; VLA-5; CD antigen CD49e
<b>Observed Band</b>	115kD
<b>Cell Pathway</b>	Membrane; Single-pass type I membrane protein. Cell junction, focal adhesion . Cell surface .
<b>Tissue Specificity</b>	Liver,Placenta,
<b>Function</b>	function:Integrin alpha-5/beta-1 is a receptor for fibronectin and fibrinogen. It recognizes the sequence R-G-D in its ligands. In case of HIV-1 infection, the interaction with extracellular viral Tat protein seems to enhance angiogenesis in Kaposi's sarcoma lesions.,similarity:Belongs to the integrin alpha chain family.,similarity:Contains 7 FG-GAP repeats.,subunit:Heterodimer of an alpha and a beta subunit. The alpha subunit is composed of an heavy and a light chain linked by a disulfide bond. Alpha-5 associates with beta-1. Interacts with HPS5 and NISCH. Interacts with HIV-1 Tat. Interacts with RAB21.,
<b>Background</b>	integrin subunit alpha 5(ITGA5) Homo sapiens The product of this gene belongs to the integrin alpha chain family. Integrins are heterodimeric integral membrane proteins composed of an alpha subunit and a beta subunit that function in cell surface adhesion and signaling. The encoded preproprotein is proteolytically processed to generate light and heavy chains that comprise the alpha 5 subunit. This subunit associates with the beta 1 subunit to form a fibronectin receptor. This integrin may promote tumor invasion, and higher



expression of this gene may be correlated with shorter survival time in lung cancer patients. Note that the integrin alpha 5 and integrin alpha V subunits are encoded by distinct genes. [provided by RefSeq, Oct 2015],

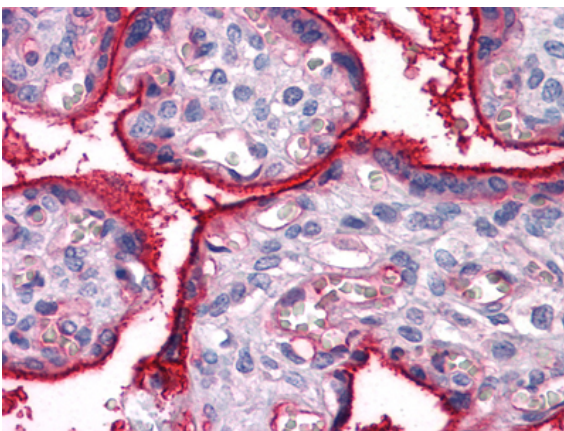
**matters needing attention**

Avoid repeated freezing and thawing!

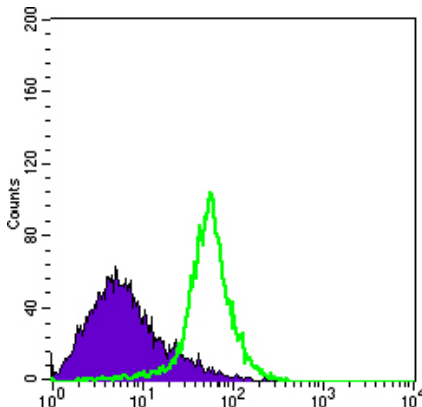
**Usage suggestions**

This product can be used in immunological reaction related experiments. For more information, please consult technical personnel.

**Products Images**



Immunohistochemistry analysis of paraffin-embedded human Placenta tissues with AEC staining using Integrin  $\alpha 5$  Monoclonal Antibody.



Flow cytometric analysis of HeLa cells using Integrin  $\alpha 5$  Monoclonal Antibody (green) and negative control (purple).