



# RND2 Monoclonal Antibody

<b>Catalog No</b>	YP-mAb-06101
<b>Isotype</b>	IgG
<b>Reactivity</b>	Human;Mouse;Rat
<b>Applications</b>	WB
<b>Gene Name</b>	RND2 ARHN RHO7
<b>Protein Name</b>	Rho-related GTP-binding protein RhoN (Rho family GTPase 2) (Rho-related GTP-binding protein Rho7) (Rnd2)
<b>Immunogen</b>	Synthesized peptide derived from human protein . at AA range: 140-220
<b>Specificity</b>	RND2 Monoclonal Antibody detects endogenous levels of protein.
<b>Formulation</b>	Liquid in PBS containing 50% glycerol, and 0.02% sodium azide.
<b>Source</b>	Monoclonal, Mouse,IgG
<b>Purification</b>	The antibody was affinity-purified from mouse antiserum by affinity-chromatography using epitope-specific immunogen.
<b>Dilution</b>	WB 1:500-1:2000
<b>Concentration</b>	1 mg/ml
<b>Purity</b>	≥90%
<b>Storage Stability</b>	-20°C/1 year
<b>Synonyms</b>	
<b>Observed Band</b>	24kD
<b>Cell Pathway</b>	Cytoplasmic vesicle, secretory vesicle, acrosome membrane ; Lipid-anchor ; Cytoplasmic side . Colocalizes with RACGAP1 in Golgi-derived proacrosomal vesicles and the acrosome. .
<b>Tissue Specificity</b>	Highly expressed in testis.
<b>Function</b>	function:May be specifically involved in neuronal and hepatic functions. Is a C3 toxin-insensitive member of the Rho subfamily.,similarity:Belongs to the small GTPase superfamily. Rho family.,subcellular location:Colocalizes with RACGAP1 in Golgi-derived proacrosomal vesicles and the acrosome.,subunit:Interacts with the Rho-GAP domain of RACGAP1. Interacts with UBXD5.,tissue specificity:Highly expressed in testis.,
<b>Background</b>	This gene encodes a member of the Rho GTPase family, whose members play a key role in the regulation of actin cytoskeleton organization in response to extracellular growth factors. This particular family member has been implicated in the regulation of neuronal morphology and endosomal trafficking. The gene localizes to chromosome 17 and is the centromeric neighbor of the breast-ovarian cancer susceptibility gene BRCA1. [provided by RefSeq, Jul 2008],



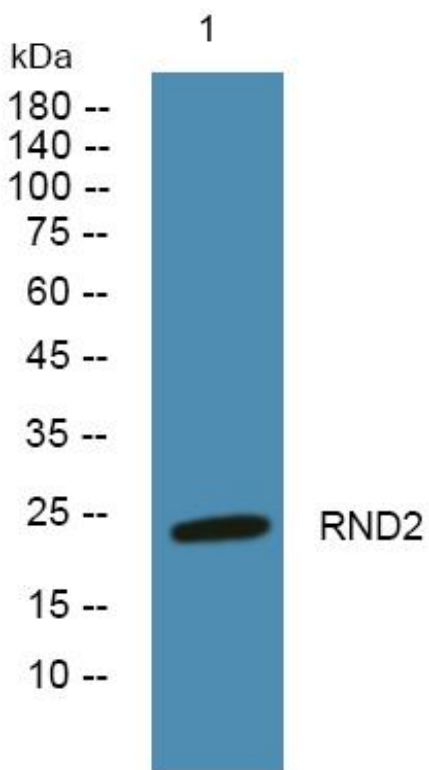
**matters needing attention**

Avoid repeated freezing and thawing!

**Usage suggestions**

This product can be used in immunological reaction related experiments. For more information, please consult technical personnel.

## Products Images



Western Blot analysis of various cells using RND2 Monoclonal Antibody