



Prealbumin rabbit pAb

Catalog No	YP-Ab-12439
Isotype	IgG
Reactivity	Human;Rat;Mouse;
Applications	WB;IHC
Gene Name	TTR PALB
Protein Name	Prealbumin
Immunogen	Synthesized peptide derived from human Prealbumin AA range: 81-130
Specificity	This antibody detects endogenous levels of Human Prealbumin
Formulation	Liquid in PBS containing 50% glycerol, 0.5% BSA and 0.02% sodium azide.
Source	Polyclonal, Rabbit,IgG
Purification	The antibody was affinity-purified from rabbit serum by affinity-chromatography using specific immunogen.
Dilution	WB 1:500-2000;IHC-p 1:50-300
Concentration	1 mg/ml
Purity	≥90%
Storage Stability	-20°C/1 year
Synonyms	Transthyretin (ATTR;Prealbumin;TBPA)
Observed Band	16kDa
Cell Pathway	Secreted. Cytoplasm.
Tissue Specificity	Detected in serum and cerebrospinal fluid (at protein level). Highly expressed in choroid plexus epithelial cells. Detected in retina pigment epithelium and liver.
Function	disease:Defects in TTR are a cause of hyperthyroxinemia [MIM:176300].,disease:Defects in TTR are the cause of amyloidosis type 1 (AMYL1) [MIM:176300]. AMYL1 is a hereditary generalized amyloidosis due to transthyretin amyloid deposition. Protein fibrils can form in different tissues leading to amyloid polyneuropathies, amyloidotic cardiomyopathy, carpal tunnel syndrome, systemic senile amyloidosis.,disease:Defects in TTR are the cause of amyloidosis type 7 (AMYL7) [MIM:105210]; also known as leptomenigeal amyloidosis or meningocerebrovascular amyloidosis. AMYL7 is a form of hereditary transthyretin amyloidosis characterized by primary involvement of the central nervous system. Neuropathologic examination shows amyloid in the walls of leptomenigeal vessels, in pia arachnoid, and subpial deposits. Some patients also develop vitreous amyloid deposition that leads to visual impairment (ocu
Background	This gene encodes transthyretin, one of the three prealbumins including alpha-1-antitrypsin, transthyretin and orosomucoid. Transthyretin is a carrier protein; it transports thyroid hormones in the plasma and cerebrospinal fluid, and



also transports retinol (vitamin A) in the plasma. The protein consists of a tetramer of identical subunits. More than 80 different mutations in this gene have been reported; most mutations are related to amyloid deposition, affecting predominantly peripheral nerve and/or the heart, and a small portion of the gene mutations is non-amyloidogenic. The diseases caused by mutations include amyloidotic polyneuropathy, euthyroid hyperthyroxinaemia, amyloidotic vitreous opacities, cardiomyopathy, oculoleptomeningeal amyloidosis, meningocerebrovascular amyloidosis, carpal tunnel syndrome, etc. [provided by RefSeq, Jan 2009],

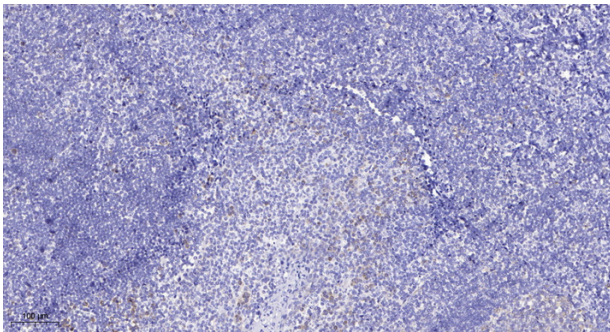
matters needing attention

Avoid repeated freezing and thawing!

Usage suggestions

This product can be used in immunological reaction related experiments. For more information, please consult technical personnel.

Products Images



Immunohistochemical analysis of paraffin-embedded human tonsil. 1, Antibody was diluted at 1:200(4° overnight). 2, Tris-EDTA,pH9.0 was used for antigen retrieval. 3,Secondary antibody was diluted at 1:200(room temperature, 45min).