



REG1A Mouse mAb

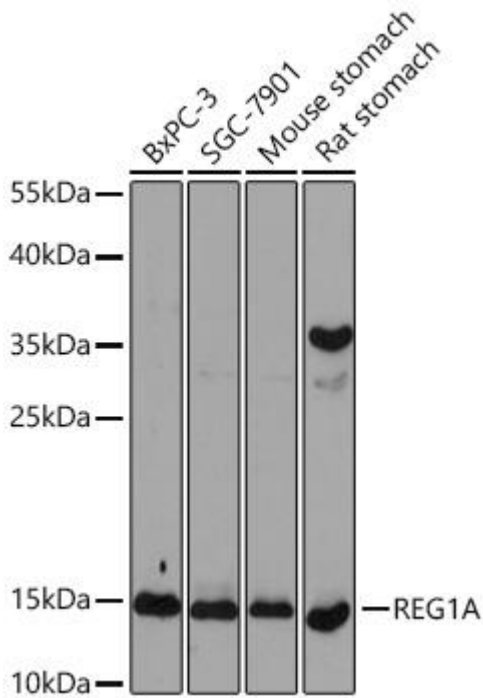
| | |
|------------------------------------|---|
| Catalog No | YP-mAb-19337 |
| Isotype | IgG |
| Reactivity | Human;Mouse;Rat |
| Applications | WB |
| Gene Name | |
| Protein Name | |
| Immunogen | Synthetic peptide. This information is considered to be commercially sensitive. |
| Specificity | |
| Formulation | |
| Source | Monoclonal,Mouse,IgG |
| Purification | Affinity purification |
| Dilution | WB 1:500-2000 |
| Concentration | 1 mg/ml |
| Purity | ≥90% |
| Storage Stability | -20°C/1 year |
| Synonyms | P19; PSP; PTP; REG; ICRF; PSPS; PSPS1; REG1A |
| Observed Band | 15kDa |
| Calculated Molecular Weight | 19kDa |
| Cell Pathway | |
| Tissue Specificity | |
| Function | |
| Background | This gene is a type I subclass member of the Reg gene family. The Reg gene family is a multigene family grouped into four subclasses, types I, II, III and IV, based on the primary structures of the encoded proteins. This gene encodes a protein that is secreted by the exocrine pancreas. It is associated with islet cell regeneration and diabetogenesis and may be involved in pancreatic lithogenesis. Reg family members REG1B, REGL, PAP and this gene are tandemly clustered on chromosome 2p12 and may have arisen from the same ancestral gene by gene duplication. |
| matters needing attention | Avoid repeated freezing and thawing! |



Usage suggestions

This product can be used in immunological reaction related experiments. For more information, please consult technical personnel.

Products Images



Western blot analysis of various lysates using REG1A Mouse mAb (A5327) at 1:1000 dilution incubated overnight at 4°C. Secondary antibody: HRP-conjugated Goat anti-Mouse IgG (H+L) (AS014) at 1:10000 dilution. Lysates/proteins: 25 µg per lane. Blocking buffer: 3% nonfat dry milk in TBST. Detection: ECL Basic Kit (RM00020). Exposure time: 90s.