

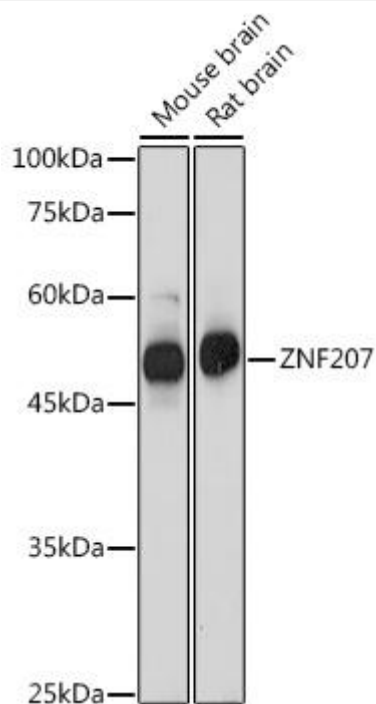


# ZNF207 Mouse mAb

<b>Catalog No</b>	YP-mAb-19334
<b>Isotype</b>	IgG
<b>Reactivity</b>	Human;Mouse;Rat
<b>Applications</b>	WB
<b>Gene Name</b>	
<b>Protein Name</b>	
<b>Immunogen</b>	Recombinant protein (or fragment).This information is considered to be commercially sensitive.
<b>Specificity</b>	
<b>Formulation</b>	
<b>Source</b>	Monoclonal,Mouse,IgG
<b>Purification</b>	Affinity purification
<b>Dilution</b>	WB 1:500-2000
<b>Concentration</b>	1 mg/ml
<b>Purity</b>	≥90%
<b>Storage Stability</b>	-20°C/1 year
<b>Synonyms</b>	BuGZ; hBuGZ; ZNF207
<b>Observed Band</b>	51kDa
<b>Calculated Molecular Weight</b>	51kDa
<b>Cell Pathway</b>	
<b>Tissue Specificity</b>	
<b>Function</b>	
<b>Background</b>	Enables microtubule binding activity. Involved in several processes, including mitotic nuclear division; mitotic spindle assembly checkpoint signaling; and protein stabilization. Located in kinetochore; nuclear lumen; and spindle matrix
<b>matters needing attention</b>	Avoid repeated freezing and thawing!
<b>Usage suggestions</b>	This product can be used in immunological reaction related experiments. For more information, please consult technical personnel.



## Products Images



Western blot analysis of various lysates using ZNF207 Mouse mAb (A20177) at 1:1000 dilution. Secondary antibody: HRP-conjugated Goat anti-Mouse IgG (H+L) (AS014) at 1:10000 dilution. Lysates/proteins: 25 $\mu$  g per lane. Blocking buffer: 3% nonfat dry milk in TBST. Detection: ECL Basic Kit (RM00020). Exposure time: 1s.