



# SMARCD3 Mouse mAb

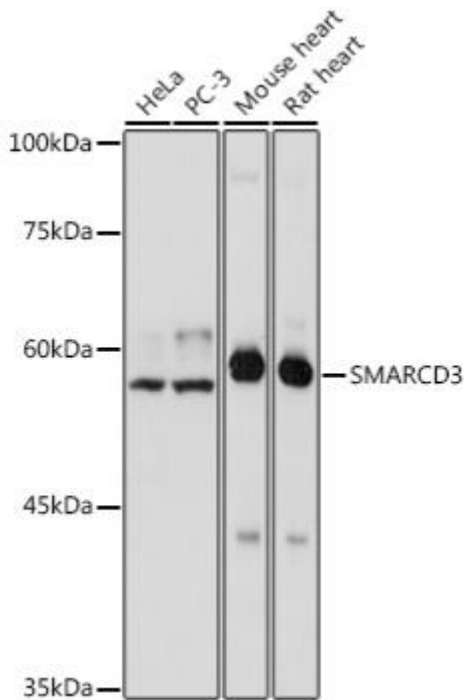
<b>Catalog No</b>	YP-mAb-19333
<b>Isotype</b>	IgG
<b>Reactivity</b>	Human;Mouse;Rat
<b>Applications</b>	WB
<b>Gene Name</b>	
<b>Protein Name</b>	
<b>Immunogen</b>	Recombinant protein (or fragment).This information is considered to be commercially sensitive.
<b>Specificity</b>	
<b>Formulation</b>	
<b>Source</b>	Monoclonal,Mouse,IgG
<b>Purification</b>	Affinity purification
<b>Dilution</b>	WB 1:500-2000
<b>Concentration</b>	1 mg/ml
<b>Purity</b>	≥90%
<b>Storage Stability</b>	-20°C/1 year
<b>Synonyms</b>	Rsc6p; BAF60C; CRACD3; SMARCD3
<b>Observed Band</b>	58kDa
<b>Calculated Molecular Weight</b>	55kDa
<b>Cell Pathway</b>	
<b>Tissue Specificity</b>	
<b>Function</b>	
<b>Background</b>	The protein encoded by this gene is a member of the SWI/SNF family of proteins, whose members display helicase and ATPase activities and which are thought to regulate transcription of certain genes by altering the chromatin structure around those genes. The encoded protein is part of the large ATP-dependent chromatin remodeling complex SNF/SWI and has sequence similarity to the yeast Swp73 protein. Multiple alternatively spliced transcript variants have been found for this gene, but the biological validity of some variants has not been determined.
<b>matters needing attention</b>	Avoid repeated freezing and thawing!



### Usage suggestions

This product can be used in immunological reaction related experiments. For more information, please consult technical personnel.

## Products Images



Western blot analysis of various lysates using SMARCD3 Mouse mAb (A20174) at 1:1000 dilution. Secondary antibody: HRP-conjugated Goat anti-Mouse IgG (H+L) (AS014) at 1:10000 dilution. Lysates/proteins: 25 $\mu$ g per lane. Blocking buffer: 3% nonfat dry milk in TBST. Detection: ECL Basic Kit (RM00020). Exposure time: 1s.