



SRSF10 Mouse mAb

Catalog No	YP-mAb-19330
Isotype	IgG
Reactivity	Human;Mouse;Rat
Applications	WB
Gene Name	
Protein Name	
Immunogen	Synthetic peptide. This information is considered to be commercially sensitive.
Specificity	
Formulation	
Source	Monoclonal,Mouse,IgG
Purification	Affinity purification
Dilution	WB 1:500-2000
Concentration	1 mg/ml
Purity	≥90%
Storage Stability	-20°C/1 year
Synonyms	NSSR; TASR; SRp38; TASR1; TASR2; FUSIP1; FUSIP2; SFRS13; SRrp40; SFRS13A; PPP1R149; SRSF10
Observed Band	40kDa
Calculated Molecular Weight	31kDa
Cell Pathway	
Tissue Specificity	
Function	
Background	This gene product is a member of the serine-arginine (SR) family of proteins, which are involved in constitutive and regulated RNA splicing. Members of this family are characterized by N-terminal RNP1 and RNP2 motifs, which are required for binding to RNA, and multiple C terminal SR/RS repeats, which are important in mediating association with other cellular proteins. This protein interacts with the oncoprotein TLS, and abrogates the influence of TLS on adenovirus E1A pre-mRNA splicing. This gene has pseudogenes on chromosomes 4, 9, 14, 18, and 20. Alternative splicing results in multiple transcript variants.



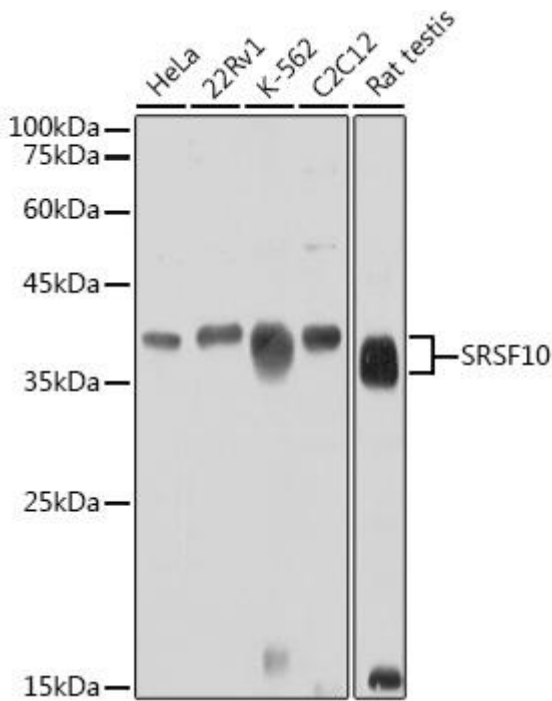
matters needing attention

Avoid repeated freezing and thawing!

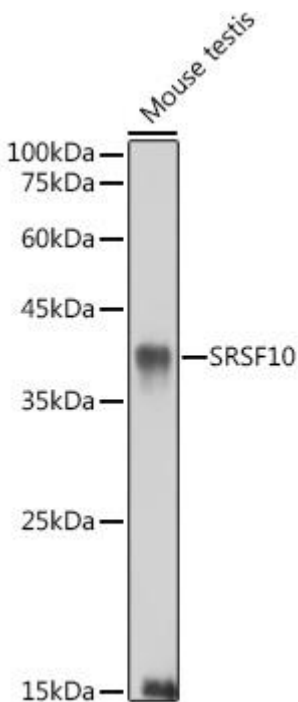
Usage suggestions

This product can be used in immunological reaction related experiments. For more information, please consult technical personnel.

Products Images



Western blot analysis of various lysates using SRSF10 mouse mAb (A6024) at 1:1000 dilution. Secondary antibody: HRP-conjugated Goat anti-mouse IgG (H+L) (AS014) at 1:10000 dilution. Lysates/proteins: 25 μ g per lane. Blocking buffer: 3% nonfat dry milk in TBST. Detection: ECL Basic Kit (RM00020). Exposure time: 30s



Western blot analysis of lysates from Mouse testis, using SRSF10 mouse mAb (A6024) at 1:1000 dilution. Secondary antibody: HRP-conjugated Goat anti-mouse IgG (H+L) (AS014) at 1:10000 dilution. Lysates/proteins: 25 μ g per lane. Blocking buffer: 3% nonfat dry milk in TBST. Detection: ECL Basic Kit (RM00020). Exposure time: 90s.