



SYF1 rabbit pAb

Catalog No	YP-Ab-11885
Isotype	IgG
Reactivity	Human; Mouse;Rat
Applications	WB;ELISA;IHC
Gene Name	XAB2 HCNP KIAA1177 SYF1 PP3898
Protein Name	SYF1
Immunogen	Synthesized peptide derived from human SYF1 AA range: 345-395
Specificity	This antibody detects endogenous levels of SYF1 at Human/Mouse/Rat
Formulation	Liquid in PBS containing 50% glycerol, 0.5% BSA and 0.02% sodium azide.
Source	Polyclonal, Rabbit,IgG
Purification	The antibody was affinity-purified from rabbit serum by affinity-chromatography using specific immunogen.
Dilution	WB 1:500-2000;IHC-p 1:50-300; ELISA 2000-20000
Concentration	1 mg/ml
Purity	≥90%
Storage Stability	-20°C/1 year
Synonyms	
Observed Band	94kD
Cell Pathway	Nucleus . Detected in the splicing complex carrying pre-mRNA. .
Tissue Specificity	
Function	function:Involved in transcription-coupled repair (TCR), transcription and pre-mRNA splicing.,sequence caution:Alternative splicing. Incomplete sequence. Incomplete sequence.,similarity:Belongs to the crooked-neck family.,similarity:Contains 14 HAT repeats.,subcellular location:Detected in the splicing complex carrying pre-mRNA.,subunit:Associates with RNA polymerase II, the TCR-specific proteins CKN1/CSA and ERCC6/CSB, and XPA. Identified in the spliceosome C complex, at least composed of AQR, ASCC3L1, C19orf29, CDC40, CDC5L, CRNKL1, DDX23, DDX41, DDX48, DDX5, DGCR14, DHX35, DHX38, DHX8, EFTUD2, FRG1, GPATC1, HNRPA1, HNRPA2B1, HNRPA3, HNRPC, HNRPF, HNRPH1, HNRPK, HNRPM, HNRPR, HNRPU, KIAA1160, KIAA1604, LSM2, LSM3, MAGOH, MORG1, PABPC1, PLRG1, PNN, PPIE, PPIL1, PPIL3, PPWD1, PRPF19, PRPF4B, PRPF6, PRPF8, RALY, RBM22, RBM8A, RBMX, SART1, SF3A1, SF3A2, SF3A3, SF3B1, SF3B2, SF3B3, SFRS1, S



Background

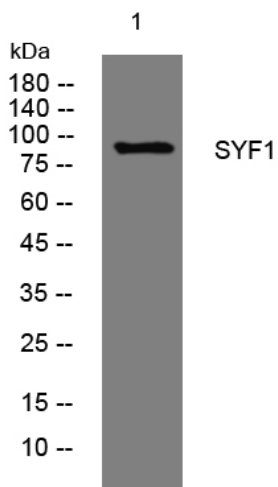
matters needing attention

Avoid repeated freezing and thawing!

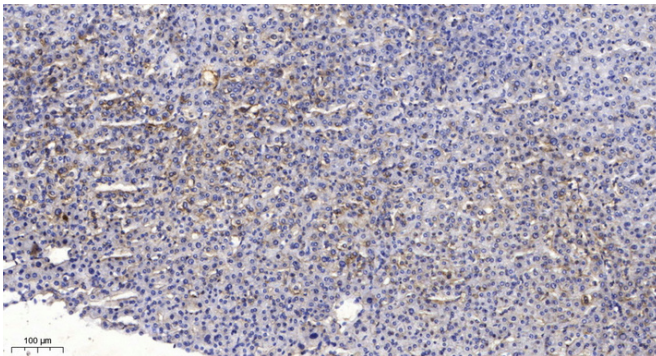
Usage suggestions

This product can be used in immunological reaction related experiments. For more information, please consult technical personnel.

Products Images



Western blot analysis of lysates from MCF-7 cells, primary antibody was diluted at 1:1000, 4° over night



Immunohistochemical analysis of paraffin-embedded human liver cancer. 1, Antibody was diluted at 1:200(4° overnight). 2, Tris-EDTA, pH9.0 was used for antigen retrieval. 3, Secondary antibody was diluted at 1:200(room temperature, 45min).