



ZN131 rabbit pAb

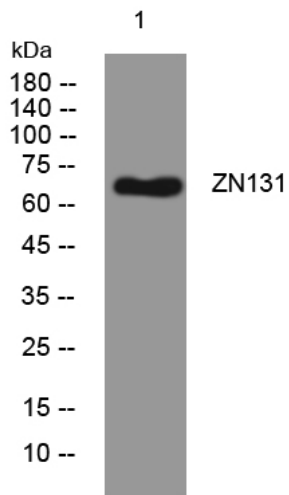
Catalog No	YP-Ab-11470
Isotype	IgG
Reactivity	Human; Mouse
Applications	WB
Gene Name	ZNF131
Protein Name	ZN131
Immunogen	Synthesized peptide derived from human ZN131 AA range: 274-324
Specificity	This antibody detects endogenous levels of ZN131 at Human/Mouse
Formulation	Liquid in PBS containing 50% glycerol, 0.5% BSA and 0.02% sodium azide.
Source	Polyclonal, Rabbit,IgG
Purification	The antibody was affinity-purified from rabbit serum by affinity-chromatography using specific immunogen.
Dilution	WB 1: 500-2000
Concentration	1 mg/ml
Purity	≥90%
Storage Stability	-20°C/1 year
Synonyms	
Observed Band	69kD
Cell Pathway	Nucleus . Sumoylation does not affect nuclear localization.
Tissue Specificity	Predominant expression is found in different brain areas such as the occipital and temporal lobe, the nucleus caudatus, hippocampus, and the cerebellum as well as in testis and thymus.
Function	function:May be involved in transcriptional regulation. Plays a role during development and organogenesis as well as in the function of the adult central nervous system.,similarity:Belongs to the krueppel C2H2-type zinc-finger protein family.,similarity:Contains 1 BTB (POZ) domain.,similarity:Contains 6 C2H2-type zinc fingers.,tissue specificity:Predominant expression is found in diferent brain areas such as the occipital and temporal lobe, the nucleus caudatus, hippocampus, and the cerebellum as well as in testis and thymus.,
Background	
matters needing attention	Avoid repeated freezing and thawing!



Usage suggestions

This product can be used in immunological reaction related experiments. For more information, please consult technical personnel.

Products Images



Western blot analysis of lysates from HpeG2 cells, primary antibody was diluted at 1:1000, 4° over night