

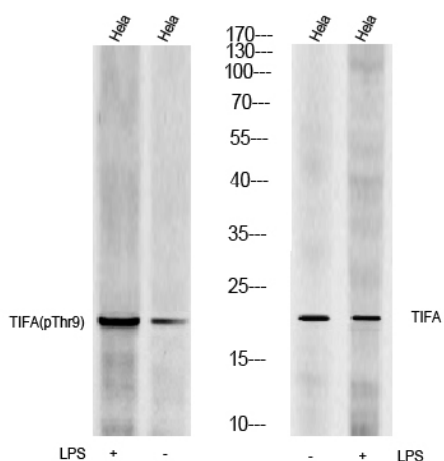


## TIFA(Phospho-Thr9) rabbit pAb

<b>Catalog No</b>	YP-Ab-10483
<b>Isotype</b>	IgG
<b>Reactivity</b>	Human; Mouse;Rat
<b>Applications</b>	WB
<b>Gene Name</b>	TIFA T2BP
<b>Protein Name</b>	TIFA(Phospho-Thr9)
<b>Immunogen</b>	Synthesized peptide derived from human TIFA(Phospho-Thr9)
<b>Specificity</b>	This antibody detects endogenous levels of TIFA(Phospho-Thr9) at Human, Mouse,Rat
<b>Formulation</b>	Liquid in PBS containing 50% glycerol, and 0.138% sodium azide.
<b>Source</b>	Polyclonal, Rabbit,IgG
<b>Purification</b>	The antibody was affinity-purified from rabbit serum by affinity-chromatography using specific immunogen.
<b>Dilution</b>	WB 1:500-2000
<b>Concentration</b>	1 mg/ml
<b>Purity</b>	≥90%
<b>Storage Stability</b>	-20°C/1 year
<b>Synonyms</b>	TRAF-interacting protein with FHA domain-containing protein A (Putative MAPK-activating protein PM14) (Putative NF-kappa-B-activating protein 20) (TRAF2-binding protein)
<b>Observed Band</b>	20kD
<b>Cell Pathway</b>	Cytoplasm . Colocalizes with lysosomal marker LAMP2 following homooligomerization and subsequent activation. .
<b>Tissue Specificity</b>	
<b>Function</b>	
<b>Background</b>	
<b>matters needing attention</b>	Avoid repeated freezing and thawing!
<b>Usage suggestions</b>	This product can be used in immunological reaction related experiments. For more information, please consult technical personnel.



## Products Images



Western Blot analysis of cell lysis treated or untreated by LPS 100ng/mL 30min, using primary antibody at 1:1000 dilution. Secondary antibody(catalog#:RS23920) was diluted at 1:10000