



NUD11 mouse mAb

Catalog No	YP-mAb-08530
Isotype	IgG
Reactivity	Human;Mouse;Rat
Applications	WB
Gene Name	NUDT11 APS1 DIPP3B
Protein Name	NUD11
Immunogen	Synthesized peptide derived from human NUD11 AA range: 83-133
Specificity	This antibody detects endogenous levels of NUD11 at Human/Mouse
Formulation	Liquid in PBS containing 50% glycerol, 0.5% BSA and 0.02% sodium azide.
Source	Monoclonal, mouse,IgG
Purification	The antibody was affinity-purified from mouse serum by affinity-chromatography using specific immunogen.
Dilution	WB 1: 500-2000
Concentration	1 mg/ml
Purity	≥90%
Storage Stability	-20°C/1 year
Calculated Molecular Weight	18kD
Synonyms	
Cell Pathway	Cytoplasm .
Tissue Specificity	Mainly expressed in testis and, at lower level in brain. According to PubMed:12121577, it is also expressed in pancreas and weakly expressed in thymus, prostate, ovary, lung, small intestine and heart.
Function	catalytic activity:Diphospho-myo-inositol polyphosphate + H(2)O = myo-inositol polyphosphate + phosphate.,cofactor:Magnesium or manganese. Manganese may be the true cofactor in vivo.,function:Cleaves a beta-phosphate from the diphosphate groups in PP-InsP5 (diphosphoinositol pentakisphosphate), suggesting that it may play a role in signal transduction. Also able to catalyzes the hydrolysis of dinucleoside oligophosphates, with Ap6A and Ap5A being the preferred substrates. The major reaction products are ADP and p4afrom Ap6A and ADP and ATP from Ap5A. Also able to hydrolyze 5-phosphoribose 1-diphosphate.,similarity:Belongs to the Nudix hydrolase family. DIPP subfamily.,tissue specificity:Mainly expressed in testis and, at lower level in brain.



According to PubMed:12121577, it is also expressed in pancreas and weakly expressed in thymus, prostate, ovary, lung, small intestine and heart.,

Background

NUDT11 belongs to a subgroup of phosphohydrolases that preferentially attack diphosphoinositol polyphosphates (Hidaka et al., 2002 [PubMed 12105228]).[supplied by OMIM, Mar 2008],

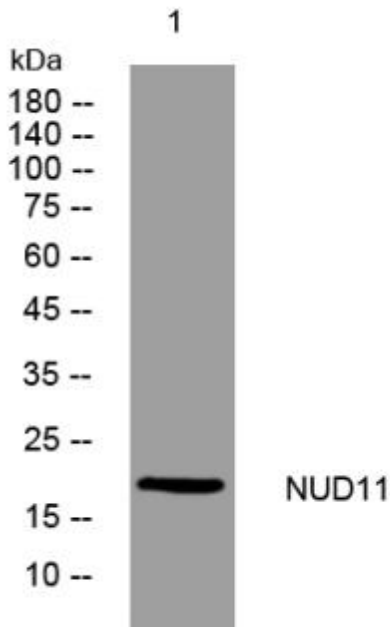
matters needing attention

Avoid repeated freezing and thawing!

Usage suggestions

This product can be used in immunological reaction related experiments. For more information, please consult technical personnel.

Products Images



Western blot analysis of lysates from MCF-7 cells, primary antibody was diluted at 1:1000, 4°over night