



# MAD1 Rabbit mAb

<b>Catalog No</b>	YP-rAb-18516
<b>Isotype</b>	IgG
<b>Reactivity</b>	Human,Mouse,Rat
<b>Applications</b>	WB,IF,ELISA
<b>Gene Name</b>	MAD1L1
<b>Protein Name</b>	Mitotic spindle assembly checkpoint protein MAD1
<b>Purification Process</b>	Protein A
<b>Specificity</b>	Endogenous
<b>Formulation</b>	PBS, 50% glycerol, 0.05% Proclin 300, 0.05%BSA
<b>Source</b>	Monoclonal, Rabbit,IgG
<b>Dilution</b>	WB 1:2000-1:10000; IF 1:200-1:1000; ELISA 1:5000-1:20000;
<b>Concentration</b>	0.5 mg/ml
<b>Purity</b>	≥90%
<b>Storage Stability</b>	-15° C to -25° C/1 year(Do not lower than -25° C)
<b>Synonyms</b>	MAD1L1 ; MAD1 ; TXBP181 ; Mitotic spindle assembly checkpoint protein MAD1 ; Mitotic arrest deficient 1-like protein 1 ; MAD1-like protein 1 ; Mitotic checkpoint MAD1 protein homolog ; HsMAD1 ; hMAD1 ; Tax-binding protein 181
<b>Observed Band</b>	83kD
<b>Calculated Molecular Weight</b>	83kD
<b>Cell Pathway</b>	Nucleus . Chromosome, centromere, kinetochore . Nucleus envelope . Cytoplasm, cytoskeleton, microtubule organizing center, centrosome . Cytoplasm, cytoskeleton, spindle . Cytoplasm, cytoskeleton, spindle pole . Co-localizes with TPR at the nucleus envelope during interphase and throughout the cell cycle (PubMed:22351768, PubMed:18981471). From the beginning to the end of mitosis, it is seen to move from a diffusely nuclear distribution to the centrosome, to the spindle midzone and finally to the midbody (PubMed:9546394). Localizes to kinetochores during prometaphase (PubMed:22351768, PubMed:29162720). Does not localize to kinetochores during metaphase (PubMed:29162720). Colocalizes with NEK2 at the kinetochore (PubMed:14978040). Colocalizes with IK at spindle poles during metaphase and anaphase (PubMed:22351768). . ; [Isoform 3]: Cytoplasm .
<b>Tissue Specificity</b>	[Isoform 1]: Expressed in hepatocellular carcinomas and hepatoma cell lines (at protein level). ; [Isoform 3]: Expressed in hepatocellular carcinomas and hepatoma cell lines (at protein level).

杭州臻优品生物科技有限公司

热销产品:

蛋白、一抗、抗体对、ELISA试剂盒、生化试剂盒  
CCK8试剂盒、QPCR检测试剂盒

检测服务:

ELISA检测及定制服务 | 生化检测 | PCR、QPCR检测 | WB检测  
ICO-IP检测 | 切片 | 染色 | 免疫组化 | 免疫荧光 | 透射电镜全套  
| 宏基因组、转录组、基因组、蛋白组、代谢组测序



关注官网



关注客服



## Function

**Disease:** Defects in MAD1L1 are involved in the development and/or progression of various types of cancer. **Function:** Component of the spindle-assembly checkpoint that prevents the onset of anaphase until all chromosomes are properly aligned at the metaphase plate. May recruit MAD2L1 to unattached kinetochores. Has a role in the correct positioning of the septum. Required for anchoring MAD2L1 to the nuclear periphery. **induction:** Increased by TP53. **PTM:** Phosphorylated; by BUB1. Become hyperphosphorylated in late S through M phases or after mitotic spindle damage. Phosphorylated upon DNA damage, probably by ATM or ATR. **similarity:** Belongs to the MAD1 family. **subcellular location:** From the beginning to the end of mitosis, it is seen to move from a diffusely nuclear distribution to the centrosome, to the spindle midzone and finally to the midbody. **subunit:** Homodimer. Heterodimerizes with MAD2L1 in order to form a tetrameric MAD1L1-MAD2L1 core complex. Perturbation of the original MAD1L1-MAD2L1 structure by the spindle checkpoint may decrease MAD2L1 affinity for MAD1L1. CDC20 can compete with MAD1L1 for MAD2L1 binding, until the attachment and/or tension dampen the checkpoint signal, preventing further release of MAD2L1 on to CDC20. Also able to interact with the BUB1/BUB3 complex and the viral Tax protein. Interacts with TPR. **tissue specificity:** Expressed weakly at G0/G1 and highly at late S and G2/M phase.

## Background

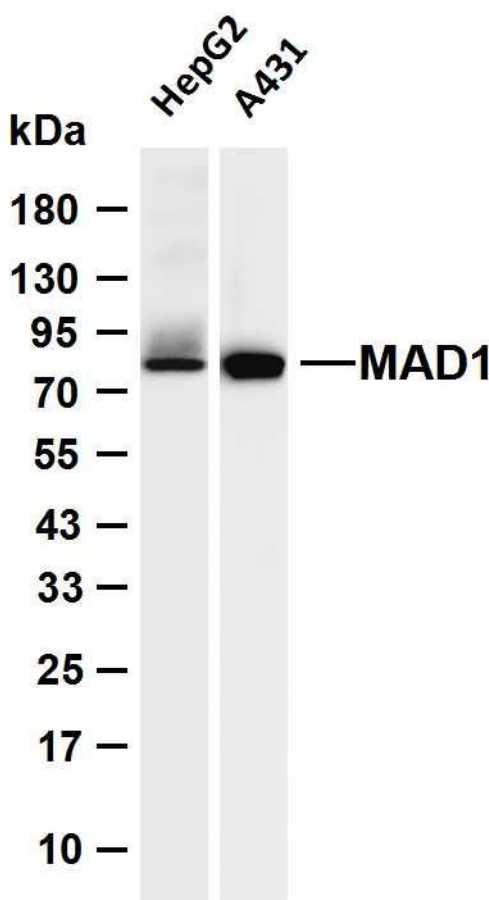
MAD1L1 is a component of the mitotic spindle-assembly checkpoint that prevents the onset of anaphase until all chromosome are properly aligned at the metaphase plate. MAD1L1 functions as a homodimer and interacts with MAD2L1. MAD1L1 may play a role in cell cycle control and tumor suppression. Alternative splicing results in multiple transcript variants. [provided by RefSeq, Jan 2015],

## matters needing attention

Avoid repeated freezing and thawing!

## Usage suggestions

This product can be used in immunological reaction related experiments. For more information, please consult technical personnel.



Various whole cell lysates were separated by 4-20% SDS-PAGE, and the membrane was blotted with anti-MAD1 antibody. The HRP-conjugated Goat anti-Rabbit IgG (H + L) antibody was used to detect the antibody. Lane 1: HepG2 Lane 2: A431 Predicted band size: 83kDa Observed band size: 83kDa





---

---

---

---

## 杭州臻优品生物科技有限公司

### 热销产品:

蛋白、一抗、抗体对、ELISA试剂盒、生化试剂盒  
CCK8试剂盒、QPCR检测试剂盒

### 检测服务:

ELISA检测及定制服务 | 生化检测 | PCR、QPCR检测 | WB检测  
ICO-IP检测 | 切片 | 染色 | 免疫组化 | 免疫荧光 | 透射电镜全套  
| 宏基因组、转录组、基因组、蛋白组、代谢组测序



关注官网



关注客服