



# AID Rabbit mAb

<b>Catalog No</b>	YP-rAb-18514
<b>Isotype</b>	IgG
<b>Reactivity</b>	Human
<b>Applications</b>	WB,IHC,IF,IP,ELISA
<b>Gene Name</b>	AICDA
<b>Protein Name</b>	Activation-induced cytidine deaminase
<b>Purification Process</b>	Protein A
<b>Specificity</b>	Endogenous
<b>Formulation</b>	PBS, 50% glycerol, 0.05% Proclin 300, 0.05%BSA
<b>Source</b>	Monoclonal, Rabbit,IgG
<b>Dilution</b>	IHC 1:200-1:1000; WB 1:2000-1:10000; IF 1:200-1:1000; ELISA 1:5000-1:20000; IP 1:50-1:200; Note: For IHC, we suggest antigen retrieval with TE buffer pH 9.0
<b>Concentration</b>	0.5 mg/ml
<b>Purity</b>	≥90%
<b>Storage Stability</b>	-15° C to -25° C/1 year(Do not lower than -25° C)
<b>Synonyms</b>	AICDA ; AID ; Activation-induced cytidine deaminase ; Cytidine aminohydrolase
<b>Observed Band</b>	23kD
<b>Calculated Molecular Weight</b>	24kD
<b>Cell Pathway</b>	Nucleus . Cytoplasm . Predominantly cytoplasmic (PubMed:21385873). In the presence of MCM3AP/GANP, relocalizes to the nucleus (By similarity). .
<b>Tissue Specificity</b>	Strongly expressed in lymph nodes and tonsils.
<b>Function</b>	Catalytic activity:Cytidine + H(2)O = uridine + NH(3).,cofactor:Zinc.,Disease:Defects in AICDA are the cause of autosomal recessive hyper-IgM immunodeficiency syndrome type 2 (HIGM2) [MIM:605258]. HIGM2 is characterized by normal or elevated serum IgM levels with absence of IgG, IgA, and IgE, resulting in a profound susceptibility to bacterial infections. HIGM2 causes the absence of Ig class switch recombination (CSR), the lack of Ig somatic hypermutations, and lymph node hyperplasia caused by the presence of giant germinal centers.,Function:RNA-editing deaminase involved in somatic hypermutation, gene conversion, and class-switch recombination. Required for several crucial steps of B-cell terminal differentiation necessary for efficient antibody responses.,online information:AICDA mutation db,similarity:Belongs to the cytidine and deoxycytidylate deaminase family.,tissue specificity:Strongly expressed in lymph nodes and tonsils.,





### Background

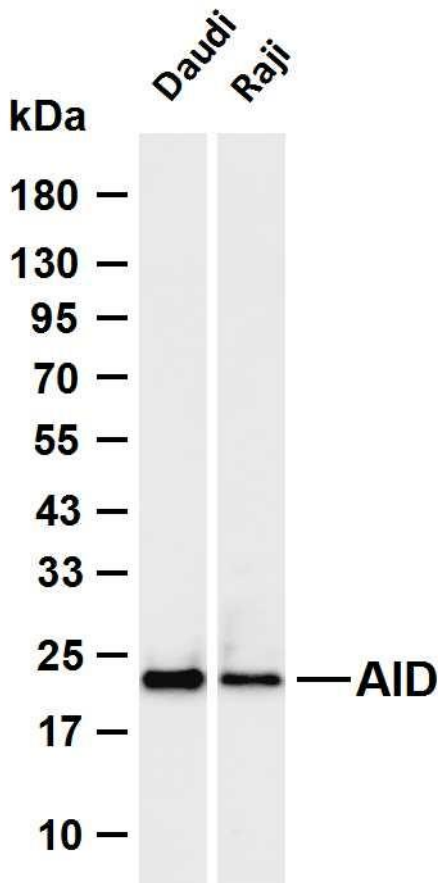
This gene encodes a RNA-editing deaminase that is a member of the cytidine deaminase family. The protein is involved in somatic hypermutation, gene conversion, and class-switch recombination of immunoglobulin genes. Defects in this gene are the cause of autosomal recessive hyper-IgM immunodeficiency syndrome type 2 (HIGM2). [provided by RefSeq, Feb 2009],

### matters needing attention

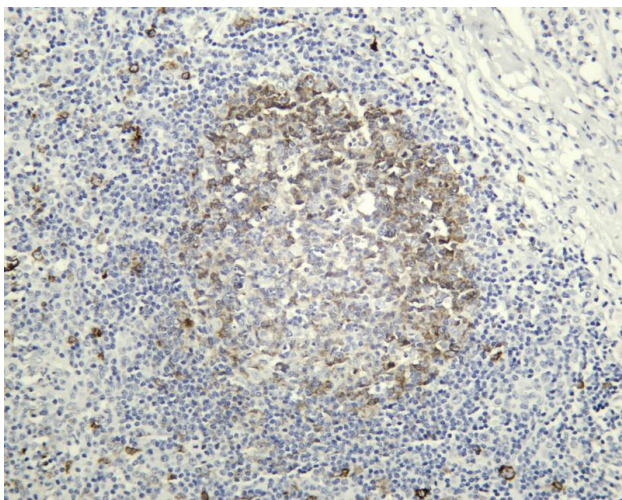
Avoid repeated freezing and thawing!

### Usage suggestions

This product can be used in immunological reaction related experiments. For more information, please consult technical personnel.



Various whole cell lysates were separated by 4-20% SDS-PAGE, and the membrane was blotted with anti-AID antibody. The HRP-conjugated Goat anti-Rabbit IgG (H + L) antibody was used to detect the antibody. Lane 1: Daudi Lane 2: Raji Predicted band size: 24kDa Observed band size: 23kDa



Human tonsil was stained with anti-AID Rabbit antibody

## 杭州臻优品生物科技有限公司

### 热销产品:

蛋白、一抗、抗体对、ELISA试剂盒、生化试剂盒  
CCK8试剂盒、QPCR检测试剂盒

### 检测服务:

ELISA检测及定制服务 | 生化检测 | PCR、QPCR检测 | WB检测  
ICO-IP检测 | 切片 | 染色 | 免疫组化 | 免疫荧光 | 透射电镜全套  
| 宏基因组、转录组、基因组、蛋白组、代谢组测序



关注官网



关注客服