



CDT1 Rabbit mAb

Catalog No	YP-rAb-18510
Isotype	IgG
Reactivity	Human,Rat
Applications	WB,IHC,IF,IP,ELISA
Gene Name	CDT1
Protein Name	DNA replication factor Cdt1 (Double parked homolog) (DUP)
Purification Process	Protein A
Specificity	Endogenous
Formulation	PBS, 50% glycerol, 0.05% Proclin 300, 0.05%BSA
Source	Monoclonal, Rabbit,IgG
Dilution	IHC 1:200-1:1000; WB 1:2000-1:10000; IF 1:200-1:1000; ELISA 1:5000-1:20000; IP 1:50-1:200; Note: For IHC, we suggest antigen retrieval with TE buffer pH 9.0
Concentration	0.5 mg/ml
Purity	≥90%
Storage Stability	-15° C to -25° C/1 year(Do not lower than -25° C)
Synonyms	
Observed Band	70kD
Calculated Molecular Weight	60kD
Cell Pathway	Nucleus . Chromosome, centromere, kinetochore . Transiently localizes to kinetochores during prometaphase and metaphase. .
Tissue Specificity	Brain,Cervix,Epithelium,Eye,Kidney,Liver,Uterus,
Function	developmental stage:Present during G1 and early S phase of the cell cycle. Degraded during the late S, G2, and M phases.,Function:Cooperates with CDC6 to promote the loading of the mini-chromosome maintenance complex onto chromatin to form the pre-replication complex necessary to initiate DNA replication. Binds DNA in a sequence-, strand-, and conformation-independent manner. Potential oncogene.,PTM:Phosphorylated by cyclin A-dependent kinases which results in the binding of CDT1 to the F-box protein SKP2 and subsequent degradation. Binding to GMNN is not affected by phosphorylation.,PTM:Ubiquitinated, leading to its subsequent degradation. The interaction with GMNN protects it against ubiquitination.,similarity:Belongs to the Cdt1 family.,subunit:Interaction with GMNN inhibits both binding of the MCM complex to origins of replication and DNA-binding activity.,





Background

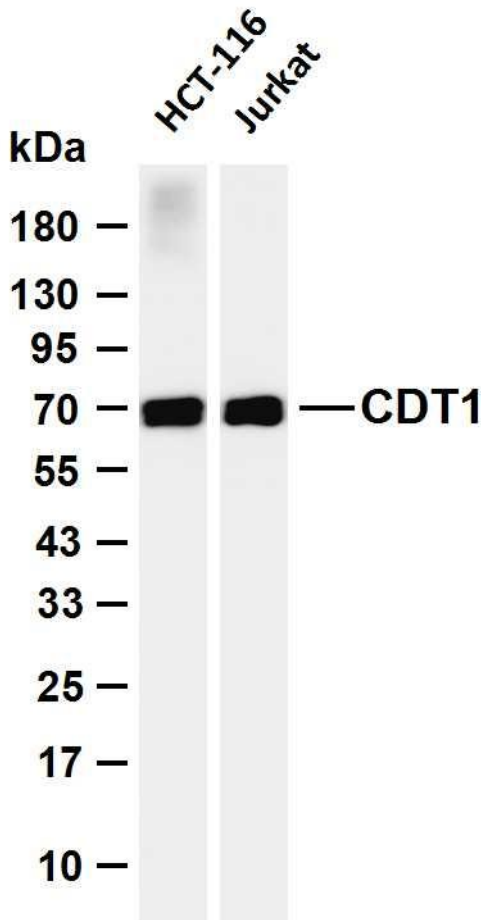
The protein encoded by this gene is involved in the formation of the pre-replication complex that is necessary for DNA replication. The encoded protein can bind geminin, which prevents replication and may function to prevent this protein from initiating replication at inappropriate origins. Phosphorylation of this protein by cyclin A-dependent kinases results in degradation of the protein. [provided by RefSeq, Mar 2011],

matters needing attention

Avoid repeated freezing and thawing!

Usage suggestions

This product can be used in immunological reaction related experiments. For more information, please consult technical personnel.



Various whole cell lysates were separated by 4-20% SDS-PAGE, and the membrane was blotted with anti-CDT1 antibody. The HRP-conjugated Goat anti-Rabbit IgG (H + L) antibody was used to detect the antibody. Lane 1: HCT-116 Lane 2: Jurkat Predicted band size: 60kDa Observed band size: 70kDa

