



UBC12 Rabbit mAb

Catalog No	YP-rAb-18509
Isotype	IgG
Reactivity	Human,Mouse,Rat
Applications	WB,IHC,IF,IP,ELISA
Gene Name	UBE2M UBC12
Protein Name	UBC12
Purification Process	Protein A
Specificity	Endogenous
Formulation	PBS, 50% glycerol, 0.05% Proclin 300, 0.05%BSA
Source	Monoclonal, Rabbit,IgG
Dilution	IHC 1:200-1:1000; WB 1:2000-1:10000; IF 1:200-1:1000; ELISA 1:5000-1:20000; IP 1:50-1:200; Note: For IHC, we suggest antigen retrieval with TE buffer pH 9.0
Concentration	0.5 mg/ml
Purity	≥90%
Storage Stability	-15° C to -25° C/1 year(Do not lower than -25° C)
Synonyms	
Observed Band	21kD
Calculated Molecular Weight	21kD
Cell Pathway	cytoplasm,cytosol,extracellular exosome,
Tissue Specificity	
Function	Catalytic activity:ATP + NEDD8 + protein lysine = AMP + diphosphate + protein N-NEDD8yllysine.,Domain:Both the N-terminal docking peptide and the catalytic core domain must bind the uba3-nae1 complex simultaneously for optimal transfer of nedd8.,Function:Accepts the ubiquitin-like protein NEDD8 from the UBA3-NAE1 E1 complex and catalyzes its covalent attachment to other proteins. The specific interaction with the E3 ubiquitin ligase rbx1, but not rbx2, suggests that the rbx1-ube2m complex neddylates specific target proteins, such as cul1, cul2, cul3 and cul4. Involved in cell proliferation.,pathway:Protein modification; protein neddylation.,similarity:Belongs to the ubiquitin-conjugating enzyme family. UBC12 subfamily.,subunit:Interacts with UBA3 and RBX1.,
Background	The modification of proteins with ubiquitin is an important cellular mechanism for targeting abnormal or short-lived proteins for degradation. Ubiquitination involves





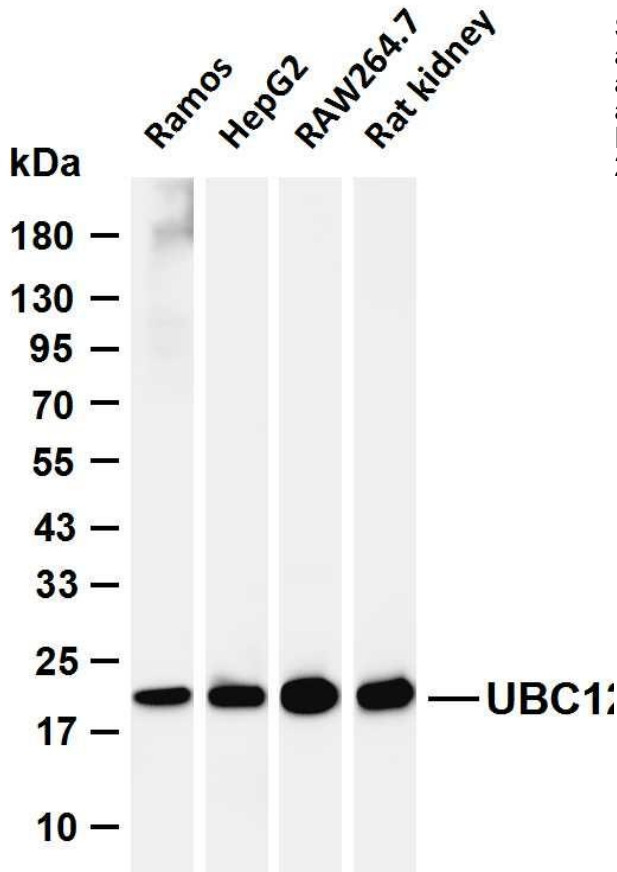
at least three classes of enzymes: ubiquitin-activating enzymes, or E1s, ubiquitin-conjugating enzymes, or E2s, and ubiquitin-protein ligases, or E3s. This gene encodes a member of the E2 ubiquitin-conjugating enzyme family. The encoded protein is linked with a ubiquitin-like protein, NEDD8, which can be conjugated to cellular proteins, such as Cdc53/culin. [provided by RefSeq, Jul 2008],

matters needing attention

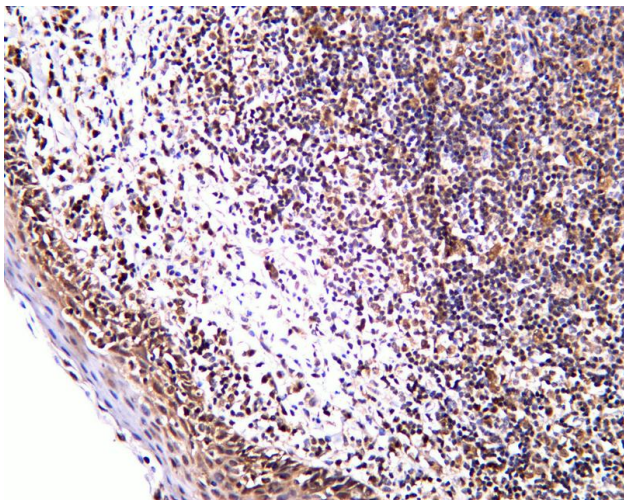
Avoid repeated freezing and thawing!

Usage suggestions

This product can be used in immunological reaction related experiments. For more information, please consult technical personnel.



Various whole cell lysates were separated by 4-20% SDS-PAGE, and the membrane was blotted with anti-UBC12 antibody. The HRP-conjugated Goat anti-Rabbit IgG (H + L) antibody was used to detect the antibody. Lane 1: Ramos Lane 2: HepG2 Lane 3: RAW264.7 Lane 4: Rat kidney Predicted band size: 21kDa Observed band size: 21kDa



Human tonsil was stained with anti-UBC12 Rabbit antibody

杭州臻优品生物科技有限公司

热销产品:

蛋白、一抗、抗体对、ELISA试剂盒、生化试剂盒
CCK8试剂盒、QPCR检测试剂盒

检测服务:

ELISA检测及定制服务 | 生化检测 | PCR、QPCR检测 | WB检测
ICO-IP检测 | 切片 | 染色 | 免疫组化 | 免疫荧光 | 透射电镜全套
| 宏基因组、转录组、基因组、蛋白组、代谢组测序



关注官网



关注客服