



# MKK3 (Phospho Ser189)/MKK6 (Phospho Ser207) Rabbit mAb

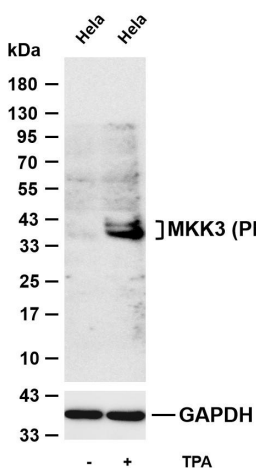
<b>Catalog No</b>	YP-rAb-18500
<b>Isotype</b>	IgG
<b>Reactivity</b>	Human,Mouse,Rat
<b>Applications</b>	WB,IHC,IF,IP,ELISA
<b>Gene Name</b>	MAP2K3;MAP2K6
<b>Protein Name</b>	Serine protease HTRA2 mitochondrial
<b>Purification Process</b>	Protein A
<b>Specificity</b>	MKK3 (Phospho Ser189)/MKK6 (Phospho Ser207) Antibody detects endogenous levels of MKK3/MEK6 protein only when phosphorylated at S189/S207.The name of modified sites may be influenced by many factors, such as species (the modified site was not originally found in human samples) and the change of protein sequence (the previous protein sequence is incomplete, and the protein sequence may be prolonged with the development of protein sequencing technology). When naming, we will use the "numbers" in historical reference to keep the sites consistent with the reports. The antibody binds to the following modification sequence (lowercase letters are modification sites):lHrDV/VDsVA
<b>Formulation</b>	PBS, 50% glycerol, 0.05% Proclin 300, 0.05%BSA
<b>Source</b>	Monoclonal, Rabbit,IgG
<b>Dilution</b>	IHC 1:100-1:500; WB 1:1000-1:5000; IF 1:200-1:1000; ELISA 1:5000-1:20000; IP 1:50-1:200; Note: For IHC, we suggest antigen retrieval with TE buffer pH 9.0
<b>Concentration</b>	0.5 mg/ml
<b>Purity</b>	≥90%
<b>Storage Stability</b>	-15° C to -25° C/1 year(Do not lower than -25° C)
<b>Synonyms</b>	AW212142 ; dual specificity mitogen activated protein kinase kinase 3 ; Dual specificity mitogen activated protein kinase kinase 6 ; Dual specificity mitogen-activated protein kinase kinase 3 ; MAP kinase kinase 3 ; MAP kinase kinase 6 ; map2k3 ; MAP2K6 ; MAPK ERK kinase 3 ; MAPK/ERK kinase 3 ; MAPK/ERK kinase 6 ; MAPKK 3 ; MAPKK 6 ; MAPKK3 ; MAPKK6 ; MEK 3 ; MEK 6 ; MEK3 ; Mitogen activated protein kinase kinase 3 ; Mitogen activated protein kinase kinase 6 ; MKK 3 ; MKK3 ; MKK6 ; mMKK3b ; MP2K3_HUMAN ; PRKMK 3 ; PRKMK3 ; PRKMK6 ; Protein kinase, mitogen activated, kinase 6 ; MAP kinase kinase 6 ; protein kinase, mitogen-activated, kinase 3 ; SAPK kinase 2 ; SAPKK 2 ; SAPKK 3 ; SAPKK-2 ; SAPKK2 ; SAPKK3 ; Stress activated protein kinase kinase 2 ; Stress activated protein kinase kinase 3 ; Stress-activated protein





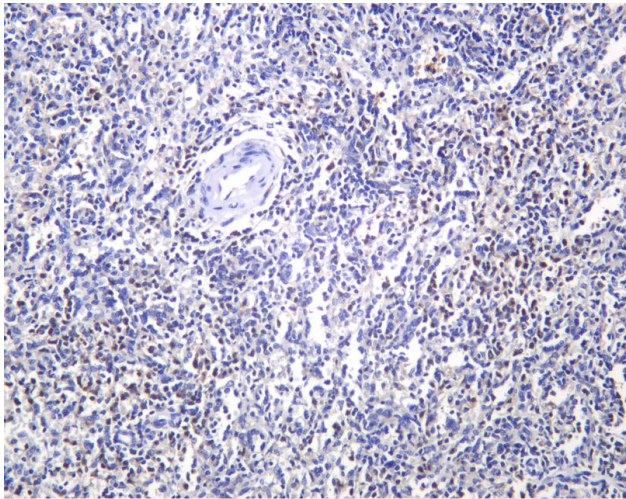
kinase kinase 2.

<b>Observed Band</b>	39kD,37kD
<b>Calculated Molecular Weight</b>	39kD,37kD
<b>Cell Pathway</b>	Nucleus . Cytoplasm . Cytoplasm, cytoskeleton . Binds to microtubules.
<b>Tissue Specificity</b>	Isoform 2 is only expressed in skeletal muscle. Isoform 1 is expressed in skeletal muscle, heart, and in lesser extent in liver or pancreas.
<b>Function</b>	Catalytic activity:ATP + a protein = ADP + a phosphoprotein.,enzyme regulation:Probably activated by dual phosphorylation on Ser-207 and Thr-211.,Function:Catalyzes the concomitant phosphorylation of a threonine and a tyrosine residue in MAP kinase p38 exclusively.,induction:Strongly activated by UV, anisomycin, and osmotic shock but not by phorbol esters, NGF or EGF.,PTM:Acetylation of Ser-207 and Thr-211 by Yersinia yopJ prevents phosphorylation and activation, thus blocking the MAPK signaling pathway.,PTM:Weakly autophosphorylated.,similarity:Belongs to the protein kinase superfamily.,similarity:Belongs to the protein kinase superfamily. STE Ser/Thr protein kinase family. MAP kinase kinase subfamily.,similarity:Contains 1 protein kinase domain.,subunit:Interacts with Yersinia yopJ.,tissue specificity:Isoform 2 is only expressed in skeletal muscle. Isoform 1, on the other hand, is found in skeletal muscle, heart, and in lesser extent in liver or pancreas.,
<b>Background</b>	This gene encodes a member of the dual specificity protein kinase family, which functions as a mitogen-activated protein (MAP) kinase kinase. MAP kinases, also known as extracellular signal-regulated kinases (ERKs), act as an integration point for multiple biochemical signals. This protein phosphorylates and activates p38 MAP kinase in response to inflammatory cytokines or environmental stress. As an essential component of p38 MAP kinase mediated signal transduction pathway, this gene is involved in many cellular processes such as stress induced cell cycle arrest, transcription activation and apoptosis. [provided by RefSeq, Jul 2008],
<b>matters needing attention</b>	Avoid repeated freezing and thawing!
<b>Usage suggestions</b>	This product can be used in immunological reaction related experiments. For more information, please consult technical personnel.



Various whole cell lysates were separated by 4-20% SDS-PAGE, and the membrane was blotted with anti-MKK3 (Phospho Ser189)/MKK6 (Phospho Ser207) antibody. The HRP-conjugated Goat anti-Rabbit IgG (H + L) antibody was used to detect the antibody. Lane 1: HeLa Lane 2: HeLa was treated with TPA(200 ng/ml) for 15 minutes Predicted band size: 39,37kDa Observed band size: 39,37kDa





Human spleen was stained with anti-MKK3 (Phospho Ser189)/MKK6 (Phospho Ser207) Rabbit antibody

## 杭州臻优品生物科技有限公司

### 热销产品:

蛋白、一抗、抗体对、ELISA试剂盒、生化试剂盒  
CCK8试剂盒、QPCR检测试剂盒

### 检测服务:

ELISA检测及定制服务 | 生化检测 | PCR、QPCR检测 | WB检测  
ICO-IP检测 | 切片 | 染色 | 免疫组化 | 免疫荧光 | 透射电镜全套  
| 宏基因组、转录组、基因组、蛋白组、代谢组测序



关注官网



关注客服