



SYPL1 Rabbit mAb

Catalog No	YP-rAb-18497
Isotype	IgG
Reactivity	Human,Mouse,Rat
Applications	WB,IHC,FC
Gene Name	SYPL1,SYPL
Protein Name	Synaptophysin-like protein 1 (Pantophysin)
Purification Process	Protein A
Specificity	Endogenous
Formulation	PBS, 50% glycerol, 0.05% Proclin 300, 0.05%BSA
Source	Monoclonal, Rabbit,IgG
Dilution	IHC 1:200-1:1000; WB 1:1000-1:5000; FC 1:100-1:500; Note: For IHC, we suggest antigen retrieval with TE buffer pH 9.0
Concentration	0.5 mg/ml
Purity	≥90%
Storage Stability	-15° C to -25° C/1 year(Do not lower than -25° C)
Synonyms	SYPL
Observed Band	28kD
Calculated Molecular Weight	28kD
Cell Pathway	SUBCELLULAR LOCATION: Cytoplasmic vesicle membrane {ECO:0000250}; Multi-pass membrane protein {ECO:0000250}. Melanosome {ECO:0000269 PubMed:17081065}. Note=Cytoplasmic transport vesicles (By similarity). Identified by mass spectrometry in melanosome fractions from stage I to stage IV. {ECO:0000250}.
Tissue Specificity	
Function	
Background	Predicted to be involved in chemical synaptic transmission. Located in extracellular exosome. [provided by Alliance of Genome Resources, Apr 2025]
matters needing attention	Avoid repeated freezing and thawing!

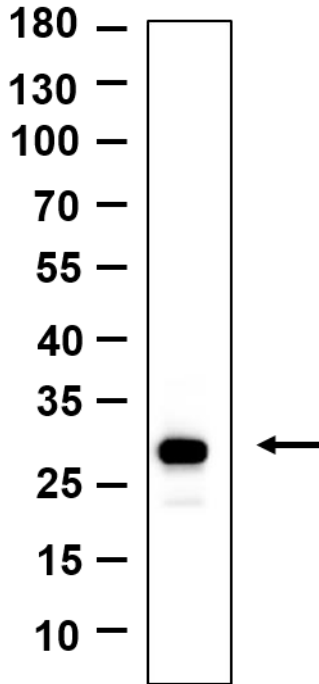




Usage suggestions

This product can be used in immunological reaction related experiments. For more information, please consult technical personnel.

kDa



Western blot analysis of lysates from A549 cell, primary antibody was diluted at 1:1000, 4° over night, Dylight 800 secondary antibody was diluted at 1:10000, 37° 1hour.

杭州臻优品生物科技有限公司

热销产品:

蛋白、一抗、抗体对、ELISA试剂盒、生化试剂盒
CCK8试剂盒、QPCR检测试剂盒

检测服务:

ELISA检测及定制服务 | 生化检测 | PCR、QPCR检测 | WB检测
ICO-IP检测 | 切片 | 染色 | 免疫组化 | 免疫荧光 | 透射电镜全套
| 宏基因组、转录组、基因组、蛋白组、代谢组测序



关注官网



关注客服