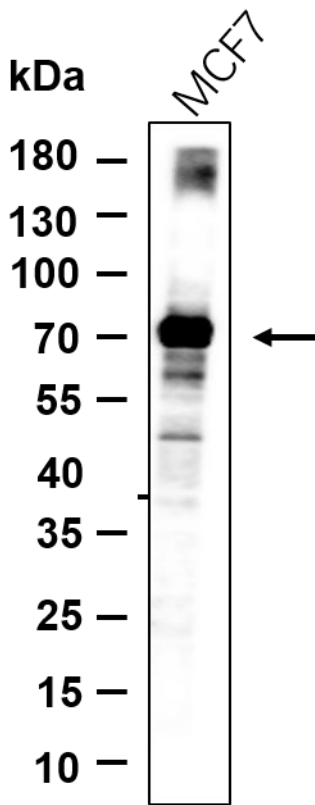




# MS4A14 Rabbit mAb

<b>Catalog No</b>	YP-rAb-18492
<b>Isotype</b>	IgG
<b>Reactivity</b>	Human,Mouse,Rat
<b>Applications</b>	WB
<b>Gene Name</b>	MS4A14,MS4A13,MS4A16
<b>Protein Name</b>	Membrane-spanning 4-domains subfamily A member 14 (Testis development protein NYD-SP21)
<b>Purification Process</b>	Protein A
<b>Specificity</b>	Endogenous
<b>Formulation</b>	PBS, 50% glycerol, 0.05% Proclin 300, 0.05%BSA
<b>Source</b>	Monoclonal, Rabbit,IgG
<b>Dilution</b>	WB 1:1000-1:5000;
<b>Concentration</b>	0.5 mg/ml
<b>Purity</b>	≥90%
<b>Storage Stability</b>	-15° C to -25° C/1 year(Do not lower than -25° C)
<b>Synonyms</b>	MS4A13 MS4A16
<b>Observed Band</b>	75kD
<b>Calculated Molecular Weight</b>	75kD
<b>Cell Pathway</b>	SUBCELLULAR LOCATION: Membrane {ECO:0000305}; Multi-pass membrane protein {ECO:0000305}.
<b>Tissue Specificity</b>	
<b>Function</b>	May be involved in signal transduction as a component of a multimeric receptor complex. {ECO:0000250}.
<b>Background</b>	Predicted to be involved in cell surface receptor signaling pathway. Predicted to be located in membrane. Predicted to be active in plasma membrane. [provided by Alliance of Genome Resources, Apr 2025]
<b>matters needing attention</b>	Avoid repeated freezing and thawing!
<b>Usage suggestions</b>	This product can be used in immunological reaction related experiments. For more information, please consult technical personnel.





Western blot analysis of lysates from MCF7 cell, primary antibody was diluted at 1:1000, 4° over night, Dylight 800 secondary antibody was diluted at 1:10000, 37° 1hour.

## 杭州臻优品生物科技有限公司

### 热销产品:

蛋白、一抗、抗体对、ELISA试剂盒、生化试剂盒  
CCK8试剂盒、QPCR检测试剂盒

### 检测服务:

ELISA检测及定制服务 | 生化检测 | PCR、QPCR检测 | WB检测  
ICO-IP检测 | 切片 | 染色 | 免疫组化 | 免疫荧光 | 透射电镜全套  
| 宏基因组、转录组、基因组、蛋白组、代谢组测序



关注官网



关注客服