



# KCTD21 Rabbit mAb

Catalog No	YP-rAb-18491
Isotype	IgG
Reactivity	Human,Mouse,Rat
Applications	WB,FC
Gene Name	KCTD21
Protein Name	BTB/POZ domain-containing protein KCTD21 (KCASH2 protein) (Potassium channel tetramerization domain-containing protein 21)
Purification Process	Protein A
Specificity	Endogenous
Formulation	PBS, 50% glycerol, 0.05% Proclin 300, 0.05%BSA
Source	Monoclonal, Rabbit,IgG
Dilution	WB 1:1000-1:5000; FC 1:100-1:500;
Concentration	0.5 mg/ml
Purity	≥90%
Storage Stability	-15° C to -25° C/1 year(Do not lower than -25° C)
Synonyms	
Observed Band	29kD
Calculated Molecular Weight	29kD
Cell Pathway	
Tissue Specificity	TISSUE SPECIFICITY: Highly expressed in cerebellum and brain. Expression is down-regulated in medulloblastoma. {ECO:0000269 PubMed:21472142}.
Function	Probable substrate-specific adapter of a BCR (BTB-CUL3-RBX1) E3 ubiquitin-protein ligase complex mediating the ubiquitination and subsequent proteasomal degradation of target proteins. Promotes the ubiquitination of HDAC1. Can function as antagonist of the Hedgehog pathway by affecting the nuclear transfer of transcription factor GLI1; the function probably occurs via HDAC1 down-regulation, keeping GLI1 acetylated and inactive. Inhibits cell growth and tumorigenicity of medulloblastoma (MDB) (PubMed:21472142). {ECO:0000269 PubMed:21472142}.
Background	Enables cullin family protein binding activity; histone deacetylase binding activity; and identical protein binding activity. Involved in negative regulation of smoothened signaling pathway and ubiquitin-dependent protein catabolic process. [provided by Alliance of Genome Resources, Apr 2025]

## 杭州臻优品生物科技有限公司

### 热销产品:

蛋白、一抗、抗体对、ELISA试剂盒、生化试剂盒  
CCK8试剂盒、QPCR检测试剂盒

### 检测服务:

ELISA检测及定制服务 | 生化检测 | PCR、QPCR检测 | WB检测  
ICO-IP检测 | 切片 | 染色 | 免疫组化 | 免疫荧光 | 透射电镜全套  
| 宏基因组、转录组、基因组、蛋白组、代谢组测序



关注官网



关注客服

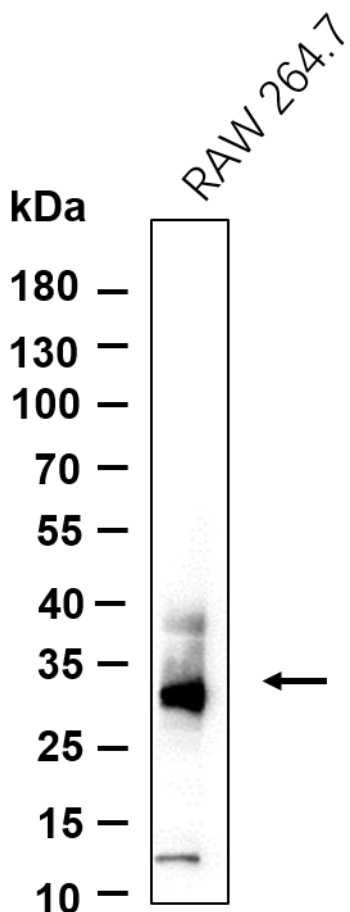


matters needing attention

Avoid repeated freezing and thawing!

Usage suggestions

This product can be used in immunological reaction related experiments. For more information, please consult technical personnel.



Western blot analysis of lysates from RAW 264.7 cell, primary antibody was diluted at 1:1000, 4° over night, Dylight 800 secondary antibody was diluted at 1:10000, 37° 1 hour.

