



# ZNF160 Rabbit mAb

<b>Catalog No</b>	YP-rAb-18490
<b>Isotype</b>	IgG
<b>Reactivity</b>	Human,Mouse,Rat
<b>Applications</b>	WB,FC
<b>Gene Name</b>	ZNF160,KIAA1611
<b>Protein Name</b>	Zinc finger protein 160 (Zinc finger protein HZF5) (Zinc finger protein Kr18) (HKr18)
<b>Purification Process</b>	Protein A
<b>Specificity</b>	Endogenous
<b>Formulation</b>	PBS, 50% glycerol, 0.05% Proclin 300, 0.05%BSA
<b>Source</b>	Monoclonal, Rabbit,IgG
<b>Dilution</b>	WB 1:1000-1:5000; FC 1:100-1:500;
<b>Concentration</b>	0.5 mg/ml
<b>Purity</b>	≥90%
<b>Storage Stability</b>	-15° C to -25° C/1 year(Do not lower than -25° C)
<b>Synonyms</b>	KIAA1611
<b>Observed Band</b>	90kD
<b>Calculated Molecular Weight</b>	90kD
<b>Cell Pathway</b>	SUBCELLULAR LOCATION: Nucleus {ECO:0000305}.
<b>Tissue Specificity</b>	TISSUE SPECIFICITY: Ubiquitous. {ECO:0000269 PubMed:11410164}.
<b>Function</b>	May be involved in transcriptional regulation.
<b>Background</b>	The protein encoded by this gene is a Kruppel-related zinc finger protein which is characterized by the presence of an N-terminal repressor domain, the Kruppel-associated box (KRAB). The KRAB domain is a potent repressor of transcription; thus this protein may function in transcription regulation. Multiple transcript variants have been found for this gene. [provided by RefSeq, Apr 2016]
<b>matters needing attention</b>	Avoid repeated freezing and thawing!

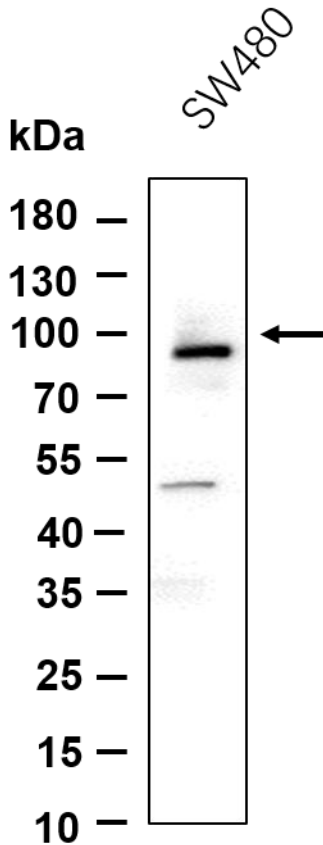




### Usage suggestions

This product can be used in immunological reaction related experiments. For more information, please consult technical personnel.

Western blot analysis of lysates from SW480 cell, primary antibody was diluted at 1:1000, 4° over night, Dylight 800 secondary antibody was diluted at 1:10000, 37° 1hour.



## 杭州臻优品生物科技有限公司

### 热销产品:

蛋白、一抗、抗体对、ELISA试剂盒、生化试剂盒  
CCK8试剂盒、QPCR检测试剂盒

### 检测服务:

ELISA检测及定制服务 | 生化检测 | PCR、QPCR检测 | WB检测  
ICO-IP检测 | 切片 | 染色 | 免疫组化 | 免疫荧光 | 透射电镜全套  
| 宏基因组、转录组、基因组、蛋白组、代谢组测序



关注官网



关注客服