



# CD16/CD32 Rabbit mAb

<b>Catalog No</b>	YP-rAb-18484
<b>Isotype</b>	IgG
<b>Reactivity</b>	Mouse
<b>Applications</b>	WB,IHC,IF,ELISA
<b>Gene Name</b>	FCGR3A/FCGR2B
<b>Protein Name</b>	Low affinity immunoglobulin gamma Fc region receptor III-A/Low affinity immunoglobulin gamma Fc region receptor II-b
<b>Purification Process</b>	Protein A
<b>Specificity</b>	Endogenous
<b>Formulation</b>	PBS, 50% glycerol, 0.05% Proclin 300, 0.05%BSA
<b>Source</b>	Monoclonal, Rabbit,IgG
<b>Dilution</b>	IHC 1:200-1:1000; WB 1:2000-1:10000; IF 1:200-1:1000; ELISA 1:5000-1:20000; Note: For IHC, we suggest antigen retrieval with TE buffer pH 9.0
<b>Concentration</b>	0.5 mg/ml
<b>Purity</b>	≥90%
<b>Storage Stability</b>	-15° C to -25° C/1 year(Do not lower than -25° C)
<b>Synonyms</b>	
<b>Observed Band</b>	50-55kD
<b>Calculated Molecular Weight</b>	37,30kD
<b>Cell Pathway</b>	Cell membrane ; Single-pass type I membrane protein;Isoform IIB1;Cytoplasm, cytoskeleton.[Note: Binds the cytoskeleton and is not localized in endocytotic pits];Isoform IIB3.Secreted.[Note: Released as a soluble molecule].
<b>Tissue Specificity</b>	Widely expressed by cells of hemopoietic origin. The isoforms are differentially expressed. Isoform IIB1 is preferentially expressed by cells of the lymphoid lineage, isoform IIB2 by cells of the myeloid lineage, and isoform IIB3 is released by macrophages and is present in the serum. Isoform IIB1' is expressed in myeloid and lymphoid cell lines, in normal spleen cells, and in resting or LPS-activated B-cells but is not detected in mesenteric lymph node cells.
<b>Function</b>	Receptor for the Fc region of complexed immunoglobulins gamma. Low affinity receptor. Involved in a variety of effector and regulatory functions such as phagocytosis of antigen-antibody complexes from the circulation and modulation of antibody production by B-cells. Isoform IIB1 and isoform IIB1' form caps but fail to mediate endocytosis or phagocytosis. Isoform IIB2 can mediate the endocytosis of soluble immune complexes via clathrin-coated pits. Isoform IIB1 and isoform IIB2 can down-regulate B-cell, T-cell, and mast cell activation when





coaggregated to B-cell receptors for AG (BCR), T-cell receptors for AG (TCR), and Fc receptors, respectively.

### Background

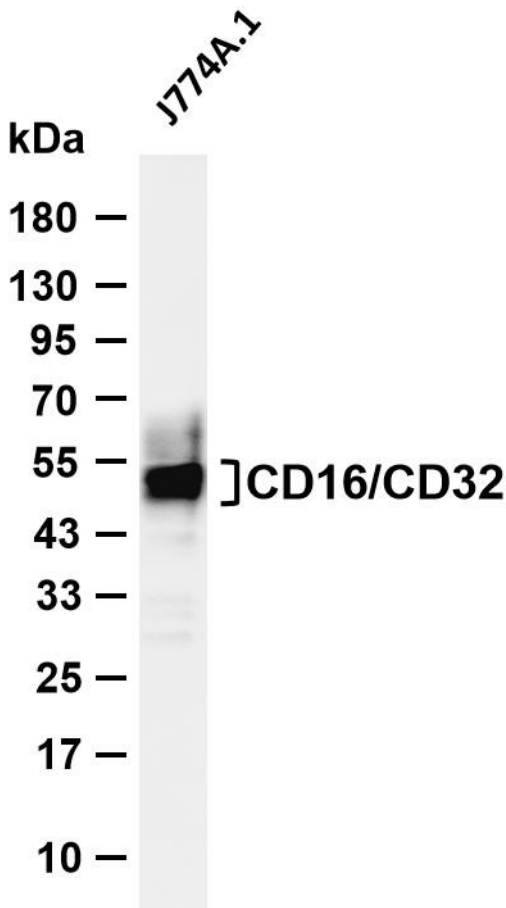
Enables IgG binding activity. Involved in several processes, including Fc receptor-mediated immune complex endocytosis; nervous system development; and regulation of response to endoplasmic reticulum stress. Acts upstream of or within several processes, including antigen processing and presentation of exogenous peptide antigen via MHC class II; negative regulation of immune effector process; and regulation of phagocytosis. Located in cell body; dendritic spine; and external side of plasma membrane. Is expressed in several structures, including adipose tissue; bone; liver; lung; and spleen. Used to study malaria and systemic lupus erythematosus. Human ortholog(s) of this gene implicated in several diseases, including autoimmune disease (multiple); dengue disease (multiple); hematologic cancer (multiple); leukopenia (multiple); and malaria (multiple). Orthologous to several human genes including FCGR2A (Fc gamma receptor IIa) and FCGR2B (Fc gamma receptor IIb). [provided by Alliance of Genome Resources, Jul 2025]

### matters needing attention

Avoid repeated freezing and thawing!

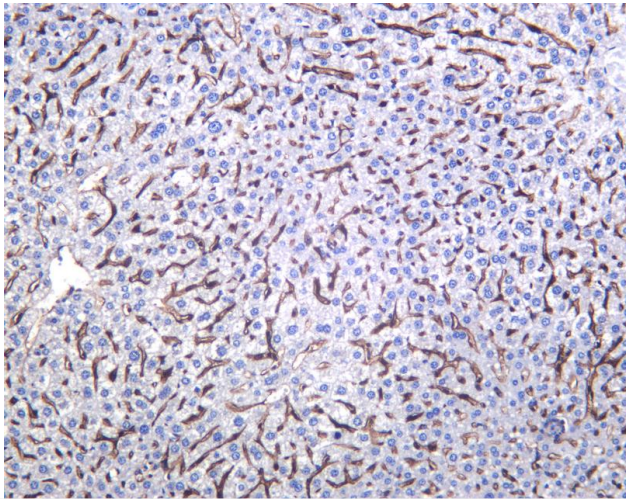
### Usage suggestions

This product can be used in immunological reaction related experiments. For more information, please consult technical personnel.



Various whole cell lysates were separated by 4-20% SDS-PAGE, and the membrane was blotted with anti-CD16/CD32 antibody. The HRP-conjugated Goat anti-Rabbit IgG (H + L) antibody was used to detect the antibody. Lane 1: J774A.1 Predicted band size: 37,30kDa Observed band size: 50-55kDa





Mouse liver was stained with anti-CD16/CD32 Rabbit antibody

## 杭州臻优品生物科技有限公司

### 热销产品:

蛋白、一抗、抗体对、ELISA试剂盒、生化试剂盒  
CCK8试剂盒、QPCR检测试剂盒

### 检测服务:

ELISA检测及定制服务 | 生化检测 | PCR、QPCR检测 | WB检测  
ICO-IP检测 | 切片 | 染色 | 免疫组化 | 免疫荧光 | 透射电镜全套  
| 宏基因组、转录组、基因组、蛋白组、代谢组测序



关注官网



关注客服