



# Ly6A/E Rabbit mAb

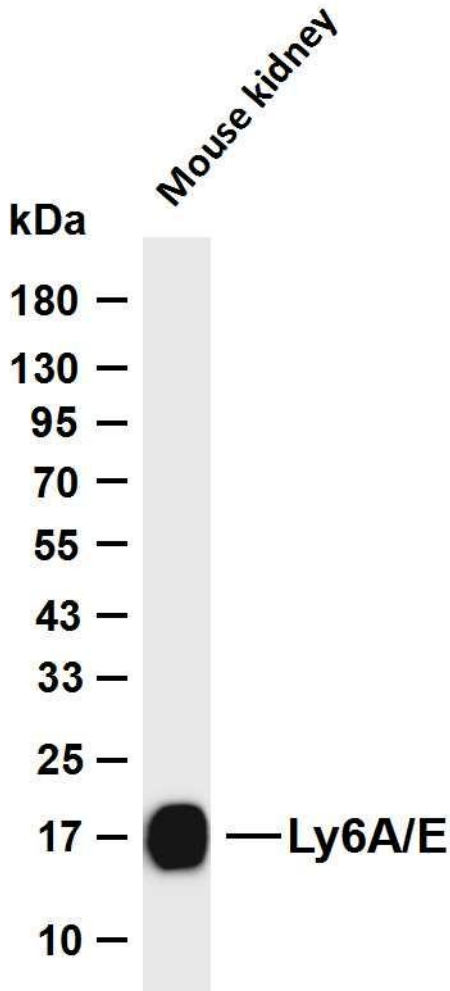
<b>Catalog No</b>	YP-rAb-18481
<b>Isotype</b>	IgG
<b>Reactivity</b>	Mouse
<b>Applications</b>	WB,IF,ELISA
<b>Gene Name</b>	Ly6a Ly6
<b>Protein Name</b>	Lymphocyte antigen 6A-2/6E-1
<b>Purification Process</b>	Protein A
<b>Specificity</b>	Endogenous
<b>Formulation</b>	PBS, 50% glycerol, 0.05% Proclin 300, 0.05%BSA
<b>Source</b>	Monoclonal, Rabbit,IgG
<b>Dilution</b>	WB 1:2000-1:10000; IF 1:200-1:1000; ELISA 1:5000-1:20000;
<b>Concentration</b>	0.5 mg/ml
<b>Purity</b>	≥90%
<b>Storage Stability</b>	-15° C to -25° C/1 year(Do not lower than -25° C)
<b>Synonyms</b>	Ly-6A.2/Ly-6E.1 ; Stem cell antigen 1 ; SCA-1 ; T-cell-activating protein ; TAP
<b>Observed Band</b>	17kD
<b>Calculated Molecular Weight</b>	14kD
<b>Cell Pathway</b>	Cell membrane ; Lipid-anchor, GPI-anchor
<b>Tissue Specificity</b>	Widely expressed.
<b>Function</b>	T-cell activation.
<b>Background</b>	Predicted to enable acetylcholine receptor binding activity and acetylcholine receptor inhibitor activity. Acts upstream of or within response to bacterium. Located in external side of plasma membrane. Is expressed in several structures, including alimentary system; bone marrow; extraembryonic component; metanephros; and uterus. Used to study osteoporosis. [provided by Alliance of Genome Resources, Jul 2025]
<b>matters needing attention</b>	Avoid repeated freezing and thawing!





### Usage suggestions

This product can be used in immunological reaction related experiments. For more information, please consult technical personnel.



Various whole cell lysates were separated by 4-20% SDS-PAGE, and the membrane was blotted with anti-Ly6A/E antibody. The HRP-conjugated Goat anti-Rabbit IgG (H + L) antibody was used to detect the antibody. Lane 1: Mouse kidney Predicted band size: 14kDa Observed band size: 17kDa

